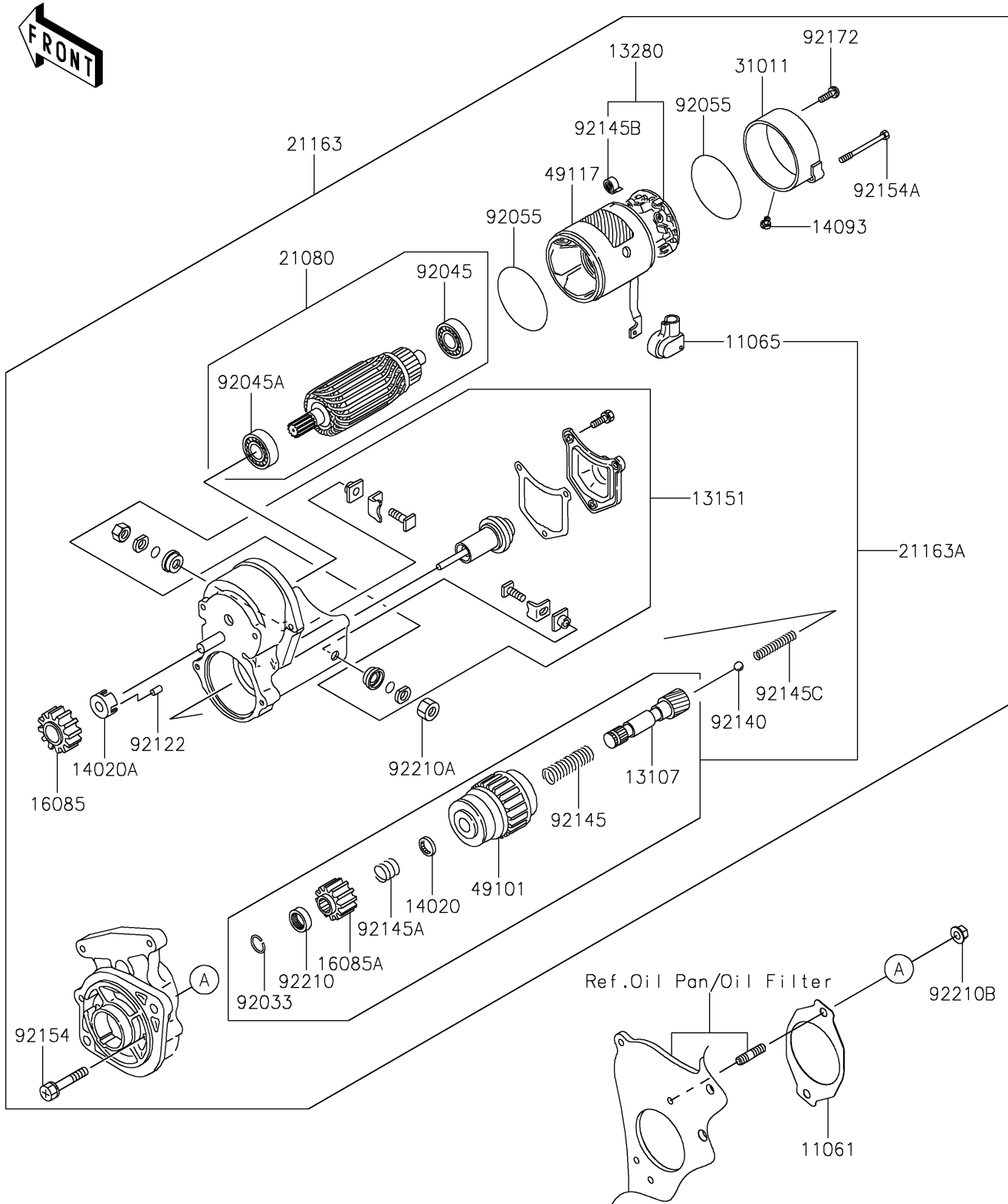


2021 MULE PRO-DX™ EPS DIESEL PARTS DIAGRAM

Starter Motor

E1840



2021 MULE PRO-DX™ EPS DIESEL PARTS LIST

Starter Motor

| ITEM NAME | PART NUMBER | QUANTITY |
|----------------------------------|-------------|----------|
| GASKET,STARTER (Ref # 11061) | 11061-1195 | 1 |
| CAP (Ref # 11065) | 11065-0939 | 1 |
| SHAFT (Ref # 13107) | 13107-0841 | 1 |
| SWITCH-COMP,MAGNET (Ref # 13151) | 13151-0573 | 1 |
| HOLDER (Ref # 13280) | 13280-0863 | 1 |
| RETAINER (Ref # 14020) | 14020-0020 | 1 |
| RETAINER (Ref # 14020A) | 14020-0021 | 1 |
| COVER (Ref # 14093) | 14093-0449 | 1 |
| GEAR,PINION (Ref # 16085) | 16085-0649 | 1 |
| GEAR,PINION (Ref # 16085A) | 16085-0652 | 1 |
| ARMATURE (Ref # 21080) | 21080-0010 | 1 |
| STARTER-ELECTRIC (Ref # 21163) | 21163-0752 | 1 |
| STARTER-ELECTRIC (Ref # 21163A) | 21163-0753 | 1 |
| FRAME (Ref # 31011) | 31011-0029 | 1 |
| CLUTCH,STARTER (Ref # 49101) | 49101-0002 | 1 |
| YOKE (Ref # 49117) | 49117-0593 | 1 |
| RING-SNAP (Ref # 92033) | 92033-0775 | 1 |
| BEARING-BALL (Ref # 92045) | 92045-0808 | 1 |
| BEARING-BALL (Ref # 92045A) | 92045-0809 | 1 |
| RING-O (Ref # 92055) | 92055-0863 | 2 |
| ROLLER (Ref # 92122) | 92122-0048 | 5 |
| BALL (Ref # 92140) | 92140-0017 | 1 |
| SPRING (Ref # 92145) | 92145-1713 | 1 |
| SPRING (Ref # 92145A) | 92145-1714 | 1 |
| SPRING (Ref # 92145B) | 92145-1715 | 4 |
| SPRING (Ref # 92145C) | 92145-1716 | 1 |
| BOLT (Ref # 92154) | 92154-2072 | 2 |
| BOLT (Ref # 92154A) | 92154-2073 | 2 |
| SCREW (Ref # 92172) | 92172-0988 | 2 |

2021 MULE PRO-DX™ EPS DIESEL PARTS LIST

Starter Motor

| ITEM NAME | PART NUMBER | QUANTITY |
|------------------------|-------------|----------|
| NUT (Ref # 92210) | 92210-1470 | 1 |
| NUT (Ref # 92210A) | 92210-1472 | 1 |
| NUT,8MM (Ref # 92210B) | 92210-1473 | 2 |