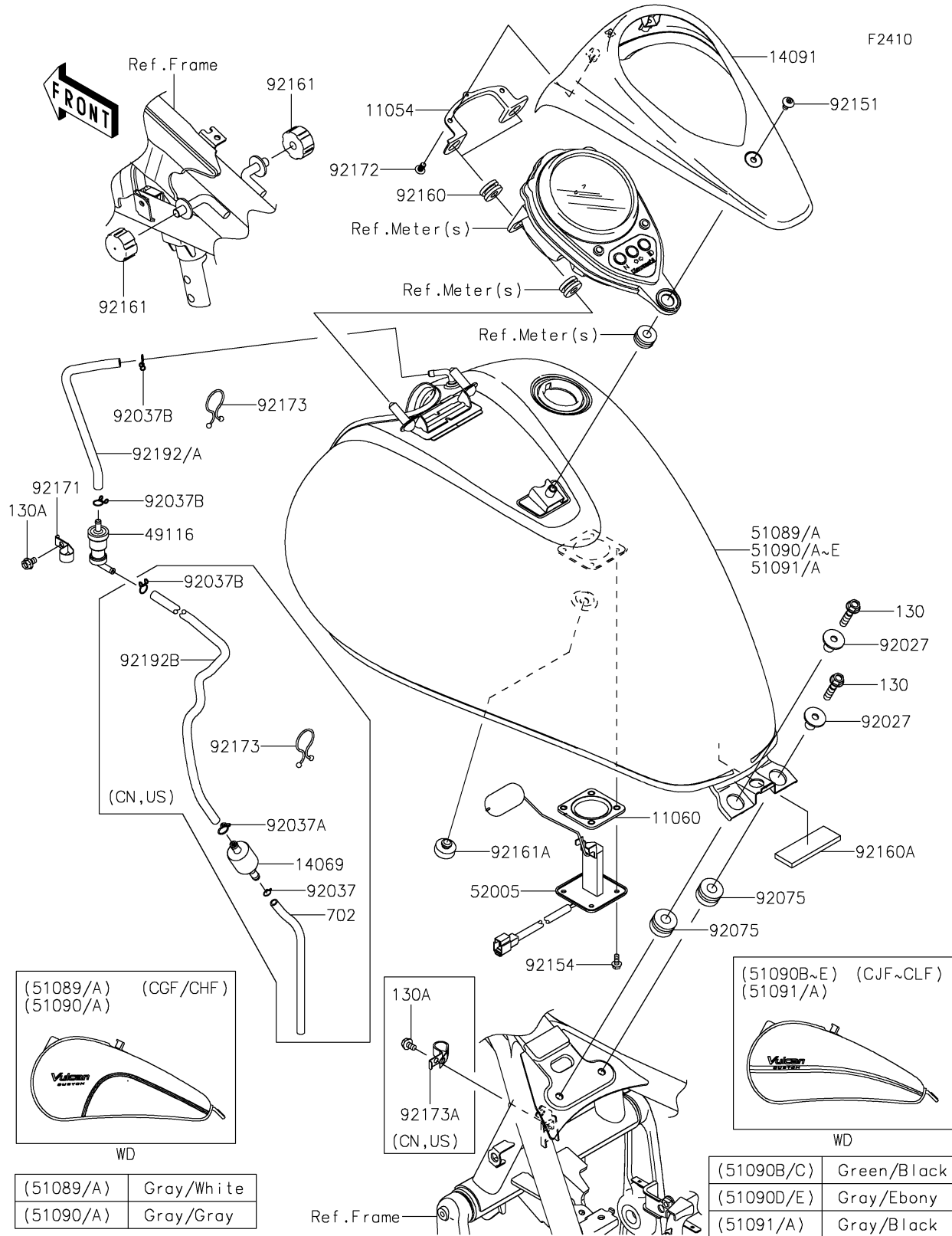


2019 VULCAN® 900 CUSTOM PARTS DIAGRAM

Fuel Tank



2019 VULCAN® 900 CUSTOM PARTS LIST

Fuel Tank

| ITEM NAME | PART NUMBER | QUANTITY |
|--|----------------|----------|
| BRACKET,METER,FR (Ref # 11054) | 11054-0034 | 1 |
| GASKET,FUEL GAUGE (Ref # 11060) | 11060-1952 | 1 |
| BREATHER,FUEL TANK (Ref # 14069) | 14069-1004 | 1 |
| COVER,METER,EBONY (Ref # 14091) | 14091-1730-H8 | 1 |
| VALVE-ASSY,CHECK (Ref # 49116) | 49116-0014 | 1 |
| TANK-COMP-FUEL,P.S.GRAY+EBY (Ref # 51090D) | 51090-5394-60W | 1 |
| TANK-COMP-FUEL,P.S.GRAY+EBY (Ref # 51090E) | 51090-5395-60W | 1 |
| GAUGE,FUEL (Ref # 52005) | 52005-0718 | 1 |
| COLLAR,L=19.3 (Ref # 92027) | 92027-1780 | 2 |
| CLAMP,TUBE (Ref # 92037) | 92037-010 | 1 |
| CLAMP,HOSE (Ref # 92037A) | 92037-1104 | 1 |
| CLAMP,TUBE (Ref # 92037B) | 92037-147 | 2 |
| CLAMP,TUBE (Ref # 92037B) | 92037-147 | 3 |
| DAMPER (Ref # 92075) | 92075-1736 | 2 |
| BOLT-FLANGED,8X30 (Ref # 130) | 130BA0830 | 2 |
| BOLT-FLANGED,6X10 (Ref # 130A) | 130BB0610 | 1 |
| BOLT-FLANGED,6X10 (Ref # 130A) | 130BB0610 | 2 |
| TUBE-RUBBER,6X200 (Ref # 702) | 702A06200 | 1 |
| BOLT,SOCKET,6X12 (Ref # 92151) | 92151-1940 | 1 |
| BOLT,FLANGED,5X12 (Ref # 92154) | 92154-1856 | 4 |
| DAMPER (Ref # 92160) | 92160-1162 | 2 |
| DAMPER (Ref # 92160A) | 92160-1323 | 1 |
| DAMPER,FUEL TANK (Ref # 92161) | 92161-0293 | 2 |
| DAMPER (Ref # 92161A) | 92161-1065 | 1 |
| CLAMP (Ref # 92171) | 92171-0595 | 1 |
| SCREW,TAPPING,5X14 (Ref # 92172) | 92172-0006 | 2 |
| CLAMP (Ref # 92173) | 92173-0848 | 1 |
| CLAMP (Ref # 92173) | 92173-0848 | 2 |
| CLAMP (Ref # 92173A) | 92173-0925 | 1 |