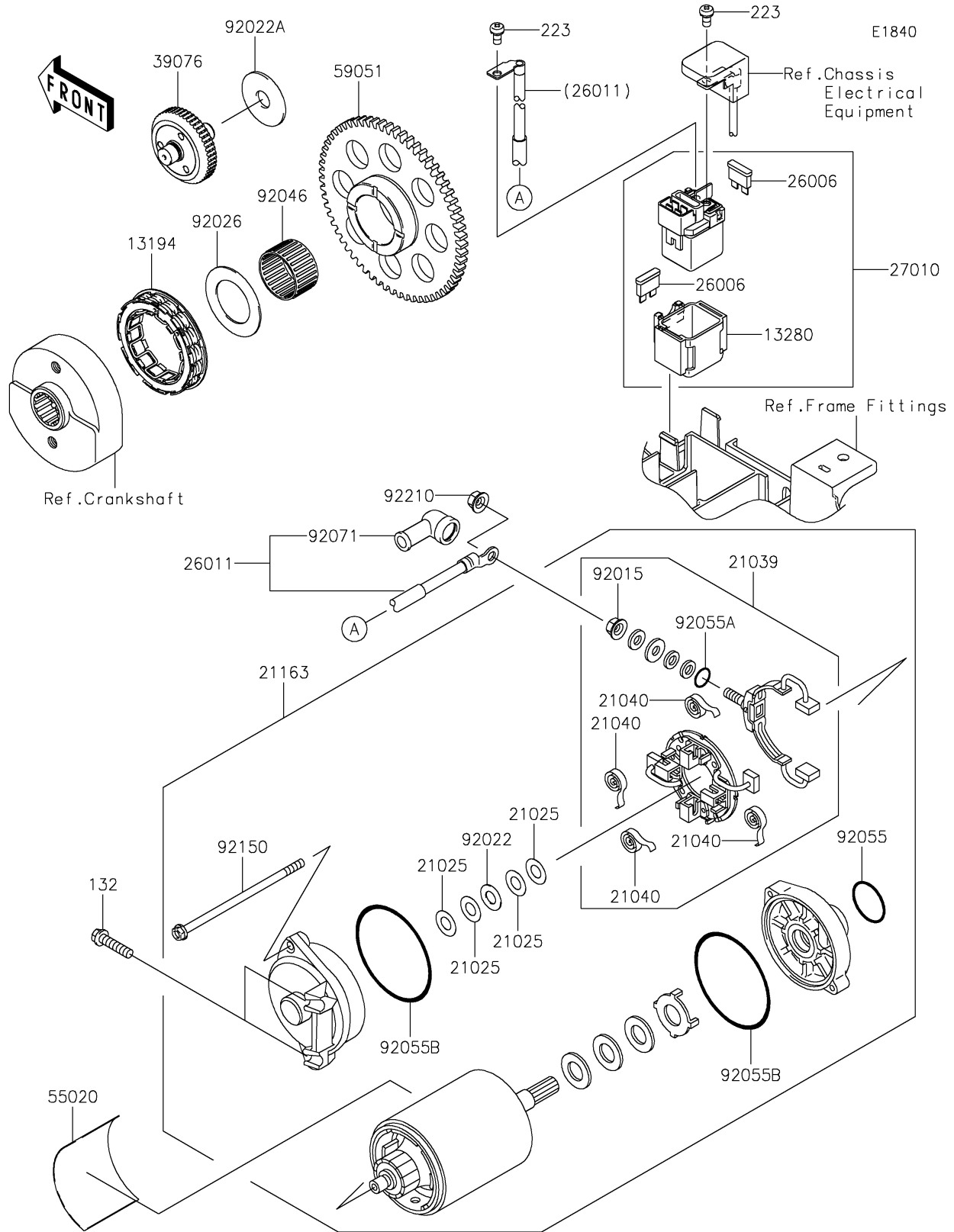


# 2016 Vulcan 900 Classic LT PARTS DIAGRAM

## Starter Motor



## 2016 Vulcan 900 Classic LT PARTS LIST

### Starter Motor

ITEM NAME	PART NUMBER	QUANTITY
CLUTCH-ONEWAY (Ref # 13194)	13194-0009	1
BOLT-FLANGED-SMALL,6X25 (Ref # 132)	132BA0625	2
HOLDER,MAGNETIC SWITCH (Ref # 13280)	13280-0822	1
WASHER,9.1X18X0.2 (Ref # 21025)	21025-011	AR
BRUSH,CARBON (Ref # 21039)	21039-1060	1
SPRING-BRUSH (Ref # 21040)	21040-1055	4
STARTER-ELECTRIC (Ref # 21163)	21163-0066	1
SCREW-PAN-WS-CROS,5X10 (Ref # 223)	223AA0510	2
FUSE,BLADE,30A,GREEN (Ref # 26006)	26006-1006	2
WIRE-LEAD,STARTER MOTOR (Ref # 26011)	26011-0126	1
SWITCH,MAGNETIC (Ref # 27010)	27010-0793	1
LIMITER (Ref # 39076)	39076-0008	1
GUARD,STARTER MOTER (Ref # 55020)	55020-1589	1
GEAR-SPUR,63T (Ref # 59051)	59051-0060	1
NUT,STARTER MOTOR (Ref # 92015)	92015-1476	1
WASHER,9.1X18X0.8 (Ref # 92022)	92022-1132	1
WASHER,12.3X38X2.0 (Ref # 92022A)	92022-1664	1
SPACER,31X49.5X1.2 (Ref # 92026)	92026-1490	1
BEARING-NEEDLE,K30X35X20 (Ref # 92046)	92046-1171	1
RING-O (Ref # 92055)	92055-1276	1
RING-O,4.5X2.0 (Ref # 92055A)	92055-1370	1
RING-O,STARTER MOTOR (Ref # 92055B)	92055-1381	2
GROMMET (Ref # 92071)	92071-0024	1
BOLT,STARTER MOTOR (Ref # 92150)	92150-1572	2
NUT,6MM (Ref # 92210)	92210-0188	1