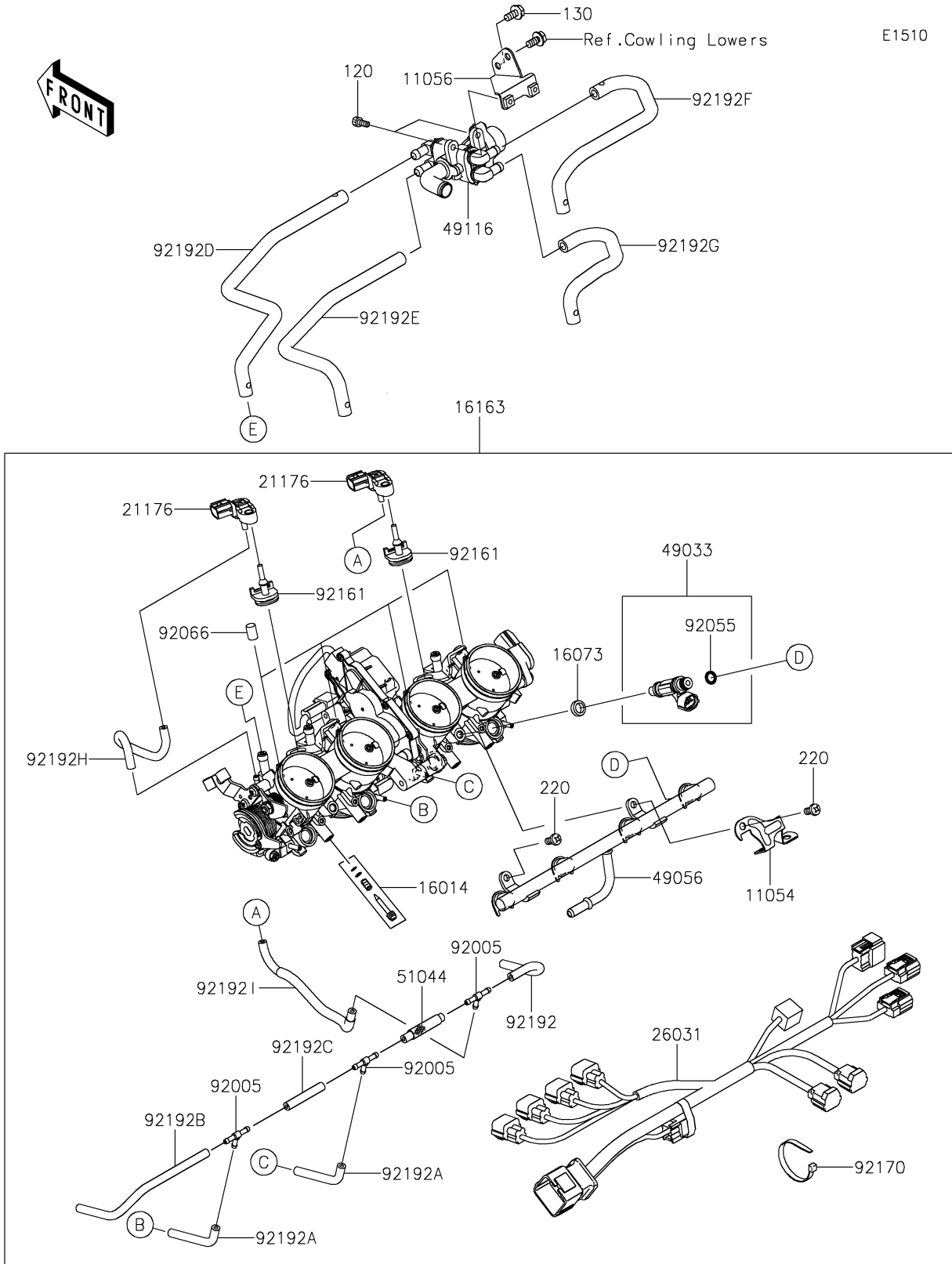


2019 NINJA® ZX™-14R ABS PARTS DIAGRAM

Throttle



E1510

2019 NINJA® ZX™-14R ABS PARTS LIST

Throttle

| ITEM NAME | PART NUMBER | QUANTITY |
|---------------------------------------|-------------|----------|
| BRACKET (Ref # 11054) | 11054-0554 | 1 |
| BRACKET,ISCV (Ref # 11056) | 11056-1175 | 1 |
| BOLT-SOCKET,5X12 (Ref # 120) | 120CA0512 | 2 |
| BOLT-FLANGED,6X12 (Ref # 130) | 130BA0612 | 1 |
| SCREW-PILOT AIR (Ref # 16014) | 16014-0005 | 4 |
| INSULATOR,INJECTER (Ref # 16073) | 16073-1123 | 4 |
| THROTTLE-ASSY (Ref # 16163) | 16163-0780 | 1 |
| SENSOR,PRESSURE (Ref # 21176) | 21176-0111 | 2 |
| SCREW-PAN-CROS,6X12 (Ref # 220) | 220AA0612 | 2 |
| HARNESS (Ref # 26031) | 26031-1425 | 1 |
| NOZZLE-INJECTION (Ref # 49033) | 49033-0557 | 4 |
| PIPE-INJECTION (Ref # 49056) | 49056-0017 | 1 |
| VALVE-ASSY,ISC (Ref # 49116) | 49116-0706 | 1 |
| TUBE-ASSY (Ref # 51044) | 51044-0727 | 1 |
| FITTING (Ref # 92005) | 92005-1380 | 3 |
| RING-O,INJECTION NOZZLE (Ref # 92055) | 92055-1622 | 4 |
| PLUG,FITTING (Ref # 92066) | 92066-1549 | 4 |
| DAMPER (Ref # 92161) | 92161-0673 | 2 |
| CLAMP (Ref # 92170) | 92170-3749 | 6 |
| TUBE,3.2X7.4X115 (Ref # 92192) | 92192-0131 | 1 |
| TUBE,3.2X7.4X60 (Ref # 92192A) | 92192-0576 | 2 |
| TUBE,3.2X7.4X175 (Ref # 92192B) | 92192-0577 | 1 |
| TUBE,3.2X7.4X50 (Ref # 92192C) | 92192-0578 | 1 |
| TUBE,THROTTLE #1-ISCV (Ref # 92192D) | 92192-1009 | 1 |
| TUBE,THROTTLE #2-ISCV (Ref # 92192E) | 92192-1010 | 1 |
| TUBE,THROTTLE #3-ISCV (Ref # 92192F) | 92192-1011 | 1 |
| TUBE,THROTTLE #4-ISCV (Ref # 92192G) | 92192-1012 | 1 |
| TUBE,BODY LH-SENSOR (Ref # 92192H) | 92192-1088 | 1 |
| TUBE,FITTING-SENSOR (Ref # 92192I) | 92192-1089 | 1 |