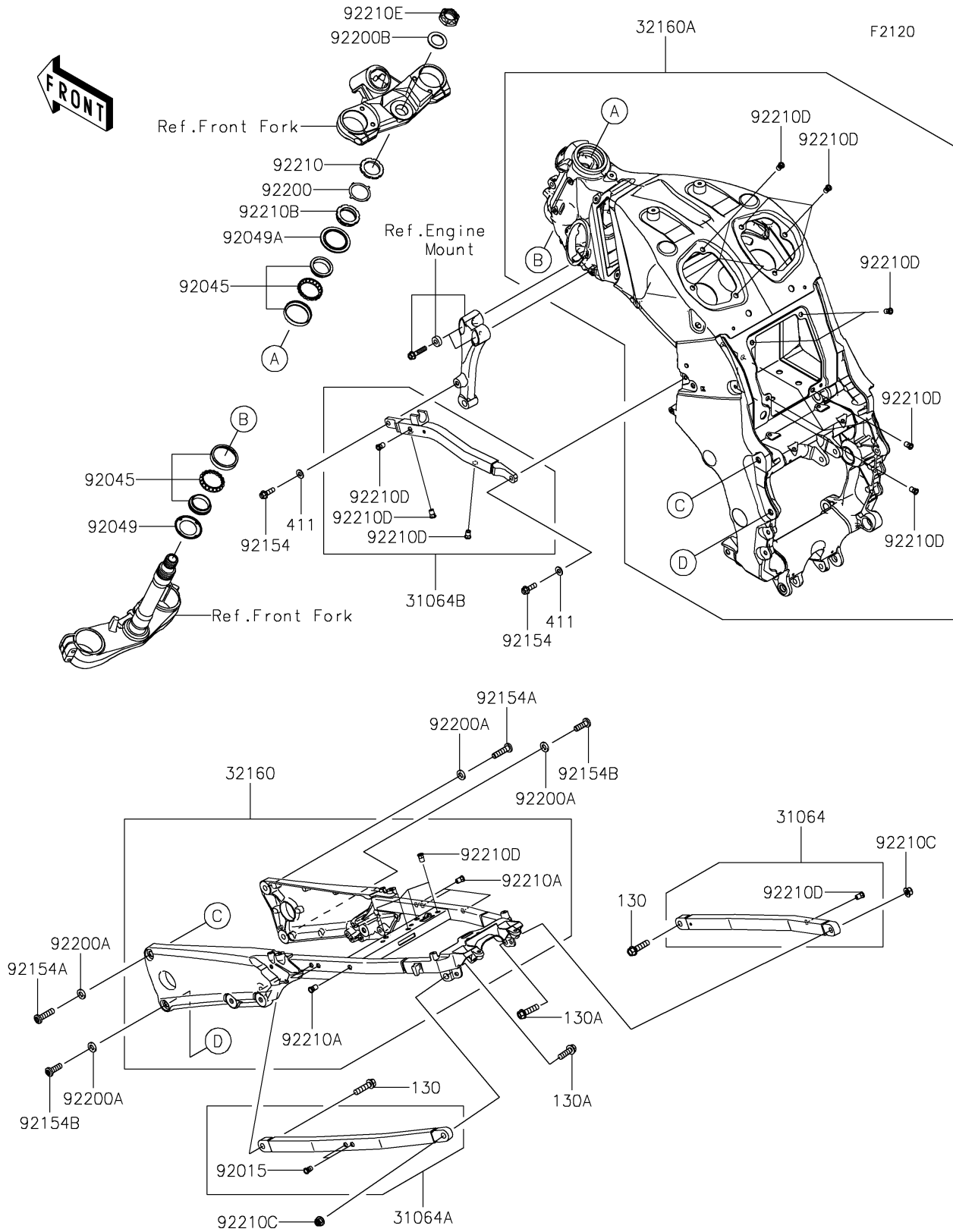


2018 NINJA® ZX™ -14R ABS SE PARTS DIAGRAM

Frame



2018 NINJA® ZX™ -14R ABS SE PARTS LIST

Frame

ITEM NAME	PART NUMBER	QUANTITY
BOLT-FLANGED,10X40 (Ref # 130)	130BA1040	2
BOLT-FLANGED,10X35 (Ref # 130A)	130BB1035	2
PIPE-COMP,RR,RH,F.S.BLACK (Ref # 31064)	31064-0045-18R	1
PIPE-COMP,RR,LH,F.S.BLACK (Ref # 31064A)	31064-0065-18R	1
PIPE-COMP,SUB FRAME,LH (Ref # 31064B)	31064-0099	1
FRAME-COMP,RR,F.S.BLACK (Ref # 32160)	32160-0700-18R	1
FRAME-COMP,FR,F.S.BLACK (Ref # 32160A)	32160-0820-18R	1
WASHER-PLAIN,8MM (Ref # 411)	411AA0800	2
NUT,POP,6MM,L=15 (Ref # 92015)	92015-1791	2
BEARING-BALL,SF07A17PX1V1 (Ref # 92045)	92045-1384	2
SEAL-OIL,DS35X55X4 (Ref # 92049)	92049-0022	1
SEAL-OIL,43X55.5X8.6 (Ref # 92049A)	92049-0742	1
BOLT,FLANGED,8X25 (Ref # 92154)	92154-1859	2
BOLT,SOCKET,10X40 (Ref # 92154A)	92154-1860	2
BOLT,SOCKET,10X30 (Ref # 92154B)	92154-1861	2
WASHER (Ref # 92200)	92200-0281	1
WASHER,11X20X3 (Ref # 92200A)	92200-0805	4
WASHER,25.5X39X2.3 (Ref # 92200B)	92200-1783	1
NUT,35MM (Ref # 92210)	92210-0095	1
NUT,POP,6MM,L=16.5 (Ref # 92210A)	92210-0324	6
NUT,35MM (Ref # 92210B)	92210-0823	1
NUT,LOCK,FLANGED,10MM (Ref # 92210C)	92210-1139	2
NUT,POP,6MM,L=15 (Ref # 92210D)	92210-1397	20
NUT,TOP,25MM (Ref # 92210E)	92210-1510	1