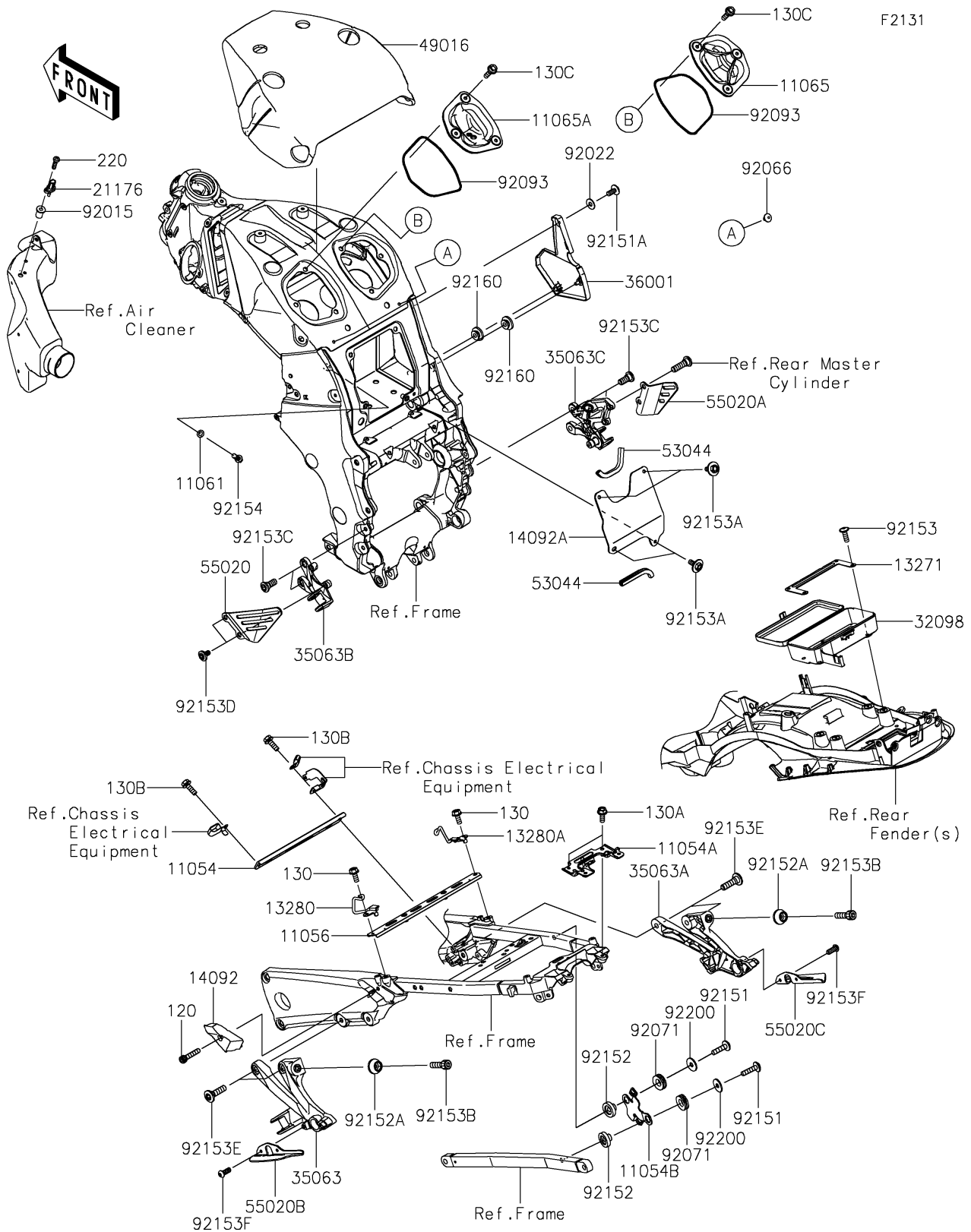


2018 NINJA® ZX™ -14R ABS SE PARTS DIAGRAM

Frame Fittings



2018 NINJA® ZX™ -14R ABS SE PARTS LIST

Frame Fittings

ITEM NAME	PART NUMBER	QUANTITY
BRACKET,RR FENDER,FR (Ref # 11054)	11054-0225	1
BRACKET,REAR FENDER&TAIL COVER (Ref # 11054A)	11054-0694	1
BRACKET,REGULATOR (Ref # 11054B)	11054-0718	1
BRACKET,FUEL TANK,RR (Ref # 11056)	11056-2121	1
GASKET (Ref # 11061)	11061-0107	1
CAP,AIR CLEANER,RH (Ref # 11065)	11065-0223	1
CAP,AIR CLEANER,LH (Ref # 11065A)	11065-0763	1
PLATE,TOOL CASE (Ref # 13271)	13271-0779	1
HOLDER,HELMET,LH (Ref # 13280)	13280-0753	1
HOLDER,HELMET,RH (Ref # 13280A)	13280-0754	1
COVER,F.BLACK (Ref # 14092)	14092-0903-6Z	1
COVER,BATTERY (Ref # 14092A)	14092-0981	1
SENSOR,AIR TEMPERATURE (Ref # 21176)	21176-0048	1
CASE-TOOL (Ref # 32098)	32098-0058	1
STAY,RR,LH,F.S.BLACK (Ref # 35063)	35063-0782-18R	1
STAY,RR,RH,F.S.BLACK (Ref # 35063A)	35063-0783-18R	1
STAY,FR,LH,F.S.BLACK (Ref # 35063B)	35063-1337-18R	1
STAY,FR,RH,F.S.BLACK (Ref # 35063C)	35063-1338-18R	1
COVER-SIDE,BATTERY,RH,BLACK (Ref # 36001)	36001-0080-18T	1
COVER-SEAL,FRAME (Ref # 49016)	49016-0578	1
TRIM,L=100 (Ref # 53044)	53044-1200	2
GUARD,FRONT STEP,LH (Ref # 55020)	55020-0211	1
GUARD,FRONT STEP,RH (Ref # 55020A)	55020-0212	1
GUARD,RR STEP,LH (Ref # 55020B)	55020-0866	1
GUARD,RR STEP,RH (Ref # 55020C)	55020-0867	1
NUT,WELL,5MM (Ref # 92015)	92015-1757	1
WASHER,6.5X16X1 (Ref # 92022)	92022-1143	1
PLUG (Ref # 92066)	92066-1547	2
GROMMET (Ref # 92071)	92071-1115	2

2018 NINJA® ZX™ -14R ABS SE PARTS LIST

Frame Fittings

ITEM NAME	PART NUMBER	QUANTITY
SEAL,124.4X3.1 (Ref # 92093)	92093-0692	2
BOLT,SOCKET,6X25 (Ref # 92151)	92151-1611	2
BOLT,SOCKET,6X14 (Ref # 92151A)	92151-1654	1
COLLAR (Ref # 92152)	92152-0470	2
COLLAR (Ref # 92152A)	92152-0668	2
BOLT,6X18 (Ref # 92153)	92153-0478	4
BOLT,6X16 (Ref # 92153A)	92153-1423	4
BOLT,SOCKET,10X23 (Ref # 92153B)	92153-1522	2
BOLT,SOCKET,8X20 (Ref # 92153C)	92153-1621	4
BOLT,6MM (Ref # 92153D)	92153-1622	2
BOLT,SOCKET,8X30 (Ref # 92153E)	92153-1630	4
BOLT-SOCKET,6X30 (Ref # 120)	120CB0630	1
BOLT-FLANGED,6X14 (Ref # 130)	130BA0614	2
BOLT-FLANGED,6X16 (Ref # 130A)	130BA0616	2
BOLT-FLANGED,6X18 (Ref # 130B)	130BA0618	2
BOLT-FLANGED,6X22 (Ref # 130C)	130BA0622	6
SCREW-PAN-CROS,5X18 (Ref # 220)	220AB0518	1
BOLT,SOCKET,6X16 (Ref # 92153F)	92153-1785	4
BOLT,FLANGED,6X14 (Ref # 92154)	92154-1864	1
DAMPER (Ref # 92160)	92160-1613	2
WASHER,6.5X20X1.6 (Ref # 92200)	92200-0283	2