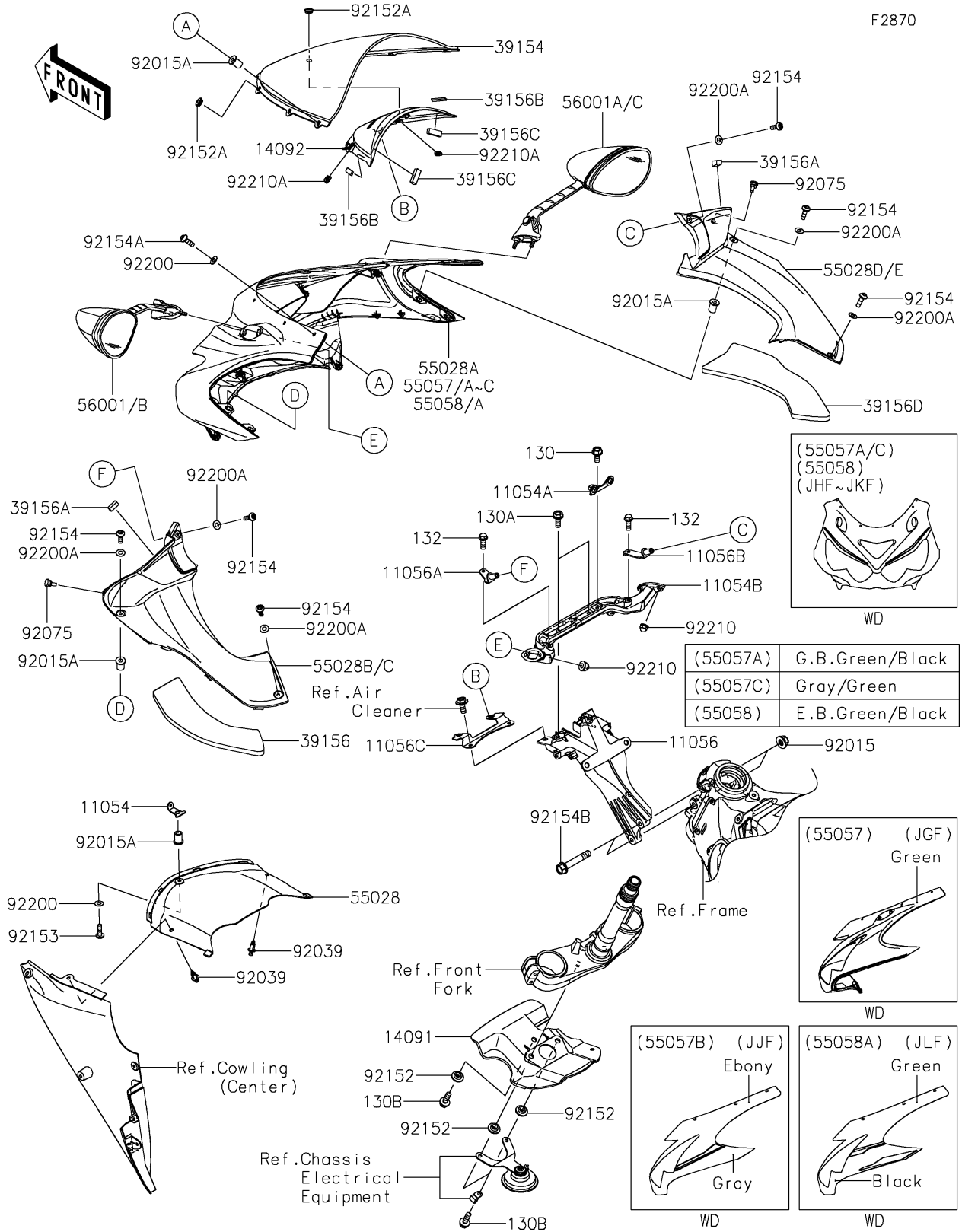
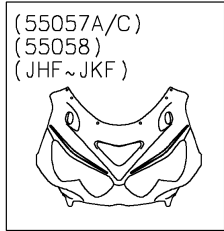


2016 Ninja ZX-14R ABS SE PARTS DIAGRAM

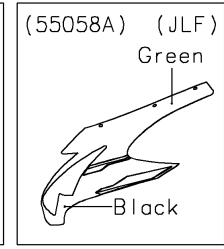
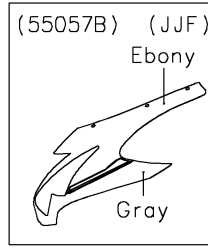
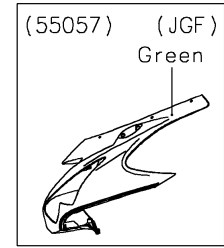
Cowling(Upper)



F2870



(55057A)	G.B.Green/Black
(55057C)	Gray/Green
(55058)	E.B.Green/Black



2016 Ninja ZX-14R ABS SE PARTS LIST

Cowling(Upper)

ITEM NAME	PART NUMBER	QUANTITY
BRACKET,UPP COWLING (Ref # 11054)	11054-0180	1
BRACKET,DOWN SENSOR (Ref # 11054A)	11054-0239	1
BRACKET,MIRROR (Ref # 11054B)	11054-1307	1
BRACKET,METER (Ref # 11056)	11056-1544	1
BRACKET,INNER COWLING,LH (Ref # 11056A)	11056-2211	1
BRACKET,INNER COWLING,RH (Ref # 11056B)	11056-2212	1
BRACKET (Ref # 11056C)	11056-2273	1
COVER,RADIATOR (Ref # 14091)	14091-0624	1
COVER,METER,F.BLACK (Ref # 14092)	14092-0985-6Z	1
WINDSHIELD (Ref # 39154)	39154-0014	1
PAD,INNER COWLING,LH (Ref # 39156)	39156-0777	1
PAD (Ref # 39156A)	39156-0876	2
PAD,8X30X3 (Ref # 39156B)	39156-0930	2
PAD,8X30X10 (Ref # 39156C)	39156-0931	2
PAD,INNER COWLING,RH (Ref # 39156D)	39156-1998	1
COWLING,FR,CNT (Ref # 55028)	55028-0095	1
COWLING,UPP,M.M.C.GRAY (Ref # 55028A)	55028-0438-51B	1
COWLING,INNER,LH,F.BLACK (Ref # 55028C)	55028-0622-6Z	1
COWLING,INNER,RH,F.BLACK (Ref # 55028E)	55028-0623-6Z	1
COWLING,UPP,G.B.GREEN (Ref # 55057)	55057-5073-40R	1
MIRROR-ASSY,LH (Ref # 56001)	56001-0233	1
MIRROR-ASSY,RH (Ref # 56001A)	56001-0234	1
NUT,8MM (Ref # 92015)	92015-1432	2
NUT,WELL,5MM (Ref # 92015A)	92015-1757	7
RIVET (Ref # 92039)	92039-0023	2
DAMPER,6X10X15 (Ref # 92075)	92075-1808	2
COLLAR,6.5X10X5.6 (Ref # 92152)	92152-0445	3
BOLT-FLANGED,6X14 (Ref # 130)	130BA0614	1
BOLT-FLANGED,6X16 (Ref # 130A)	130BA0616	2

2016 Ninja ZX-14R ABS SE PARTS LIST

Cowling(Upper)

ITEM NAME	PART NUMBER	QUANTITY
BOLT-FLANGED,6X18 (Ref # 130B)	130BA0618	3
BOLT-FLANGED-SMALL,6X16 (Ref # 132)	132BA0616	2
COLLAR,5.2X9.9X3.7 (Ref # 92152A)	92152-1690	2
BOLT,SOCKET,5X16 (Ref # 92153)	92153-1244	1
BOLT,SOCKET,5X16 (Ref # 92154)	92154-0026	6
BOLT,SOCKET,5X16 (Ref # 92154A)	92154-0209	6
BOLT,FLANGED,8X48 (Ref # 92154B)	92154-1296	2
WASHER,NYLON,5.3X11.5X0.5 (Ref # 92200)	92200-0006	7
WASHER,NYLON,5.3X11.5X0.5 (Ref # 92200A)	92200-1480	6
NUT,CAP,6MM (Ref # 92210)	92210-0322	4
NUT (Ref # 92210A)	92210-0571	2