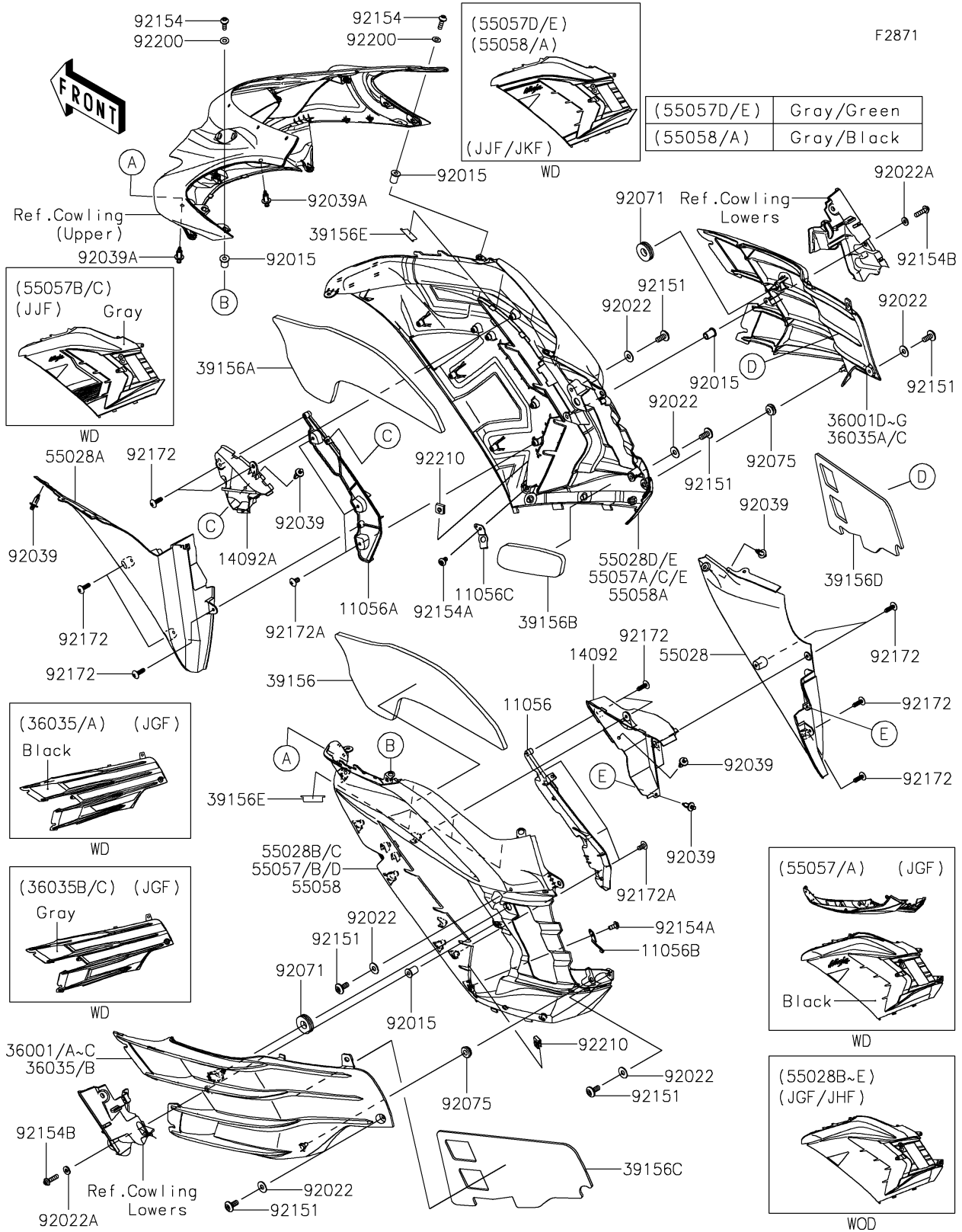


2018 NINJA® ZX™-14R ABS SE PARTS DIAGRAM

Cowling(Center)(JGF-JKF)



2018 NINJA® ZX™ -14R ABS SE PARTS LIST

Cowling(Center)(JGF-JKF)

| ITEM NAME | PART NUMBER | QUANTITY |
|---|----------------|----------|
| BRACKET,SIDE COWLING,LH (Ref # 11056) | 11056-1343 | 1 |
| BRACKET,SIDE COWLING,RH (Ref # 11056A) | 11056-1344 | 1 |
| BRACKET,LWR COWLING,LH (Ref # 11056B) | 11056-1366 | 1 |
| BRACKET,LWR COWLING,RH (Ref # 11056C) | 11056-1367 | 1 |
| COVER,SIDE COWLING,LH (Ref # 14092) | 14092-0861 | 1 |
| COVER,SIDE COWLING,RH (Ref # 14092A) | 14092-0986 | 1 |
| COVER-SIDE,LH,M.C.GRAY (Ref # 36001B) | 36001-0568-51A | 1 |
| COVER-SIDE,LH,C.ORANGE+EBY (Ref # 36001C) | 36001-0568-60V | 1 |
| COVER-SIDE,RH,M.C.GRAY (Ref # 36001F) | 36001-0569-51A | 1 |
| COVER-SIDE,RH,C.ORANGE+EBY (Ref # 36001G) | 36001-0569-60V | 1 |
| PAD,SIDE COWLING,LH (Ref # 39156) | 39156-0783 | 1 |
| PAD,SIDE COWLING,RH (Ref # 39156A) | 39156-0784 | 1 |
| PAD,SIDE COWLING,RH,LWR (Ref # 39156B) | 39156-0785 | 1 |
| PAD,SIDE COVER,LH (Ref # 39156C) | 39156-0877 | 1 |
| PAD,SIDE COVER,RH (Ref # 39156D) | 39156-0878 | 1 |
| PAD (Ref # 39156E) | 39156-0911 | 6 |
| COWLING,FR,LH (Ref # 55028) | 55028-0383 | 1 |
| COWLING,FR,RH (Ref # 55028A) | 55028-0457 | 1 |
| COWLING,SIDE,LH,P.S.GRAY (Ref # 55057B) | 55057-5440-36S | 1 |
| COWLING,SIDE,RH,P.S.GRAY (Ref # 55057C) | 55057-5441-36S | 1 |
| COWLING,SIDE,LH,M.C.GRAY+GRN (Ref # 55057D) | 55057-5443-60T | 1 |
| COWLING,SIDE,RH,M.C.GRAY+GRN (Ref # 55057E) | 55057-5444-60T | 1 |
| NUT,WELL,5MM (Ref # 92015) | 92015-1757 | 4 |
| WASHER,6.5X16X1 (Ref # 92022) | 92022-1143 | 6 |
| WASHER,NYLON,5.3X11.5X1.5 (Ref # 92022A) | 92022-1521 | 2 |
| RIVET (Ref # 92039) | 92039-0051 | 5 |
| RIVET (Ref # 92039A) | 92039-0060 | 2 |
| GROMMET (Ref # 92071) | 92071-056 | 2 |
| DAMPER,6X16X7 (Ref # 92075) | 92075-1011 | 2 |

2018 NINJA® ZX™ -14R ABS SE PARTS LIST

Cowling(Center)(JGF-JKF)

| ITEM NAME | PART NUMBER | QUANTITY |
|---|-------------|----------|
| BOLT,SOCKET,6X14 (Ref # 92151) | 92151-1654 | 6 |
| BOLT,SOCKET,5X16 (Ref # 92154) | 92154-0209 | 2 |
| BOLT,SOCKET,5X10 (Ref # 92154A) | 92154-0211 | 2 |
| BOLT,SOCKET,5X20 (Ref # 92154B) | 92154-0829 | 2 |
| SCREW,TAPPING,5X16 (Ref # 92172) | 92172-0238 | 11 |
| SCREW,TAPPING,5X10 (Ref # 92172A) | 92172-0262 | 6 |
| WASHER,NYLON,5.3X11.5X0.5 (Ref # 92200) | 92200-0006 | 2 |
| NUT (Ref # 92210) | 92210-0571 | 2 |