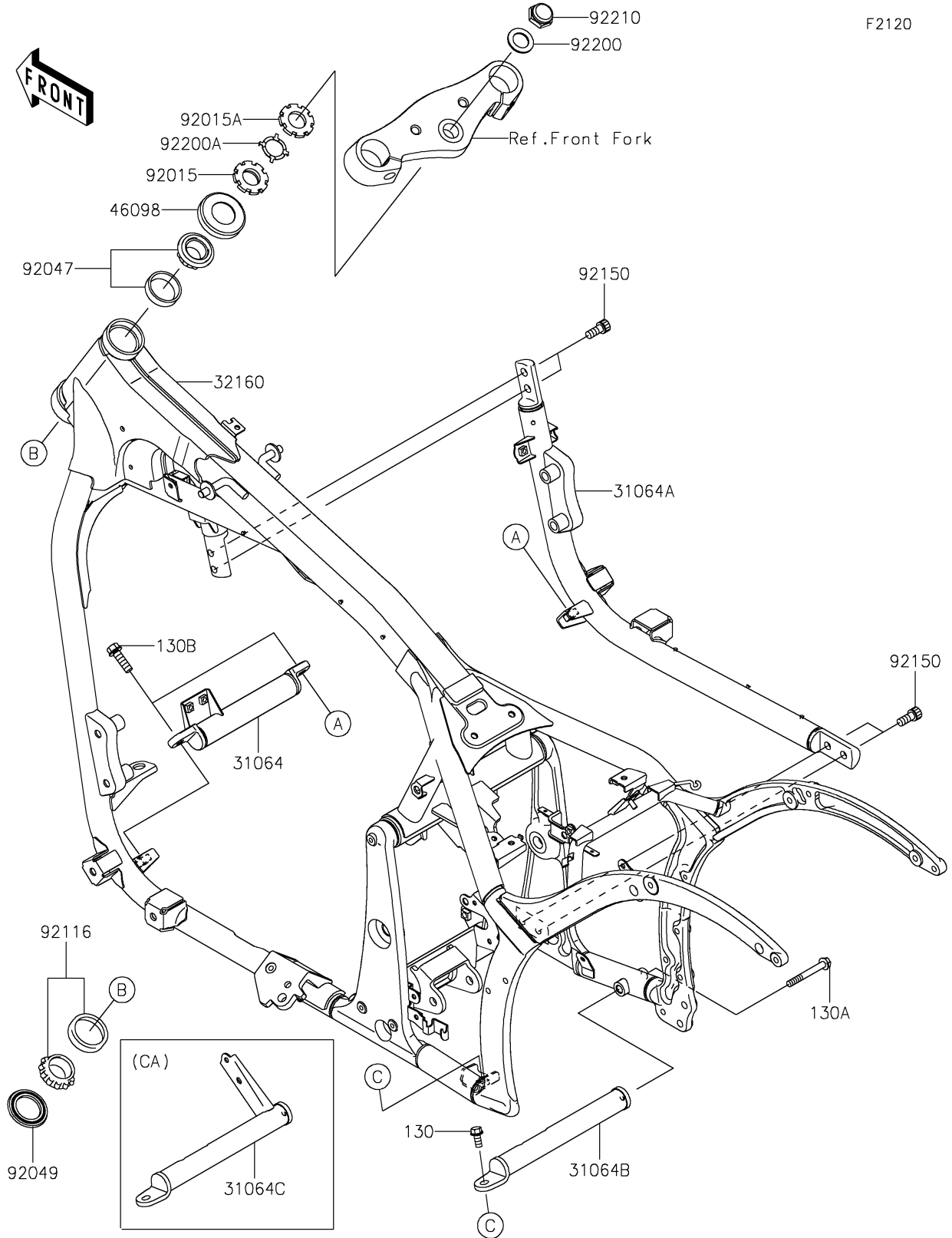


2020 VULCAN® 900 CLASSIC PARTS DIAGRAM

Frame



F2120

2020 VULCAN® 900 CLASSIC PARTS LIST

Frame

| ITEM NAME | PART NUMBER | QUANTITY |
|---|----------------|----------|
| BOLT-FLANGED,8X18 (Ref # 130) | 130BB0818 | 1 |
| BOLT-FLANGED,8X65 (Ref # 130A) | 130BB0865 | 1 |
| BOLT-FLANGED,10X25 (Ref # 130B) | 130BB1025 | 2 |
| PIPE-COMP,FRONT CROSS,F.S.BLK (Ref # 31064) | 31064-0047-18R | 1 |
| PIPE-COMP,DOWNTUBE,RH,F.S.BLK (Ref # 31064A) | 31064-0097-18R | 1 |
| PIPE-COMP,REAR CROSS,F.S.BLK (Ref # 31064B) | 31064-0183-18R | 1 |
| PIPE-COMP,REAR CROSS,F.S.BLACK (Ref # 31064C) | 31064-0184-18R | 1 |
| FRAME-COMP,F.S.BLACK (Ref # 32160) | 32160-0597-18R | 1 |
| CAP,STEERING STEM (Ref # 46098) | 46098-017 | 1 |
| NUT,25MM,T=10 (Ref # 92015) | 92015-1377 | 1 |
| NUT,25MM,T=6 (Ref # 92015A) | 92015-1378 | 1 |
| RACE,ROLLER,32005JR RS (Ref # 92047) | 92047-017 | 1 |
| SEAL-OIL,XMHE36X52X4J (Ref # 92049) | 92049-1162 | 1 |
| BEARING-ROLLER,HR320/28XJ (Ref # 92116) | 92116-1009 | 1 |
| BOLT,SOCKET,10X23 (Ref # 92150) | 92150-1942 | 4 |
| WASHER,22.5X36X2.3 (Ref # 92200) | 92200-0270 | 1 |
| WASHER,CLAW,25.5X34X0.6 (Ref # 92200A) | 92200-0353 | 1 |
| NUT,CAP,22MM (Ref # 92210) | 92210-0263 | 1 |