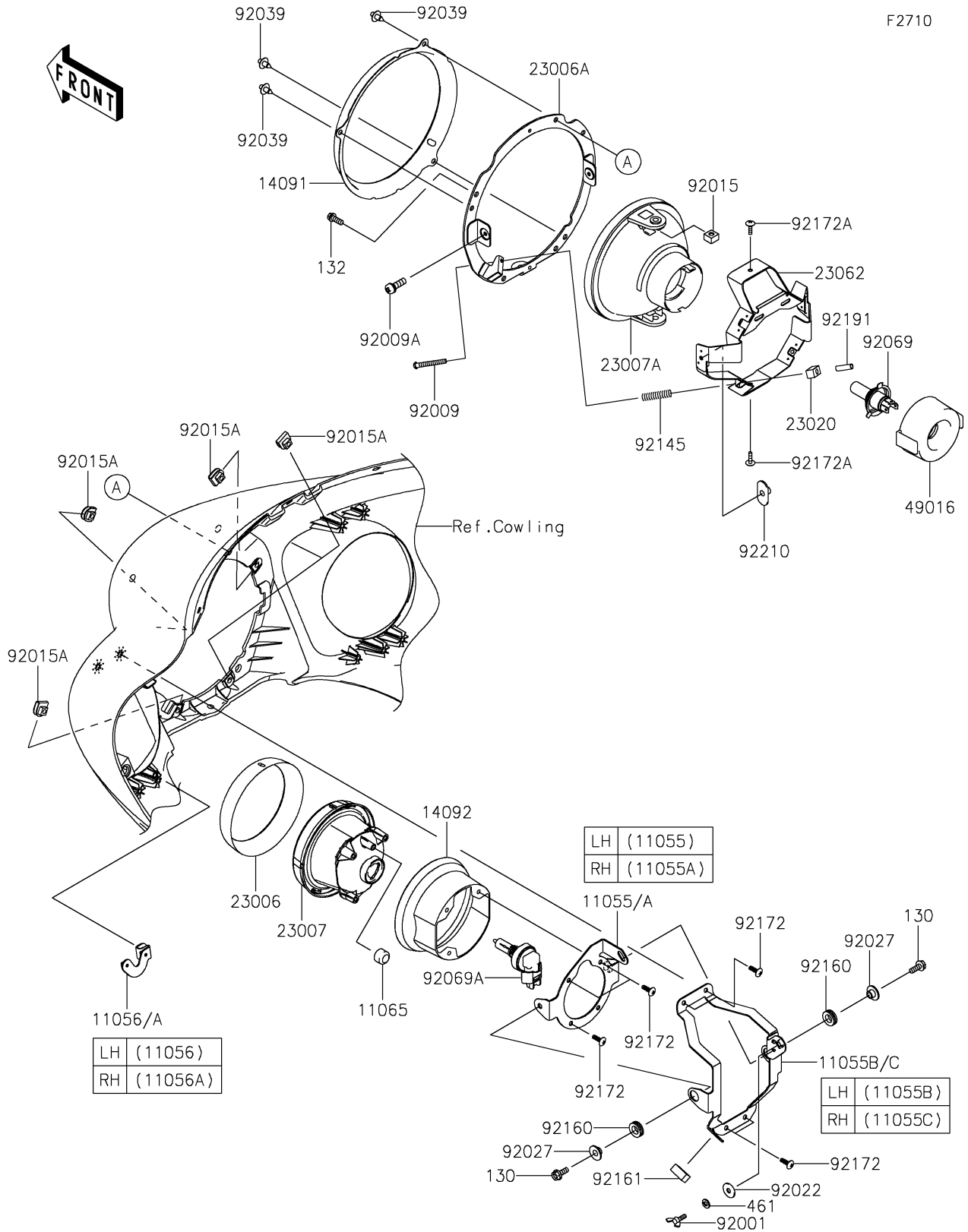


2018 VULCAN® 1700 VOYAGER® ABS PARTS DIAGRAM

Headlight(s)



2018 VULCAN® 1700 VOYAGER® ABS PARTS LIST

Headlight(s)

ITEM NAME	PART NUMBER	QUANTITY
BRACKET,AIMING,LH (Ref # 11055)	11055-0730	1
BRACKET,AIMING,RH (Ref # 11055A)	11055-0990	1
BRACKET,AIMING,LH (Ref # 11055B)	11055-1779	1
BRACKET,AIMING,RH (Ref # 11055C)	11055-1780	1
BRACKET,SUB LAMP,LH,LWR (Ref # 11056)	11056-1145	1
BRACKET,SUB LAMP,RH,LWR (Ref # 11056A)	11056-1146	1
CAP (Ref # 11065)	11065-0135	2
BOLT-FLANGED,6X16 (Ref # 130)	130AA0616	4
BOLT-FLANGED-SMALL,6X16 (Ref # 132)	132BA0616	4
COVER,RETAINER (Ref # 14091)	14091-1620	1
COVER (Ref # 14092)	14092-0130	2
RIM-LAMP (Ref # 23006)	23006-0015	2
RIM-LAMP (Ref # 23006A)	23006-0016	1
LENS-COMP,SUB LAMP (Ref # 23007)	23007-0118	2
LENS-COMP,HEAD LAMP (Ref # 23007A)	23007-1396	1
NUT,4MM,FOCUS ADJUST (Ref # 23020)	23020-018	2
BRACKET-COMP,HEAD LAMP (Ref # 23062)	23062-1132	1
WASHER-SPRING,6MM (Ref # 461)	461DA0600	2
COVER-SEAL,SOCKET (Ref # 49016)	49016-1203	1
BOLT,WING,6X15 (Ref # 92001)	92001-1703	2
SCREW,FOCUS ADJUST,4X60 (Ref # 92009)	92009-1816	2
SCREW,5X16 (Ref # 92009A)	92009-1879	2
NUT,5MM (Ref # 92015)	92015-1157	2
NUT,CLIP,6MM (Ref # 92015A)	92015-1904	4
WASHER,6.5X20X1.6 (Ref # 92022)	92022-1557	2
COLLAR,L=7.4 (Ref # 92027)	92027-1848	4
RIVET (Ref # 92039)	92039-0083	3
BULB,12V 60/55W,H4 (Ref # 92069)	92069-0050	1
BULB,12V 35W,H8 (Ref # 92069A)	92069-0054	2

2018 VULCAN® 1700 VOYAGER® ABS PARTS LIST

Headlight(s)

ITEM NAME	PART NUMBER	QUANTITY
SPRING,HEAD LAMP LENS (Ref # 92145)	92145-1268	2
DAMPER (Ref # 92160)	92160-1278	4
DAMPER (Ref # 92161)	92161-0718	2
SCREW,TAPPING,5X16 (Ref # 92172)	92172-0238	14
SCREW,TAPPING,4X16 (Ref # 92172A)	92172-0391	2
TUBE,3.5X5.5X19 (Ref # 92191)	92191-1217	2
NUT,SPECIAL,5MM (Ref # 92210)	92210-1060	2