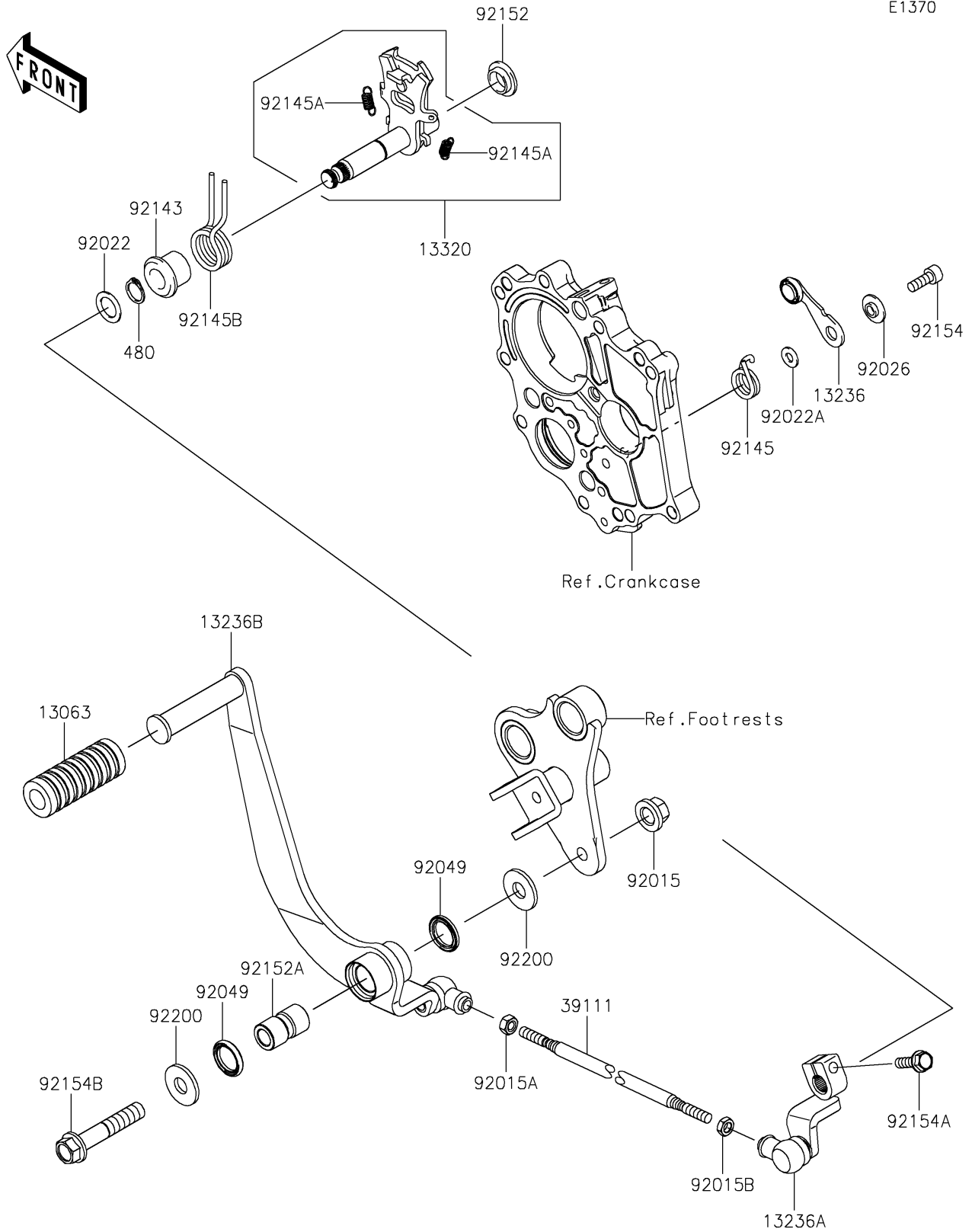


2020 VULCAN® S ABS SE PARTS DIAGRAM

Gear Change Mechanism

E1370



2020 VULCAN® S ABS SE PARTS LIST

Gear Change Mechanism

| ITEM NAME | PART NUMBER | QUANTITY |
|---|-------------|----------|
| DAMPER,PEDAL (Ref # 13063) | 13063-002 | 1 |
| LEVER-COMP,POSITION (Ref # 13236) | 13236-0170 | 1 |
| LEVER-COMP (Ref # 13236A) | 13236-0756 | 1 |
| LEVER-COMP,CHANGE PEDAL (Ref # 13236B) | 13236-0780 | 1 |
| LEVER-ASSY,CHANGE SHAFT (Ref # 13320) | 13320-0032 | 1 |
| ROD-TIE,L=205MM (Ref # 39111) | 39111-0332 | 1 |
| CIRCLIP-TYPE-C,13MM (Ref # 480) | 480J1300 | 1 |
| NUT,FLANGED,10MM (Ref # 92015) | 92015-077 | 1 |
| NUT,6MM (Ref # 92015A) | 92015-1443 | 1 |
| NUT,LEFT HANDED,6MM (Ref # 92015B) | 92015-1444 | 1 |
| WASHER,13.3X20X1 (Ref # 92022) | 92022-1496 | 1 |
| WASHER,6X12.8X1.2 (Ref # 92022A) | 92022-1827 | 1 |
| SPACER (Ref # 92026) | 92026-1217 | 1 |
| SEAL-OIL (Ref # 92049) | 92049-0093 | 2 |
| COLLAR,RETURN SPRING (Ref # 92143) | 92143-1498 | 1 |
| SPRING,POSITION (Ref # 92145) | 92145-0304 | 1 |
| SPRING,5.5X0.7X18 (Ref # 92145A) | 92145-0703 | 2 |
| SPRING,CHANGE SHAFT RETURN (Ref # 92145B) | 92145-1744 | 1 |
| COLLAR (Ref # 92152) | 92152-1075 | 1 |
| COLLAR (Ref # 92152A) | 92152-1883 | 1 |
| BOLT,SOCKET,6X16 (Ref # 92154) | 92154-0235 | 1 |
| BOLT,FLANGED,6X20 (Ref # 92154A) | 92154-0786 | 1 |
| BOLT,FLANGED,10X54 (Ref # 92154B) | 92154-1730 | 1 |
| WASHER,11X26X2.6 (Ref # 92200) | 92200-0352 | 2 |