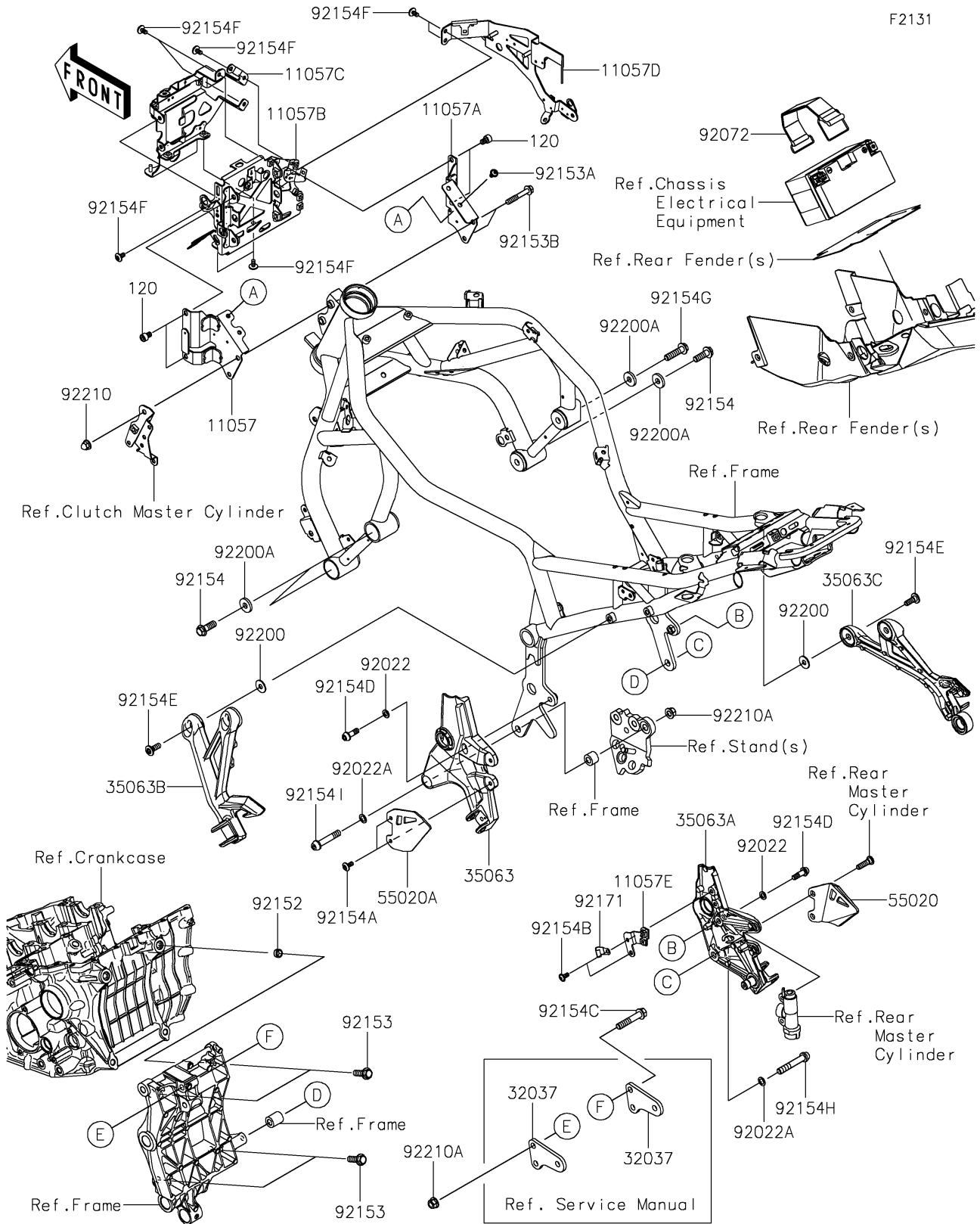


2020 Z H2 PARTS DIAGRAM

Frame Fittings



2020 Z H2 PARTS LIST

Frame Fittings

| ITEM NAME | PART NUMBER | QUANTITY |
|--|----------------|----------|
| BRACKET,HEAD LAMP,RR,LH (Ref # 11057) | 11057-2920 | 1 |
| BRACKET,HEAD LAMP,RR,RH (Ref # 11057A) | 11057-2921 | 1 |
| BRACKET,HEAD LAMP,MID (Ref # 11057B) | 11057-2922 | 1 |
| BRACKET,HEAD LAMP,FR (Ref # 11057C) | 11057-2923 | 1 |
| BRACKET,SHROUD,LH (Ref # 11057D) | 11057-2924 | 1 |
| BRACKET,RR RESERVOIR TANK (Ref # 11057E) | 11057-2925 | 1 |
| BOLT-SOCKET,8X12 (Ref # 120) | 120CA0812 | 4 |
| BRACKET-SHOCKABSORBER (Ref # 32037) | 32037-0429 | 2 |
| STAY,STEP,FR,LH,F.S.BLACK (Ref # 35063) | 35063-1495-18R | 1 |
| STAY,STEP,FR,RH,F.S.BLACK (Ref # 35063A) | 35063-1496-18R | 1 |
| STAY,STEP,RR,LH,F.S.BLACK (Ref # 35063B) | 35063-1497-18R | 1 |
| STAY,STEP,RR,RH,F.S.BLACK (Ref # 35063C) | 35063-1498-18R | 1 |
| GUARD,FR STEP,RH (Ref # 55020) | 55020-1944 | 1 |
| GUARD,FR STEP,LH (Ref # 55020A) | 55020-2284 | 1 |
| WASHER,8.5X14.5X1.6 (Ref # 92022) | 92022-1470 | 2 |
| WASHER,10.2X16X1 (Ref # 92022A) | 92022-1829 | 2 |
| BAND,BATTERY (Ref # 92072) | 92072-0878 | 1 |
| COLLAR,DOWEL PIN (Ref # 92152) | 92152-0679 | 2 |
| BOLT,FLANGED,10X30 (Ref # 92153) | 92153-0801 | 4 |
| BOLT,SOCKET,6X12 (Ref # 92153A) | 92153-1617 | 2 |
| BOLT,8X50 (Ref # 92153B) | 92153-7073 | 2 |
| BOLT,FLANGED,10X30 (Ref # 92154) | 92154-0543 | 3 |
| BOLT,SOCKET,6X14 (Ref # 92154A) | 92154-0745 | 2 |
| BOLT,SOCKET,6X14 (Ref # 92154B) | 92154-0856 | 2 |
| BOLT,FLANGED,10X54 (Ref # 92154C) | 92154-0903 | 3 |
| BOLT,SOCKET,8X25 (Ref # 92154D) | 92154-1557 | 2 |
| BOLT,SOCKET,8X23 (Ref # 92154E) | 92154-1901 | 4 |
| BOLT,SOCKET,6X12 (Ref # 92154F) | 92154-2706 | 8 |
| BOLT,FLANGED,10X40 (Ref # 92154G) | 92154-2924 | 1 |

2020 Z H2 PARTS LIST

Frame Fittings

| ITEM NAME | PART NUMBER | QUANTITY |
|--------------------------------------|-------------|----------|
| BOLT,SOCKET,10X60 (Ref # 92154H) | 92154-4044 | 1 |
| BOLT,SOCKET,10X52 (Ref # 92154I) | 92154-4045 | 1 |
| CLAMP (Ref # 92171) | 92171-0813 | 1 |
| WASHER,8.5X23X1.6 (Ref # 92200) | 92200-1936 | 4 |
| WASHER,10.5X26X4 (Ref # 92200A) | 92200-3798 | 4 |
| NUT,CAP,8MM (Ref # 92210) | 92210-1132 | 1 |
| NUT,LOCK,FLANGED,10MM (Ref # 92210A) | 92210-1139 | 4 |