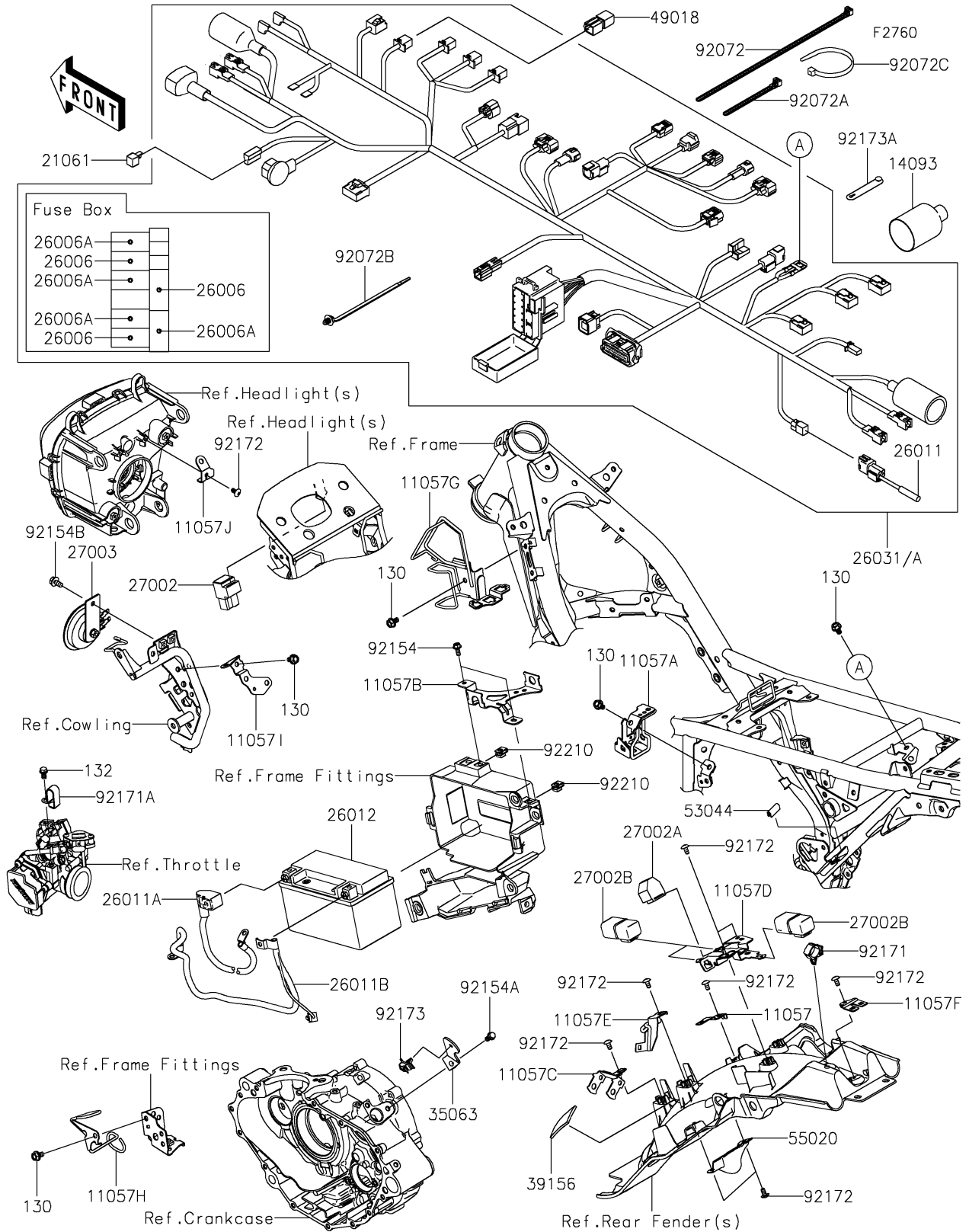


2021 KLX® 230 PARTS DIAGRAM

Chassis Electrical Equipment



2021 KLX® 230 PARTS LIST

Chassis Electrical Equipment

ITEM NAME	PART NUMBER	QUANTITY
BRACKET,DIAG (Ref # 11057)	11057-2018	1
BRACKET,VEHICLE DOWN SENSOR (Ref # 11057A)	11057-2021	1
BRACKET,ECU (Ref # 11057B)	11057-2022	1
BRACKET,MAGNETIC SWITCH (Ref # 11057C)	11057-2348	1
BRACKET,RELAY (Ref # 11057D)	11057-2349	1
BRACKET,FUSE BOX (Ref # 11057E)	11057-2350	1
BRACKET,RR HARNESS (Ref # 11057F)	11057-2351	1
BRACKET,FR HARNESS (Ref # 11057G)	11057-2352	1
BRACKET (Ref # 11057H)	11057-2463	1
BRACKET,ENGINE START SWITCH (Ref # 11057I)	11057-2520	1
BRACKET,HEAD LAMP ATTACHMENT (Ref # 11057J)	11057-4041	1
COVER,HARNESS (Ref # 14093)	14093-0720	1
RECTIFIER (Ref # 21061)	21061-1003	1
FUSE,MINI BLADE,15A,BLUE (Ref # 26006)	26006-0001	3
FUSE,MINI BLADE,10A,RED (Ref # 26006A)	26006-1078	4
WIRE-LEAD,DIAG (Ref # 26011)	26011-0858	1
WIRE-LEAD,BATTERY(+) (Ref # 26011A)	26011-1880	1
WIRE-LEAD,BATTERY(-) (Ref # 26011B)	26011-1915	1
BATTERY,YTX7A-BS,12V 6.3AH (Ref # 26012)	26012-0882	1
HARNESS,MAIN (Ref # 26031)	26031-2820	1
HARNESS,MAIN (Ref # 26031A)	26031-2822	1
RELAY-ASSY (Ref # 27002)	27002-0012	1
RELAY-ASSY,TURN SIGNAL (Ref # 27002A)	27002-0031	1
RELAY-ASSY (Ref # 27002B)	27002-1086	3
HORN (Ref # 27003)	27003-0155	1
STAY (Ref # 35063)	35063-1476	1
PAD,55X30X5 (Ref # 39156)	39156-2451	1
DIODE (Ref # 49018)	49018-0005	1
TRIM,9X6.5X20 (Ref # 53044)	53044-0596	1

2021 KLX® 230 PARTS LIST

Chassis Electrical Equipment

ITEM NAME	PART NUMBER	QUANTITY
GUARD,OXYGEN SENSOR (Ref # 55020)	55020-2254	1
BAND,L=250 (Ref # 92072)	92072-1237	1
BAND,L=140 (Ref # 92072A)	92072-1293	3
BAND,OS170-FT7(BLACK) (Ref # 92072B)	92072-1414	AR
BAND,L=152 (Ref # 92072C)	92072-3874	1
BOLT,FLANGED,5X12 (Ref # 92154)	92154-1215	2
BOLT,FLANGED,6X12 (Ref # 92154A)	92154-1776	1
BOLT,FLANGED,6X12 (Ref # 92154B)	92154-2776	1
CLAMP,BRAKE HOSE (Ref # 92171)	92171-0316	1
BOLT-FLANGED,6X10 (Ref # 130)	130BA0610	5
BOLT-FLANGED-SMALL,6X10 (Ref # 132)	132BA0610	1
CLAMP (Ref # 92171A)	92171-0911	1
SCREW,CROS,5X10 (Ref # 92172)	92172-1255	9
CLAMP (Ref # 92173)	92173-1163	1
CLAMP (Ref # 92173A)	92173-1526	2
NUT,PLATE,5MM (Ref # 92210)	92210-0262	2