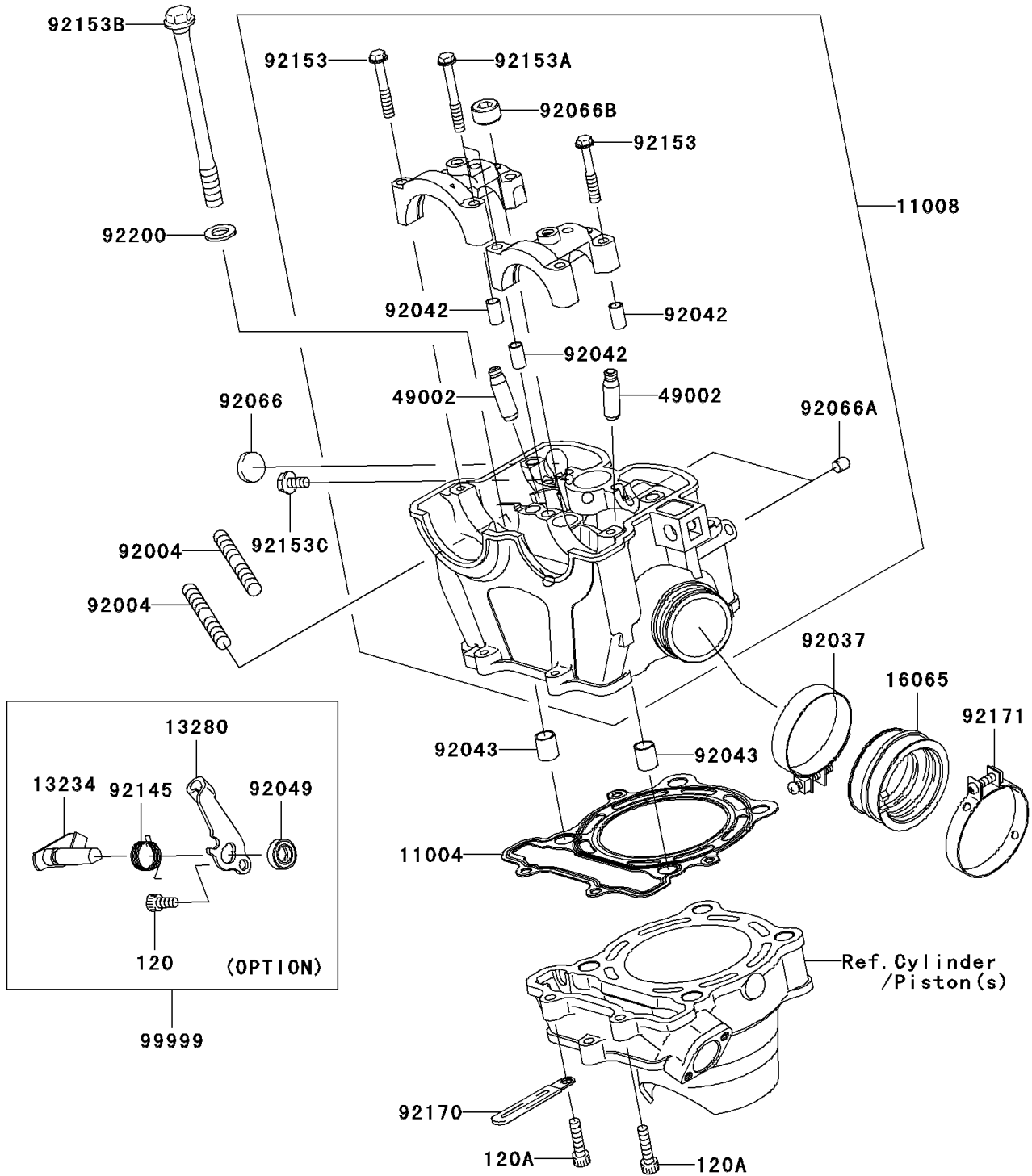


# 2004 KX250F PARTS DIAGRAM

Cylinder Head

E1111



## 2004 KX250F PARTS LIST

### Cylinder Head

| ITEM NAME                          | PART NUMBER | QUANTITY |
|------------------------------------|-------------|----------|
| BOLT-SOCKET,6X12 (Ref # 120)       | 120P0612    | 1        |
| BOLT-SOCKET,6X25 (Ref # 120A)      | 120P0625    | 2        |
| GASKET-HEAD (Ref # 11004)          | 11004-0003  | 1        |
| HEAD-COMP-CYLINDER (Ref # 11008)   | 11008-0009  | 1        |
| SHAFT-COMP,DECOMP (Ref # 13234)    | 13234-0009  | 1        |
| HOLDER,DECOMP (Ref # 13280)        | 13280-0038  | 1        |
| HOLDER-CARBURETOR (Ref # 16065)    | 16065-0012  | 1        |
| GUIDE-VALVE (Ref # 49002)          | 49002-0003  | AR       |
| STUD,8X22 (Ref # 92004)            | 92004-1249  | 2        |
| CLAMP (Ref # 92037)                | 92037-1523  | 1        |
| PIN,DOWEL,6.3X8X14 (Ref # 92042)   | 92042-007   | 4        |
| PIN,10.1X12X14 (Ref # 92043)       | 92043-4009  | 2        |
| SEAL-OIL (Ref # 92049)             | 92049-1196  | 1        |
| PLUG,4X18 (Ref # 92066)            | 92066-0024  | 1        |
| PLUG,OIL LINE,7.2X8 (Ref # 92066A) | 92066-1012  | 2        |
| PLUG,10X16.6 (Ref # 92066B)        | 92066-3777  | 1        |
| SPRING (Ref # 92145)               | 92145-0048  | 1        |
| BOLT,6X38 (Ref # 92153)            | 92153-0338  | 6        |
| BOLT,6X45 (Ref # 92153A)           | 92153-0339  | 2        |
| BOLT,10X122 (Ref # 92153B)         | 92153-0341  | 4        |
| BOLT,6X12 (Ref # 92153C)           | 92153-0806  | 1        |
| CLAMP (Ref # 92170)                | 92170-1514  | 1        |
| CLAMP (Ref # 92171)                | 92171-0314  | 1        |
| WASHER,10.5X19X2.3 (Ref # 92200)   | 92200-1339  | 4        |
| KIT.,MANUAL DECOMP (Ref # 99999)   | 99999-0023  | 1        |