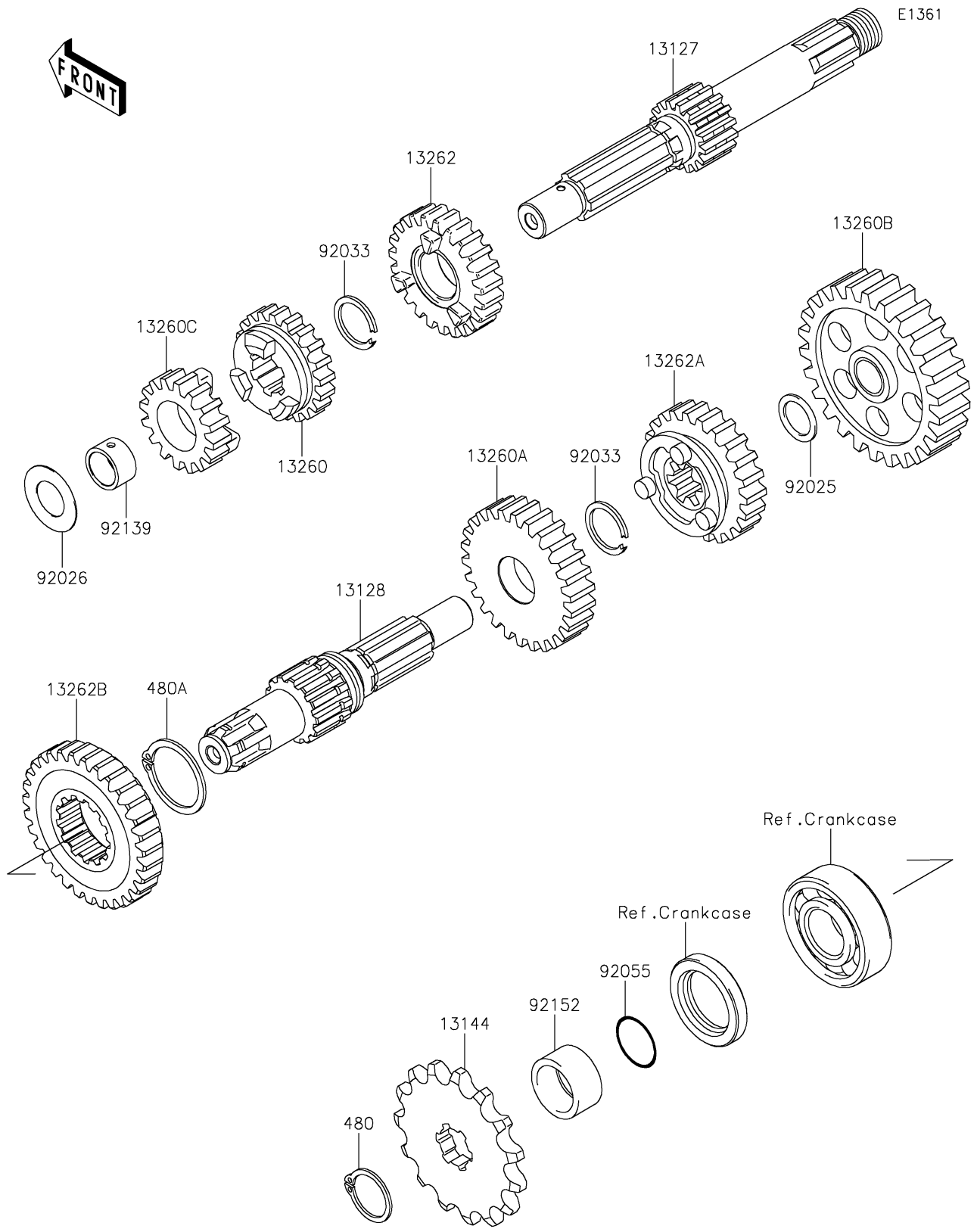


# 2021 KLX®110R PARTS DIAGRAM

## Transmission



## 2021 KLX®110R PARTS LIST

### Transmission

ITEM NAME	PART NUMBER	QUANTITY
SHAFT-TRANSMISSION INPUT,12T (Ref # 13127)	13127-0661	1
SHAFT-TRANSMISSION OUTPUT (Ref # 13128)	13128-0672	1
SPROCKET-OUTPUT,13T (Ref # 13144)	13144-1043	1
GEAR,INPUT 3RD,20T (Ref # 13260)	13260-1839	1
GEAR,OUTPUT 3RD,27T (Ref # 13260A)	13260-1842	1
GEAR,OUTPUT LOW,36T (Ref # 13260B)	13260-1862	1
GEAR,INPUT 2ND,16T (Ref # 13260C)	13260-1986	1
GEAR,INPUT 4TH,23T (Ref # 13262)	13262-0666	1
GEAR,OUTPUT 4TH,25T (Ref # 13262A)	13262-0667	1
GEAR,OUTPUT 2ND,31T (Ref # 13262B)	13262-0913	1
SHIM (Ref # 92025)	92025-1280	1
SPACER (Ref # 92026)	92026-1091	1
RING-SNAP,17MM (Ref # 92033)	92033-1060	2
RING-O,16.8MM (Ref # 92055)	92055-1235	1
BUSHING (Ref # 92139)	92139-1102	1
COLLAR,SPROCKET (Ref # 92152)	92152-0998	1
CIRCLIP-TYPE-C,17MM (Ref # 480)	480J1700	1
CIRCLIP-TYPE-C,24MM (Ref # 480A)	480J2400	1