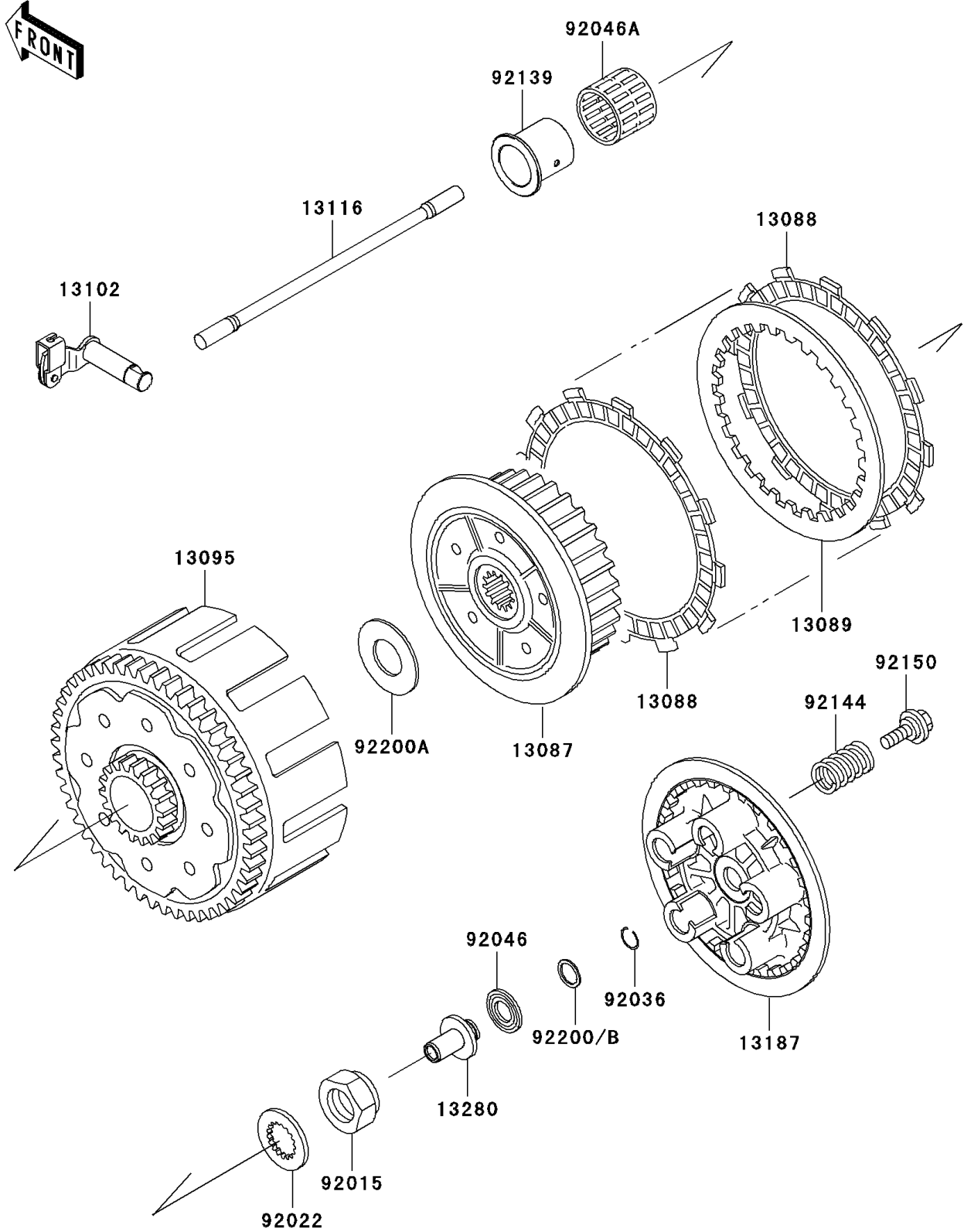


2007 KX250 PARTS DIAGRAM

Clutch

E1350



2007 KX250 PARTS LIST

Clutch

| ITEM NAME | PART NUMBER | QUANTITY |
|---|-------------|----------|
| HUB-CLUTCH (Ref # 13087) | 13087-1168 | 1 |
| PLATE-FRICTION (Ref # 13088) | 13088-1089 | 8 |
| PLATE-CLUTCH (Ref # 13089) | 13089-1066 | 7 |
| HOUSING-COMP-CLUTCH (Ref # 13095) | 13095-0048 | 1 |
| RELEASE-COMP-CLUTCH (Ref # 13102) | 13102-0014 | 1 |
| ROD-PUSH (Ref # 13116) | 13116-1172 | 1 |
| PLATE-CLUTCH OPERATING (Ref # 13187) | 13187-1090 | 1 |
| HOLDER,CLUTUCH RELEASE (Ref # 13280) | 13280-1284 | 1 |
| NUT,20MM (Ref # 92015) | 92015-1725 | 1 |
| WASHER (Ref # 92022) | 92022-1942 | 1 |
| RING-SNAP,PISTON PIN (Ref # 92036) | 92036-007 | 1 |
| BEARING-NEEDLE,FNTA-1326 (Ref # 92046) | 92046-1190 | 1 |
| BEARING-NEEDLE,K30X30X29.8 (Ref # 92046A) | 92046-1304 | 1 |
| BUSHING (Ref # 92139) | 92139-0096 | 1 |
| SPRING,CLUTCH (Ref # 92144) | 92144-1351 | 5 |
| BOLT,6X22 (Ref # 92150) | 92150-1489 | 5 |
| WASHER,13.4X25X1.0 (Ref # 92200) | 92200-0045 | AR |
| WASHER,22.5X47X2 (Ref # 92200A) | 92200-1143 | 1 |
| WASHER,13.4X25.0X1.5 (Ref # 92200B) | 92200-1548 | 1 |