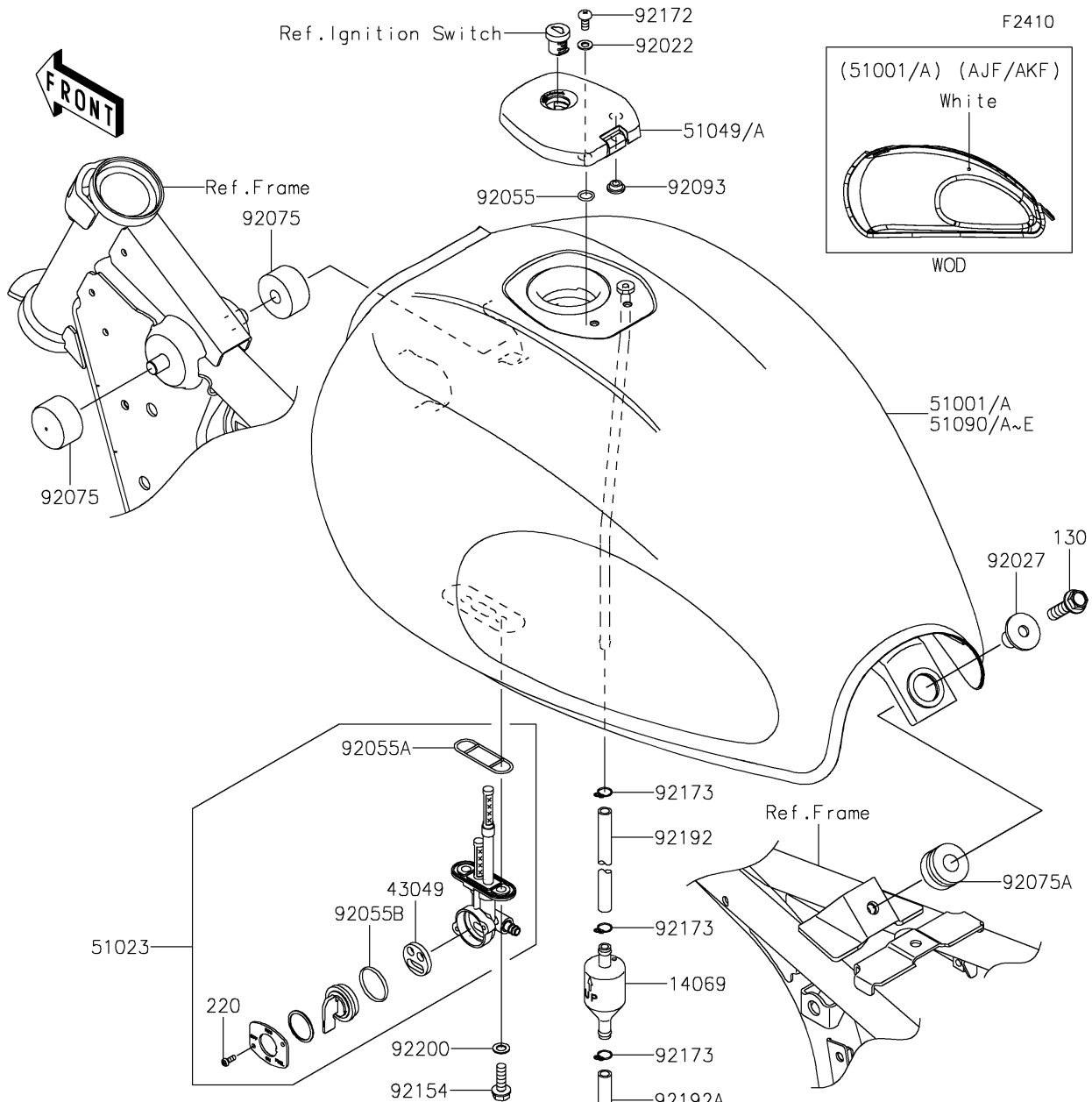


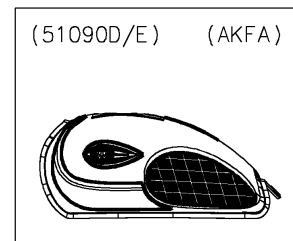
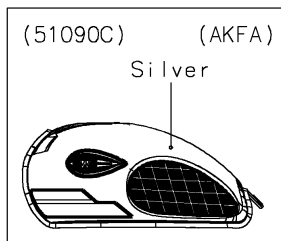
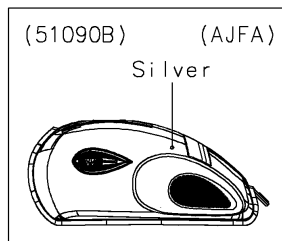
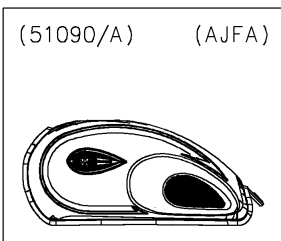
# 2018 W175 SE (Indonesia Only) PARTS DIAGRAM

Fuel Tank



(51090)	Green
(51090A)	Black

(51090D)	Blue
(51090E)	Black



## 2018 W175 SE (Indonesia Only) PARTS LIST

### Fuel Tank

ITEM NAME	PART NUMBER	QUANTITY
BREATHER,FUEL TANK (Ref # 14069)	14069-1004	1
PACKING,TAP VALVE (Ref # 43049)	43049-1091	1
TAP-ASSY,FUEL (Ref # 51023)	51023-1408	1
CAP-TANK,FUEL (Ref # 51049)	51049-0737	1
TANK-COMP-FUEL,M.M.C.GREEN (Ref # 51090)	51090-5225-36T	1
TANK-COMP-FUEL,M.S.BLACK (Ref # 51090A)	51090-5226-660	1
TANK-COMP-FUEL,M.R.SILVER (Ref # 51090B)	51090-5227-34X	1
WASHER,5.1X10X1.0 (Ref # 92022)	92022-1977	2
COLLAR,L=19.3 (Ref # 92027)	92027-1780	1
RING-O (Ref # 92055)	92055-1023	2
RING-O,FUEL TAP PACKING (Ref # 92055A)	92055-1112	1
RING-O,TAP LEVER (Ref # 92055B)	92055-1419	1
DAMPER,FUEL TANK (Ref # 92075)	92075-125	2
DAMPER (Ref # 92075A)	92075-1736	1
SEAL,FUEL TANK CAP (Ref # 92093)	92093-1030	1
BOLT,FLANGED,6X20 (Ref # 92154)	92154-2785	2
SCREW,5X10 (Ref # 92172)	92172-0496	2
CLAMP (Ref # 92173)	92173-1190	3
TUBE,BREATHER,6X9X450 (Ref # 92192)	92192-1822	1
TUBE,BREATHER,6X9X380 (Ref # 92192A)	92192-1823	1
WASHER,6.5X11.5X0.8 (Ref # 92200)	92200-0117	2
BOLT-FLANGED,8X30 (Ref # 130)	130BA0830	1
SCREW-PAN-CROS,3X8 (Ref # 220)	220AA0308	2