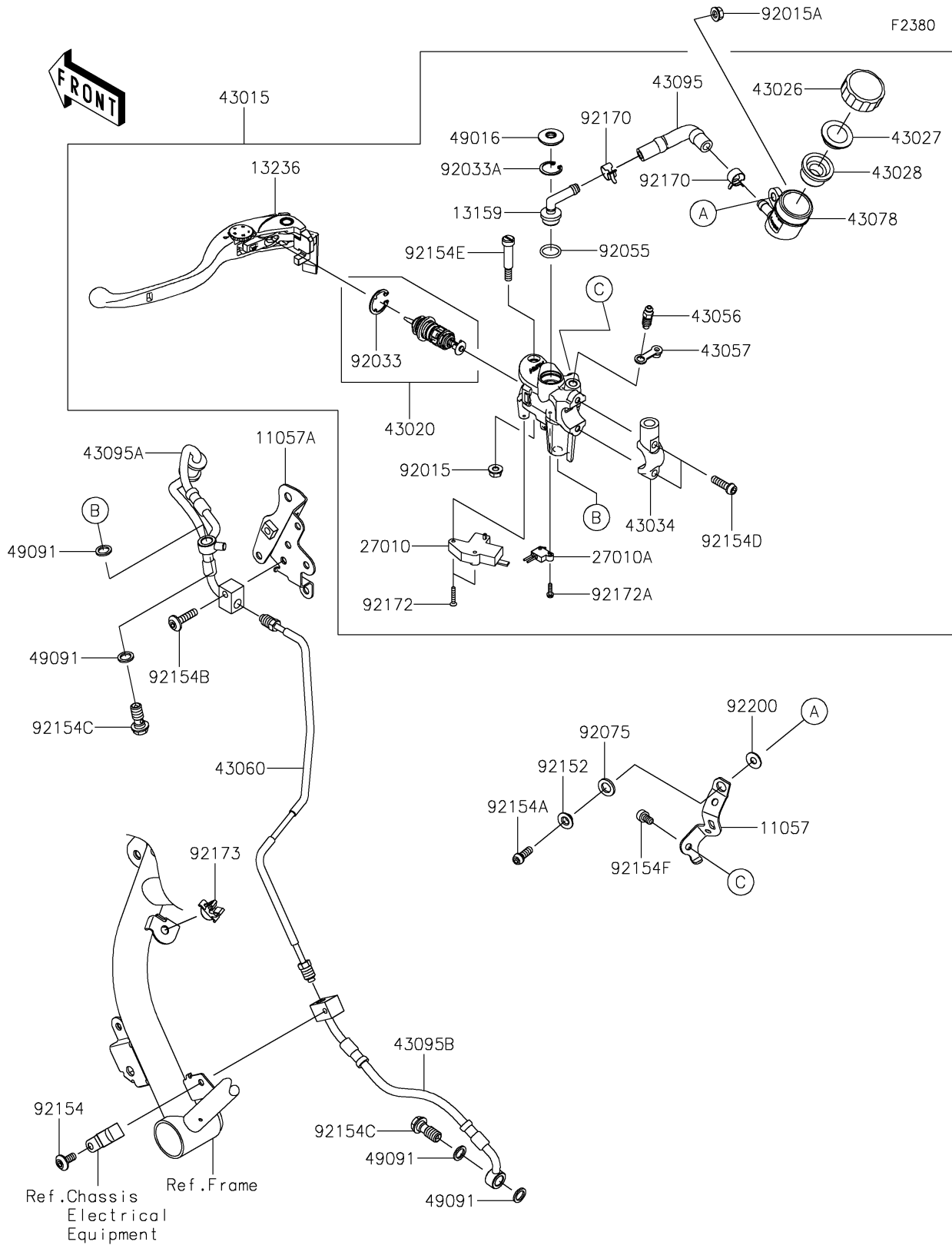


2021 Z H2 SE PARTS DIAGRAM

Clutch Master Cylinder



2021 Z H2 SE PARTS LIST

Clutch Master Cylinder

| ITEM NAME | PART NUMBER | QUANTITY |
|---|-------------|----------|
| BRACKET,RESERVOIR TANK (Ref # 11057) | 11057-2909 | 1 |
| BRACKET,HEAD PIPE (Ref # 11057A) | 11057-7240 | 1 |
| CONNECTOR (Ref # 13159) | 13159-1061 | 1 |
| LEVER-COMP,CLUTCH (Ref # 13236) | 13236-0803 | 1 |
| SWITCH,CLUTCH (Ref # 27010) | 27010-0854 | 1 |
| SWITCH,CRUISE CONTROL CANCEL (Ref # 27010A) | 27010-0967 | 1 |
| CYLINDER-ASSY-MASTER,CLUTCH (Ref # 43015) | 43015-0785 | 1 |
| PISTON-COMP-BRAKE (Ref # 43020) | 43020-0028 | 1 |
| CAP-BRAKE (Ref # 43026) | 43026-1070 | 1 |
| PLATE-DIAPHRAGM (Ref # 43027) | 43027-1054 | 1 |
| DIAPHRAGM (Ref # 43028) | 43028-1073 | 1 |
| HOLDER-BRAKE,MASTER CYLINDER (Ref # 43034) | 43034-0057 | 1 |
| BREATHER-BRAKE (Ref # 43056) | 43056-1056 | 1 |
| CAP-BREATHER (Ref # 43057) | 43057-1001 | 1 |
| PIPE-BRAKE (Ref # 43060) | 43060-0346 | 1 |
| RESERVOIR (Ref # 43078) | 43078-0580 | 1 |
| HOSE-BRAKE,FR MASTER CYLINDER (Ref # 43095) | 43095-0040 | 1 |
| HOSE-BRAKE,M/C-BRAKE PIPE (Ref # 43095A) | 43095-1701 | 1 |
| HOSE-BRAKE,BRAKE PIPE-ENG. (Ref # 43095B) | 43095-1702 | 1 |
| COVER-SEAL (Ref # 49016) | 49016-1147 | 1 |
| WASHER-SEAL,10.1X14.5X1.5 (Ref # 49091) | 49091-0001 | 4 |
| NUT,FLANGED,6MM,BLACK (Ref # 92015) | 92015-1233 | 1 |
| NUT,FLANGED,6MM (Ref # 92015A) | 92015-1367 | 1 |
| RING-SNAP (Ref # 92033) | 92033-0034 | 1 |
| RING-SNAP,20.5MM (Ref # 92033A) | 92033-1186 | 1 |
| RING-O,14.8X2.4 (Ref # 92055) | 92055-0741 | 1 |
| DAMPER (Ref # 92075) | 92075-1564 | 1 |
| COLLAR,6.5X10X5.3 (Ref # 92152) | 92152-1863 | 1 |
| BOLT,SOCKET,6X14 (Ref # 92154) | 92154-0907 | 1 |

2021 Z H2 SE PARTS LIST

Clutch Master Cylinder

| ITEM NAME | PART NUMBER | QUANTITY |
|---------------------------------|-------------|----------|
| BOLT,SOCKET,6X18 (Ref # 92154A) | 92154-1455 | 1 |
| BOLT,SOCKET,6X25 (Ref # 92154B) | 92154-1532 | 1 |
| BOLT,BANJO,10X23 (Ref # 92154C) | 92154-1712 | 2 |
| BOLT,SOCKET,6X22 (Ref # 92154D) | 92154-1724 | 2 |
| BOLT,LEVER (Ref # 92154E) | 92154-1912 | 1 |
| BOLT,SOCKET,6X8 (Ref # 92154F) | 92154-2914 | 1 |
| CLAMP,HOSE (Ref # 92170) | 92170-1091 | 2 |
| SCREW (Ref # 92172) | 92172-1242 | 2 |
| SCREW (Ref # 92172A) | 92172-1243 | 1 |
| CLAMP (Ref # 92173) | 92173-2180 | 1 |
| WASHER,6.5X16X1.0 (Ref # 92200) | 92200-3712 | 1 |