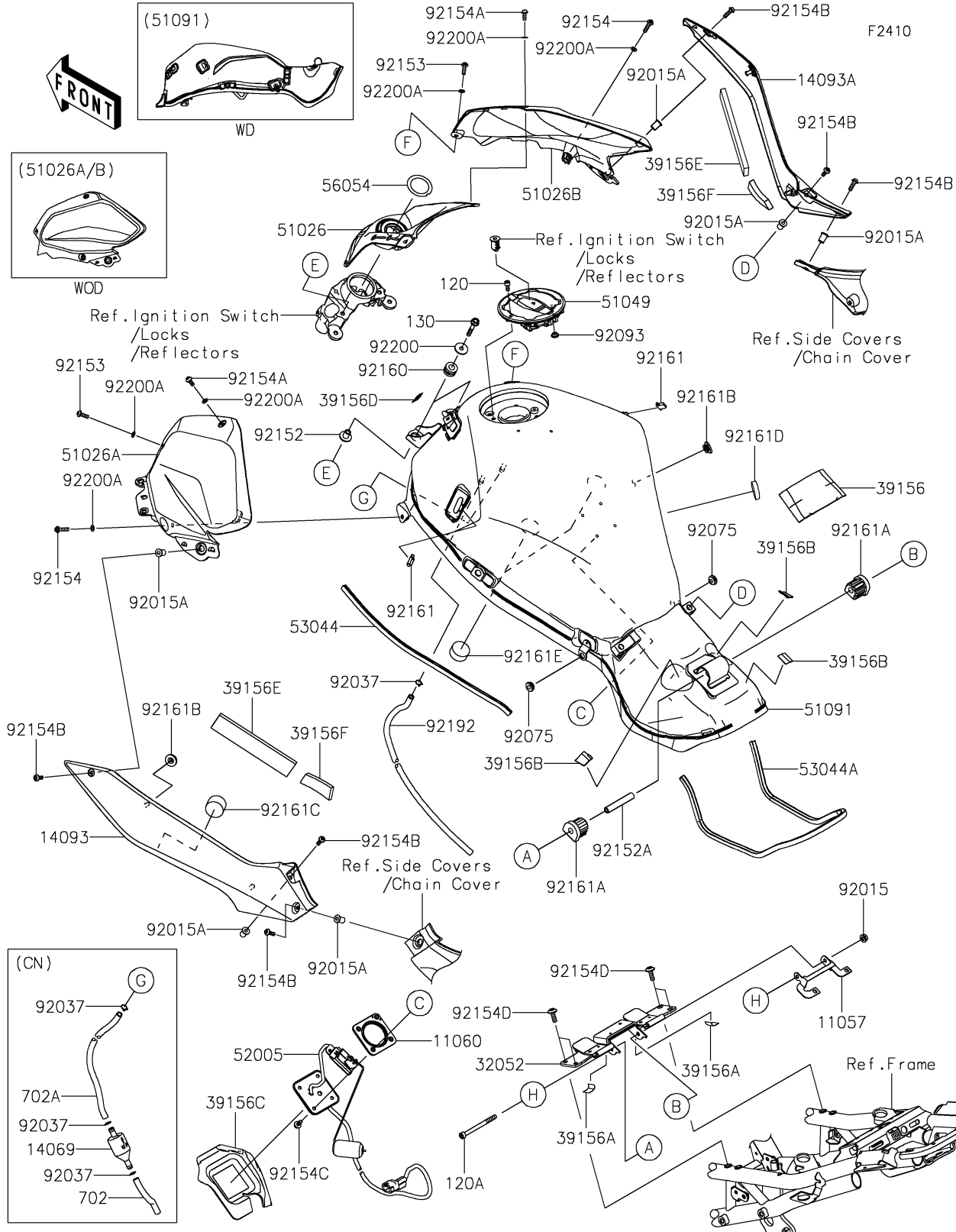


2021 Z H2 SE PARTS DIAGRAM

Fuel Tank



2021 Z H2 SE PARTS LIST

Fuel Tank

ITEM NAME	PART NUMBER	QUANTITY
BRACKET,FUEL GAUGE CONNECTOR (Ref # 11057)	11057-7412	1
GASKET,FUEL GAUGE (Ref # 11060)	11060-1952	1
COVER,KNEE GRIP,LH (Ref # 14093)	14093-0968	1
COVER,KNEE GRIP,RH (Ref # 14093A)	14093-0969	1
BRACKET-TANK (Ref # 32052)	32052-0823	1
PAD,RR FRM (Ref # 39156)	39156-1778	1
PAD,15X20X0.2 (Ref # 39156A)	39156-1784	2
PAD,20X20X1 (Ref # 39156B)	39156-2288	3
PAD,FUEL TANK (Ref # 39156C)	39156-2570	1
PAD,22X13X0.2 (Ref # 39156D)	39156-2591	1
PAD,30X150X8 (Ref # 39156E)	39156-2612	2
PAD (Ref # 39156F)	39156-2659	2
COVER TANK,CNT (Ref # 51026)	51026-0020	1
COVER TANK,LH,M.D.BLACK (Ref # 51026A)	51026-0023-17K	1
COVER TANK,RH,M.D.BLACK (Ref # 51026B)	51026-0024-17K	1
CAP-TANK (Ref # 51049)	51049-0735	1
TANK-COMP-FUEL,M.D.BLACK+GRN (Ref # 51091)	51091-5492-65L	1
GAUGE,FUEL (Ref # 52005)	52005-0772	1
TRIM,WINDSHIELD (Ref # 53044)	53044-1211	1
TRIM,L=760 (Ref # 53044A)	53044-1240	1
MARK,IG. SWITCH (Ref # 56054)	56054-2963	1
NUT,FLANGED,6MM (Ref # 92015)	92015-1367	1
NUT,WELL,5MM (Ref # 92015A)	92015-1757	6
DAMPER,6X16X7 (Ref # 92075)	92075-1011	2
SEAL,FUEL TANK CAP (Ref # 92093)	92093-1030	1
COLLAR,6.3X9.5X14.1 (Ref # 92152)	92152-1847	2
COLLAR,6X10X60.2 (Ref # 92152A)	92152-1964	1
BOLT,SOCKET,5X16 (Ref # 92153)	92153-1244	2
BOLT,SOCKET,5X20 (Ref # 92154)	92154-0210	2

2021 Z H2 SE PARTS LIST

Fuel Tank

ITEM NAME	PART NUMBER	QUANTITY
BOLT,SOCKET,5X12 (Ref # 92154A)	92154-1421	2
BOLT,SOCKET,5X16 (Ref # 92154B)	92154-1701	6
BOLT,FLANGED,5X12 (Ref # 92154C)	92154-1856	4
BOLT,SOCKET,6X18 (Ref # 92154D)	92154-2438	4
DAMPER,10X20X12 (Ref # 92160)	92160-1167	2
DAMPER (Ref # 92161)	92161-0365	2
BOLT-SOCKET,5X12 (Ref # 120)	120CA0512	4
BOLT-SOCKET,6X75 (Ref # 120A)	120CA0675	1
BOLT-FLANGED,6X35 (Ref # 130)	130BA0635	2
DAMPER,FUEL TANK (Ref # 92161A)	92161-1737	2
DAMPER,6X20X7.5 (Ref # 92161B)	92161-1937	2
DAMPER,30X20 (Ref # 92161C)	92161-2328	1
DAMPER,30X8 (Ref # 92161D)	92161-2329	1
DAMPER (Ref # 92161E)	92161-3790	2
TUBE,DRAIN,6X9X808 (Ref # 92192)	92192-1669	1
WASHER,6.5X22X1.6 (Ref # 92200)	92200-1087	2
WASHER,5.2X10X0.5 (Ref # 92200A)	92200-1730	6