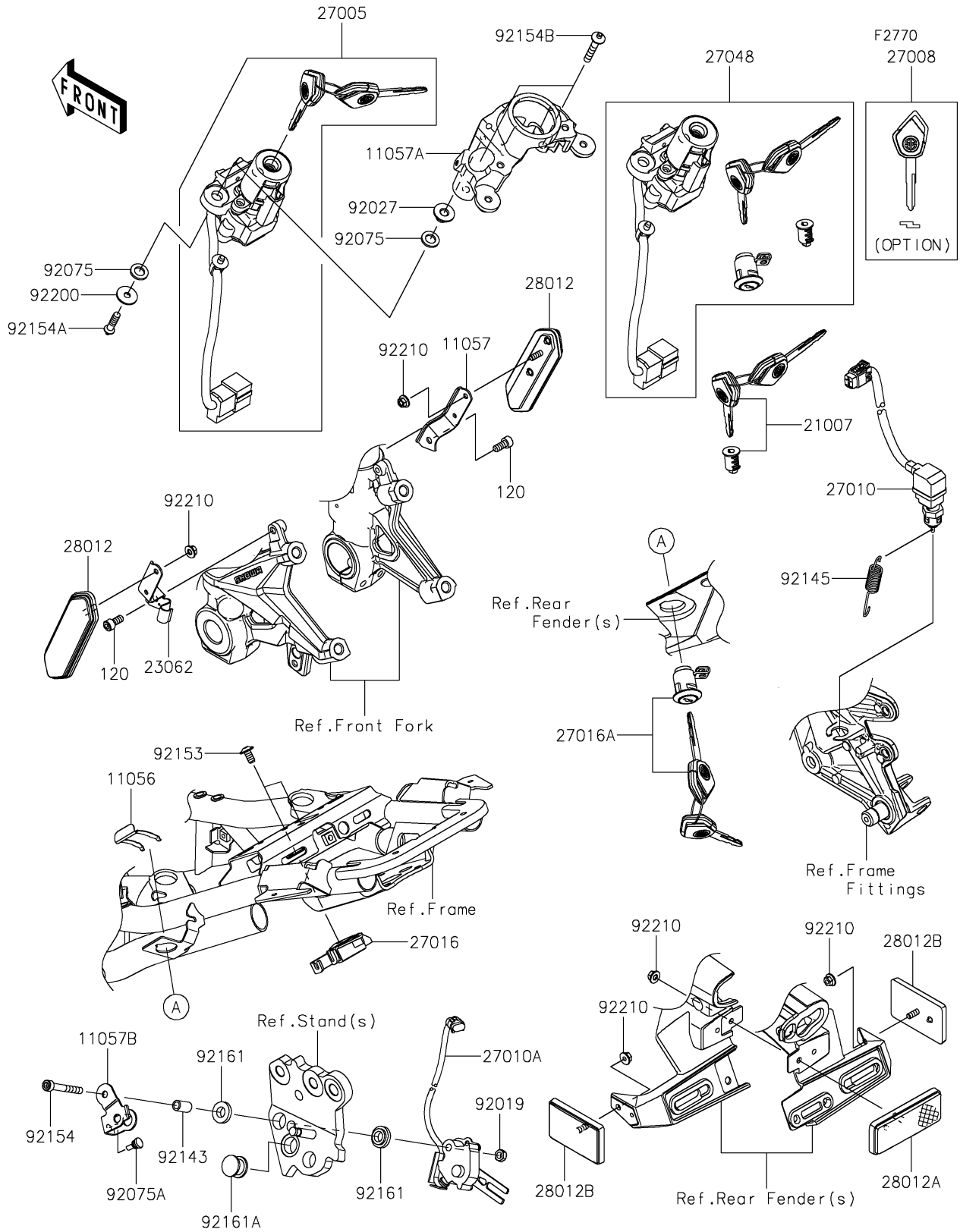


# 2021 Z H2 SE PARTS DIAGRAM

## Ignition Switch/Locks/Reflectors



## 2021 Z H2 SE PARTS LIST

### Ignition Switch/Locks/Reflectors

ITEM NAME	PART NUMBER	QUANTITY
BRACKET,CLASP (Ref # 11056)	11056-0238	1
BRACKET,REFLECTOR,RH (Ref # 11057)	11057-1301	1
BRACKET,IGNITION SWITCH (Ref # 11057A)	11057-3840	1
BRACKET,SIDE STAND SWITCH (Ref # 11057B)	11057-4105	1
BOLT-SOCKET,6X14 (Ref # 120)	120CC0614	2
ROTOR,LOCK,TANK CAP (Ref # 21007)	21007-5079	1
BRACKET-COMP,REFLECTOR,LH (Ref # 23062)	23062-1291	1
SWITCH-ASSY-IGNITION (Ref # 27005)	27005-0711	1
KEY-LOCK,BLANK (Ref # 27008)	27008-0590	1
SWITCH,STOP (Ref # 27010)	27010-0924	1
SWITCH,SIDE STAND (Ref # 27010A)	27010-0934	1
LOCK-ASSY,SEAT STRIKER (Ref # 27016)	27016-1115	1
LOCK-ASSY,SEAT (Ref # 27016A)	27016-5389	1
SWITCH-ASSY (Ref # 27048)	27048-5258	1
REFLECTOR-REFLEX,CCC (Ref # 28012)	28012-0045	2
REFLECTOR-REFLEX (Ref # 28012A)	28012-1077	1
REFLECTOR-REFLEX (Ref # 28012B)	28012-1088	2
NUT,LOCK,6MM (Ref # 92019)	92019-008	1
COLLAR,L=9.6 (Ref # 92027)	92027-1045	2
DAMPER (Ref # 92075)	92075-1564	4
DAMPER,6X10X15 (Ref # 92075A)	92075-1808	1
COLLAR,6.5X9.5X17 (Ref # 92143)	92143-1408	1
SPRING (Ref # 92145)	92145-1908	1
BOLT,SOCKET,6X12 (Ref # 92153)	92153-1617	2
BOLT,SOCKET,6X45 (Ref # 92154)	92154-0508	1
BOLT,TORX,6X22 (Ref # 92154A)	92154-1858	2
BOLT,E TYPE TORX,6X35 (Ref # 92154B)	92154-2207	2
DAMPER (Ref # 92161)	92161-0117	2
DAMPER (Ref # 92161A)	92161-0118	1

## 2021 Z H2 SE PARTS LIST

### Ignition Switch/Locks/Reflectors

ITEM NAME	PART NUMBER	QUANTITY
WASHER,6X20X1.6 (Ref # 92200)	92200-0212	2
NUT,FLANGED,5MM (Ref # 92210)	92210-0007	5