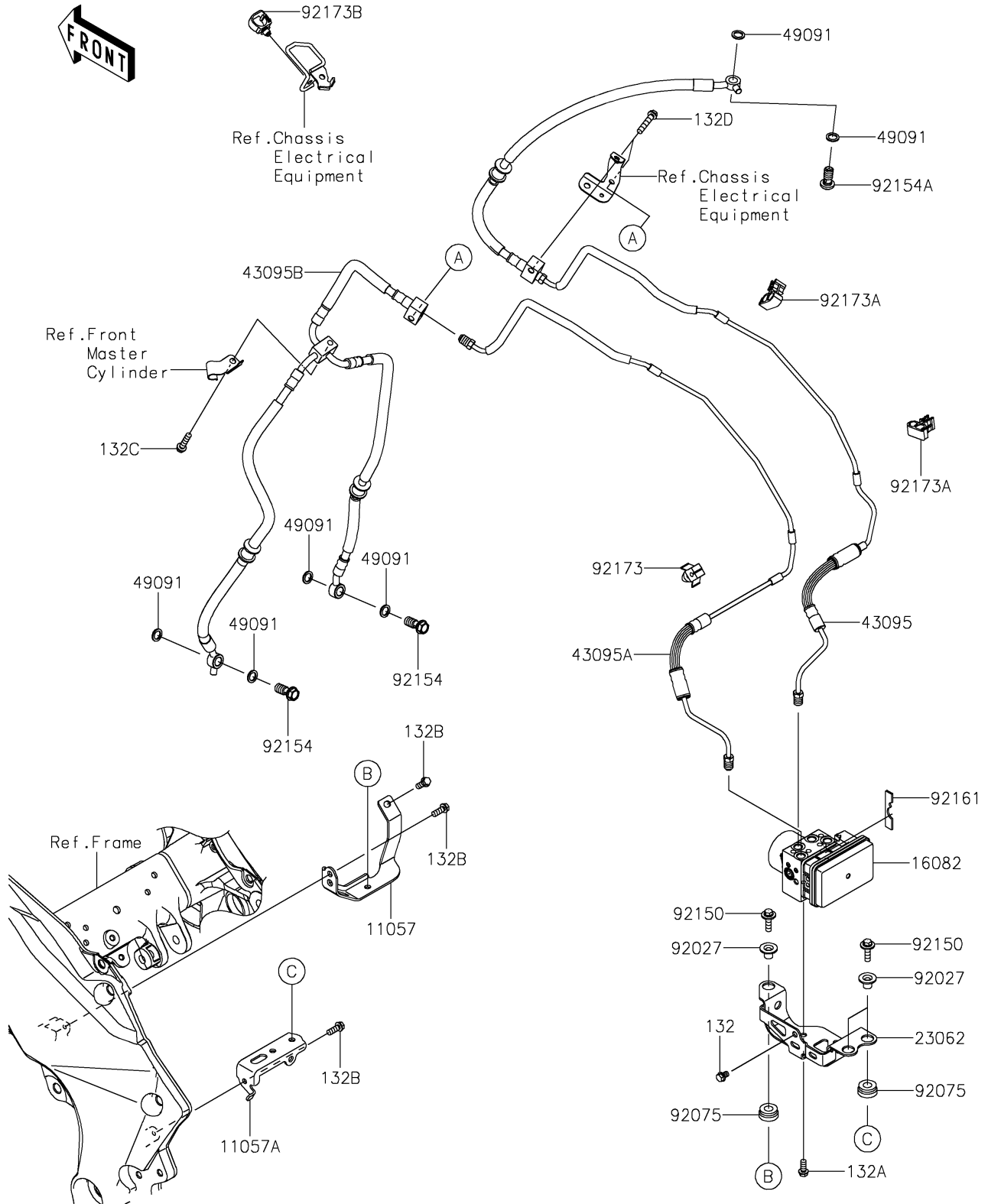


2019 VERSYS® 1000 SE LT+ PARTS DIAGRAM

Brake Piping

F2262



2019 VERSYS® 1000 SE LT+ PARTS LIST

Brake Piping

ITEM NAME	PART NUMBER	QUANTITY
BRACKET,FR (Ref # 11057)	11057-1705	1
BRACKET,RR (Ref # 11057A)	11057-1706	1
BOLT-FLANGED-SMALL,6X8 (Ref # 132)	132BA0608	1
BOLT-FLANGED-SMALL,6X14 (Ref # 132A)	132BA0614	1
BOLT-FLANGED-SMALL,6X16 (Ref # 132B)	132BA0616	3
BOLT-FLANGED-SMALL,6X25 (Ref # 132C)	132BA0625	1
BOLT-FLANGED-SMALL,6X30 (Ref # 132D)	132BA0630	2
PUMP-ASSY-OIL,ABS,9.1MP (Ref # 16082)	16082-0804	1
BRACKET-COMP,ABS (Ref # 23062)	23062-1177	1
HOSE-BRAKE,FR M/CYL.-ABS HU (Ref # 43095)	43095-1584	1
HOSE-BRAKE,ABS HU-CALIPER (Ref # 43095A)	43095-1587	1
HOSE-BRAKE,HEAD PIPE-CALIPER (Ref # 43095B)	43095-1588	1
WASHER-SEAL,10.1X14.5X1.5 (Ref # 49091)	49091-0001	6
COLLAR,FLANGED,L=12.1,BLACK (Ref # 92027)	92027-1651	3
DAMPER (Ref # 92075)	92075-277	3
BOLT,FLANGED,6X22 (Ref # 92150)	92150-1481	3
BOLT,BANJO,10X23 (Ref # 92154)	92154-1712	2
BOLT,BANJO,10X21 (Ref # 92154A)	92154-3834	1
DAMPER (Ref # 92161)	92161-1673	1
CLAMP (Ref # 92173)	92173-0088	1
CLAMP,CLIP (Ref # 92173A)	92173-0799	2
CLAMP,HOLDER CLIP (Ref # 92173B)	92173-0868	1