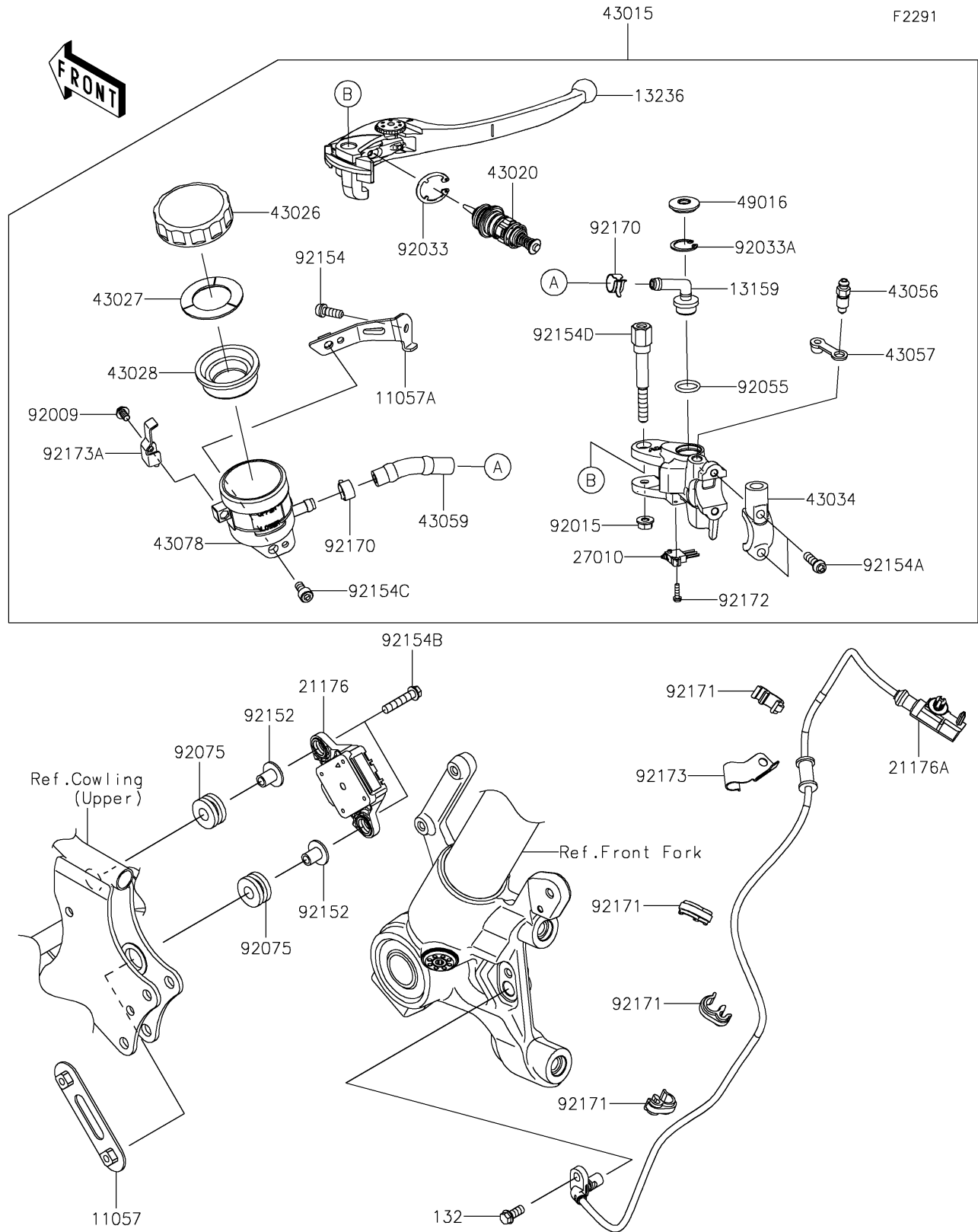


2019 VERSYS® 1000 SE LT+ PARTS DIAGRAM

Front Master Cylinder



2019 VERSYS® 1000 SE LT+ PARTS LIST

Front Master Cylinder

ITEM NAME	PART NUMBER	QUANTITY
BRACKET,SENSOR (Ref # 11057)	11057-0381	1
BRACKET,RESERVOIR (Ref # 11057A)	11057-1314	1
CONNECTOR (Ref # 13159)	13159-1061	1
BOLT-FLANGED-SMALL,6X14 (Ref # 132)	132BB0614	1
LEVER-COMP,FRONT BRAKE (Ref # 13236)	13236-0814	1
SENSOR,INERTIAL (Ref # 21176)	21176-0878	1
SENSOR,SPEED,FR (Ref # 21176A)	21176-0880	1
SWITCH,BRAKE (Ref # 27010)	27010-0915	1
CYLINDER-ASSY-MASTER,FR (Ref # 43015)	43015-0748	1
PISTON-COMP-BRAKE (Ref # 43020)	43020-0010	1
CAP-BRAKE (Ref # 43026)	43026-1051	1
PLATE-DIAPHRAGM (Ref # 43027)	43027-1051	1
DIAPHRAGM,MASTER CYLINDER (Ref # 43028)	43028-1057	1
HOLDER-BRAKE,MASTER CYLINDER (Ref # 43034)	43034-0057	1
BREATHER-BRAKE (Ref # 43056)	43056-1056	1
CAP-BREATHER (Ref # 43057)	43057-1001	1
HOSE-BRAKE (Ref # 43059)	43059-1561	1
RESERVOIR (Ref # 43078)	43078-0591	1
COVER-SEAL (Ref # 49016)	49016-1147	1
SCREW (Ref # 92009)	92009-1570	1
NUT,FLANGED,6MM,BLACK (Ref # 92015)	92015-1233	1
RING-SNAP (Ref # 92033)	92033-0034	1
RING-SNAP,20.5MM (Ref # 92033A)	92033-1186	1
RING-O,14.8X2.4 (Ref # 92055)	92055-0741	1
DAMPER,10X24X12 (Ref # 92075)	92075-1690	2
COLLAR,6.3X9.5X14.1 (Ref # 92152)	92152-1847	2
BOLT,SOCKET,6X16 (Ref # 92154)	92154-1454	1
BOLT,SOCKET,6X22 (Ref # 92154A)	92154-1724	2
BOLT,FLANGED,6X30 (Ref # 92154B)	92154-1857	2

2019 VERSYS® 1000 SE LT+ PARTS LIST

Front Master Cylinder

ITEM NAME	PART NUMBER	QUANTITY
BOLT,SOCKET,6X8 (Ref # 92154C)	92154-2914	1
BOLT,FR M/C PIVOT (Ref # 92154D)	92154-3824	1
CLAMP,HOSE (Ref # 92170)	92170-1091	2
CLAMP,BRAKE HOSE (Ref # 92171)	92171-1819	4
SCREW (Ref # 92172)	92172-1243	1
CLAMP (Ref # 92173)	92173-0801	1
CLAMP (Ref # 92173A)	92173-1790	1