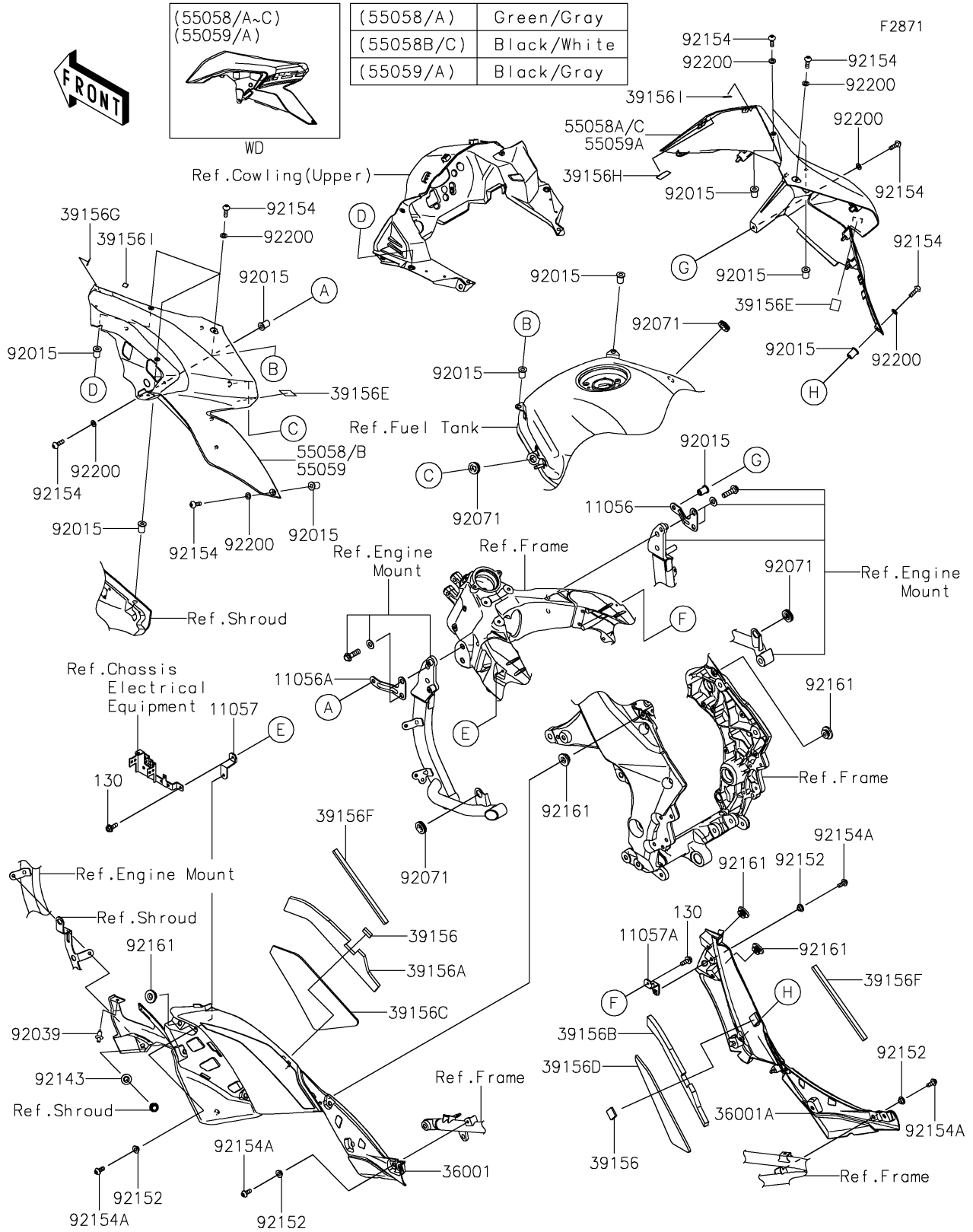


# 2019 VERSYS® 1000 SE LT+ PARTS DIAGRAM

Cowling(Center)



## 2019 VERSYS® 1000 SE LT+ PARTS LIST

Cowling(Center)

ITEM NAME	PART NUMBER	QUANTITY
BRACKET,SIDE COVER,RH,FR (Ref # 11056)	11056-1119	1
BRACKET,SIDE COVER,LH,FR (Ref # 11056A)	11056-1120	1
BRACKET,LH (Ref # 11057)	11057-1700	1
BRACKET,RH (Ref # 11057A)	11057-1701	1
BOLT-FLANGED,5X14 (Ref # 130)	130BA0514	2
COVER-SIDE,LH (Ref # 36001)	36001-0691	1
COVER-SIDE,RH (Ref # 36001A)	36001-0692	1
PAD,18X23,T5 (Ref # 39156)	39156-0810	2
PAD,SIDE COVER,LH,UPP (Ref # 39156A)	39156-2408	1
PAD,SIDE COVER,RH,UPP (Ref # 39156B)	39156-2409	1
PAD,SIDE COVER,LH,LWR (Ref # 39156C)	39156-2439	1
PAD,SIDE COVER,RH,LWR (Ref # 39156D)	39156-2440	1
PAD,35X25X0.2 (Ref # 39156E)	39156-2449	2
PAD,8X210X10 (Ref # 39156F)	39156-2454	2
PAD,21X11X0.2 (Ref # 39156G)	39156-2473	1
PAD,21X11X0.2 (Ref # 39156H)	39156-2474	1
PAD,15X5X0.2 (Ref # 39156I)	39156-2475	2
COWLING,SIDE,LH,M.F.S.BLK+WHT (Ref # 55058B)	55058-5337-J11	1
COWLING,SIDE,RH,M.F.S.BLK+WHT (Ref # 55058C)	55058-5338-J11	1
NUT,WELL,5MM (Ref # 92015)	92015-1757	10
RIVET (Ref # 92039)	92039-0068	1
GROMMET (Ref # 92071)	92071-1043	4
COLLAR (Ref # 92143)	92143-1087	1
COLLAR (Ref # 92152)	92152-0451	4
BOLT,SOCKET,5X16 (Ref # 92154)	92154-0209	10
BOLT,SOCKET,5X12 (Ref # 92154A)	92154-1421	4
DAMPER (Ref # 92161)	92161-1531	6
WASHER,5.2X10X1.0 (Ref # 92200)	92200-1820	10