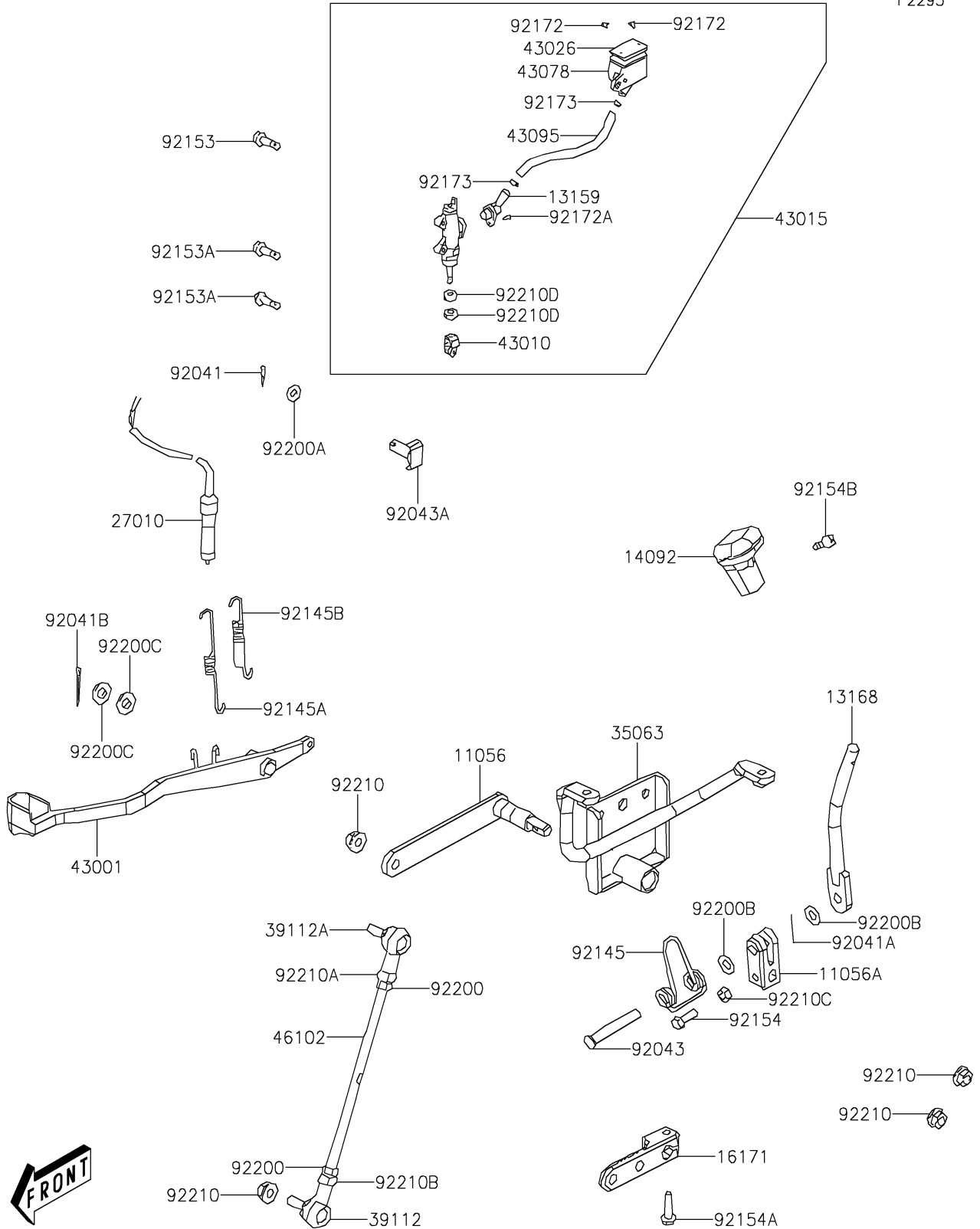


2021 BRUTE FORCE® 300 PARTS DIAGRAM

Rear Master Cylinder

F2293



2021 BRUTE FORCE® 300 PARTS LIST

Rear Master Cylinder

ITEM NAME	PART NUMBER	QUANTITY
BRACKET,CHANGE LEVER (Ref # 11056)	11056-Y006	1
BRACKET,CHANGE LEVER (Ref # 11056A)	11056-Y009	1
CONNECTOR,RR MASTER CYLINDER (Ref # 13159)	13159-Y001	1
LEVER,CHANGE (Ref # 13168)	13168-Y001	1
COVER,CHANGE LEVER (Ref # 14092)	14092-Y017	1
LINK,CHANGE LEVER (Ref # 16171)	16171-Y001	1
SWITCH,BRAKE (Ref # 27010)	27010-Y006	1
STAY,CHANGE LEVER (Ref # 35063)	35063-Y008	1
RODEND-TIE,RH (Ref # 39112)	39112-Y007	1
RODEND-TIE,LH (Ref # 39112A)	39112-Y008	1
LEVER-BRAKE,PEDAL (Ref # 43001)	43001-Y001	1
ROD-ASSY-BRAKE (Ref # 43010)	43010-Y001	1
CYLINDER-ASSY-MASTER,RR (Ref # 43015)	43015-Y004	1
CAP-BRAKE (Ref # 43026)	43026-Y003	1
RESERVOIR,RR MASTER CYLINDER (Ref # 43078)	43078-Y001	1
HOSE-BRAKE,RR MASTER CYLINDER (Ref # 43095)	43095-Y008	1
ROD,CHANGE LEVER (Ref # 46102)	46102-Y001	1
COTTER,2X12 (Ref # 92041)	92041-Y001	1
COTTER,2X15 (Ref # 92041A)	92041-Y002	1
COTTER,2.5X30 (Ref # 92041B)	92041-Y003	1
PIN,CHANGE LEVER (Ref # 92043)	92043-Y020	1
PIN (Ref # 92043A)	92043-Y021	1
SPRING,SHIFT (Ref # 92145)	92145-Y037	1
SPRING,STOP (Ref # 92145A)	92145-Y038	1
SPRING,BRAKE PEDAL (Ref # 92145B)	92145-Y039	1
BOLT,FLANGE,6X16 (Ref # 92153)	92153-Y025	1
BOLT,FLANGE,6X22 (Ref # 92153A)	92153-Y026	2
BOLT,FLANGE,6X16 (Ref # 92154)	92154-Y134	1
BOLT,HEX,6X20 (Ref # 92154A)	92154-Y138	1

2021 BRUTE FORCE[®] 300 PARTS LIST

Rear Master Cylinder

ITEM NAME	PART NUMBER	QUANTITY
BOLT,SOCKET,5X12 (Ref # 92154B)	92154-Y176	1
SCREW,4X40 (Ref # 92172)	92172-Y045	2
SCREW,4X12 (Ref # 92172A)	92172-Y046	1
CLAMP,BRAKE HOSE (Ref # 92173)	92173-Y022	2
WASHER,8MM (Ref # 92200)	92200-Y019	2
WASHER,7X12 (Ref # 92200A)	92200-Y043	1
WASHER,8MM (Ref # 92200B)	92200-Y044	2
WASHER,14X26X2.3 (Ref # 92200C)	92200-Y045	2
NUT,8MM (Ref # 92210)	92210-Y028	4
NUT,HEX,8MM (Ref # 92210A)	92210-Y048	1
NUT,8MM (Ref # 92210B)	92210-Y075	1
NUT,HEX,6MM (Ref # 92210C)	92210-Y078	1
NUT,HEX,8MM (Ref # 92210D)	92210-Y079	2