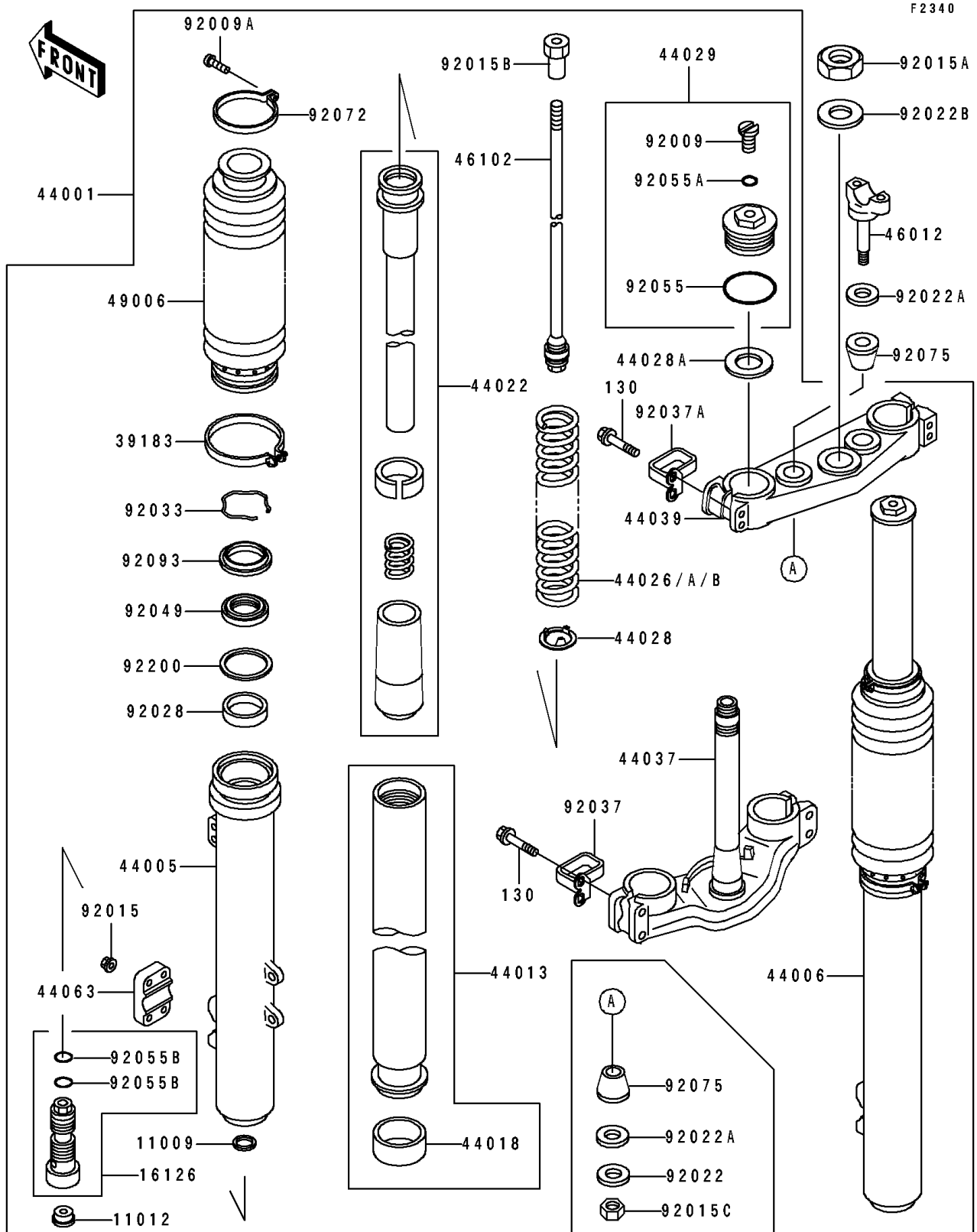


1989 KX500 PARTS DIAGRAM

Front Fork(KX500-E1)



1989 KX500 PARTS LIST

Front Fork(KX500-E1)

ITEM NAME	PART NUMBER	QUANTITY
GASKET (Ref # 11009)	11009-1791	2
CAP,FORK CYLINDER (Ref # 11012)	11012-1381	2
VALVE (Ref # 16126)	16126-1221	2
BAND-ASSY,BOOT (Ref # 39183)	39183-1056	2
FORK-FRONT (Ref # 44001)	44001-1730	1
PIPE-LEFT FORK OUTER (Ref # 44005)	44005-1289	1
PIPE-RIGHT FORK OUTER (Ref # 44006)	44006-1286	1
PIPE-FORK INNER (Ref # 44013)	44013-1290	2
PISTON-FORK,INNER PIPE (Ref # 44018)	44018-1055	2
CYLINDER-FORK (Ref # 44022)	44022-1237	2
SPRING-FRONT FORK,K=0.38 (Ref # 44026)	44026-1424	2
SPRING-FRONT FORK,K=0.39 (Ref # 44026A)	44026-1425	2
SPRING-FRONT FORK,K=0.40 (Ref # 44026B)	44026-1427	2
GUIDE-FORK SPRING (Ref # 44028)	44028-1066	2
GUIDE-FORK SPRING (Ref # 44028A)	44028-1067	2
SEAT-FORK SPRING (Ref # 44029)	44029-1138	2
HOLDER-FORK UNDER (Ref # 44037)	44037-1257	1
HOLDER-FORK UPPER (Ref # 44039)	44039-1192	1
HOLDER-FRONT AXLE (Ref # 44063)	44063-1056	2
HOLDER-HANDLE,LWR (Ref # 46012)	46012-1192	2
ROD,FORK (Ref # 46102)	46102-1271	2
BOOT,FORK (Ref # 49006)	49006-1256	2
SCREW (Ref # 92009)	92009-1568	2
SCREW,3.5X10 (Ref # 92009A)	92009-1573	2
NUT,FLANGED,6MM (Ref # 92015)	92015-1078	8
NUT,STEERING STEM,22MM (Ref # 92015A)	92015-1653	1
NUT (Ref # 92015B)	92015-1776	2
NUT,LOCK,10MM (Ref # 92015C)	92019-021	2
WASHER,10.2X28X2 (Ref # 92022)	92022-1088	2

1989 KX500 PARTS LIST

Front Fork(KX500-E1)

ITEM NAME	PART NUMBER	QUANTITY
WASHER (Ref # 92022A)	92022-1737	4
WASHER,STEERING STEM (Ref # 92022B)	92022-1873	1
BUSHING (Ref # 92028)	92028-1570	2
RING-SNAP (Ref # 92033)	92033-1264	2
CLAMP (Ref # 92037)	92037-1627	1
CLAMP (Ref # 92037A)	92037-1628	1
SEAL-OIL (Ref # 92049)	92049-1341	2
RING-O,TUBE ASSY (Ref # 92055)	92055-1140	2
RING-O (Ref # 92055A)	92055-1441	2
RING-O (Ref # 92055B)	92055-1462	4
BAND (Ref # 92072)	92072-1247	2
DAMPER (Ref # 92075)	92075-1776	4
SEAL (Ref # 92093)	92093-1281	2
WASHER (Ref # 92200)	92200-1006	2
BOLT-FLANGED,8X40 (Ref # 130)	130G0840	8