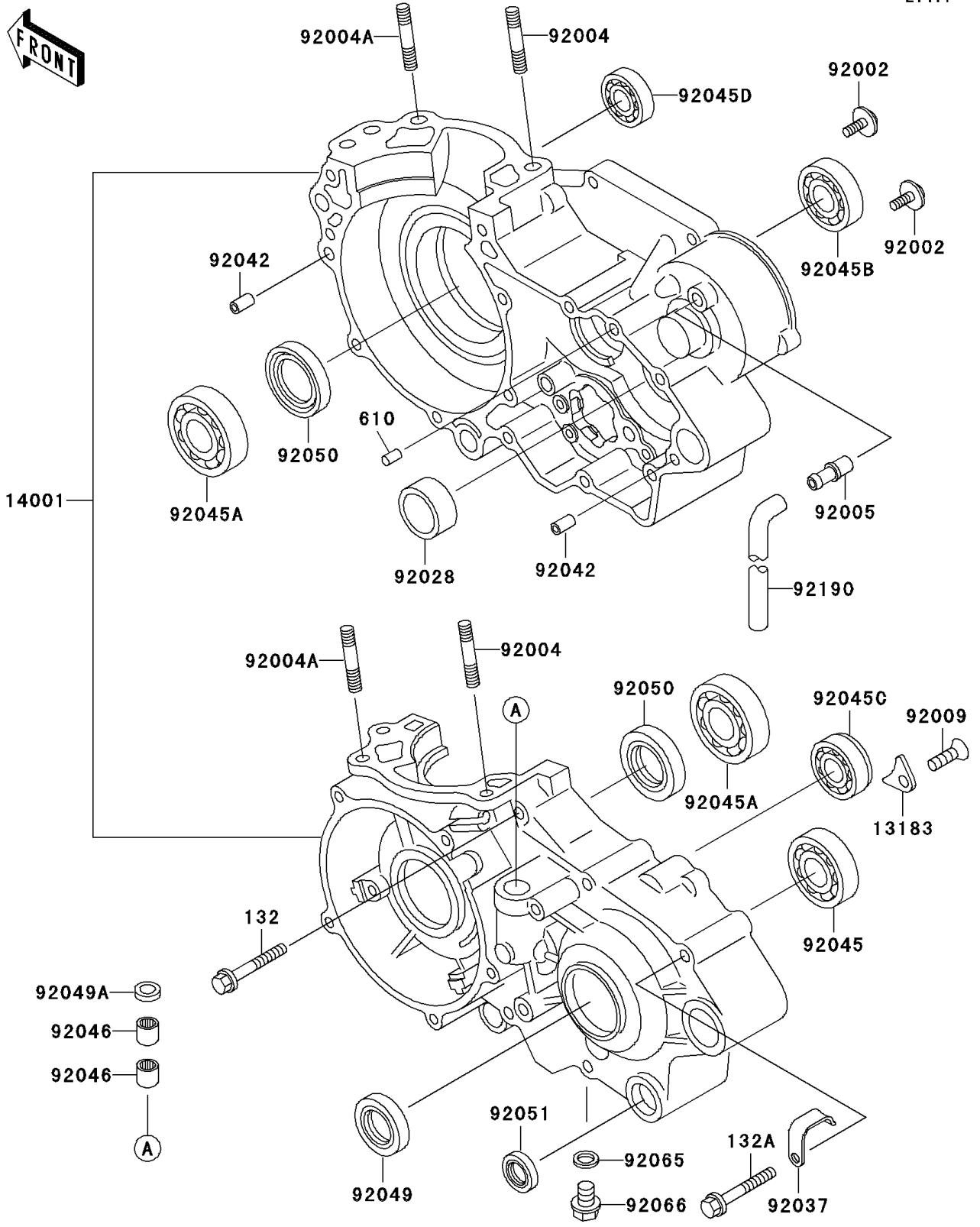


2001 KX500 PARTS DIAGRAM

Crankcase



2001 KX500 PARTS LIST

Crankcase

| ITEM NAME | PART NUMBER | QUANTITY |
|---|-------------|----------|
| BOLT-FLANGED-SMALL (Ref # 132) | 132G0650 | 4 |
| BOLT-FLANGED-SMALL (Ref # 132A) | 132G0660 | 8 |
| ROLLER,4X8 (Ref # 610) | 610A0408 | 1 |
| PLATE (Ref # 13183) | 13183-1182 | 1 |
| SET-CRANKCASE (Ref # 14001) | 14001-5258 | 1 |
| BOLT,6X16 (Ref # 92002) | 92002-1659 | 2 |
| STUD,10X55 (Ref # 92004) | 92004-1176 | 2 |
| STUD,10X47 (Ref # 92004A) | 92004-1223 | 2 |
| FITTING,BREATHER (Ref # 92005) | 92005-1127 | 1 |
| SCREW,6X10 (Ref # 92009) | 92009-1563 | 1 |
| BUSHING,26X35X14 (Ref # 92028) | 92028-131 | 1 |
| CLAMP,HARNESS (Ref # 92037) | 92037-1318 | 1 |
| PIN,DOWEL,6.3X8X14 (Ref # 92042) | 92042-007 | 2 |
| BEARING-BALL,#6305 (Ref # 92045) | 92045-1011 | 1 |
| BEARING-BALL,6306SH2,9TC (Ref # 92045A) | 92045-1027 | 2 |
| BEARING-BALL,63/22T2C3 (Ref # 92045B) | 92045-1134 | 1 |
| BEARING-BALL (Ref # 92045C) | 92045-1233 | 1 |
| BEARING-BALL,608MC3 (Ref # 92045D) | 92045-1305 | 1 |
| BEARING-NEEDLE,HK1210 (Ref # 92046) | 92046-1010 | 2 |
| SEAL-OIL,TC32457 (Ref # 92049) | 92049-1159 | 1 |
| SEAL-OIL (Ref # 92049A) | 92049-1262 | 1 |
| SEAL-OIL (Ref # 92050) | 92050-057 | 2 |
| SEAL-OIL,TB13225.5 (Ref # 92051) | 92051-005 | 1 |
| GASKET,10.5X16X1 (Ref # 92065) | 92065-058 | 1 |
| PLUG,DRAIN (Ref # 92066) | 92066-1437 | 1 |
| TUBE,6X9X330 (Ref # 92190) | 92190-1116 | 1 |