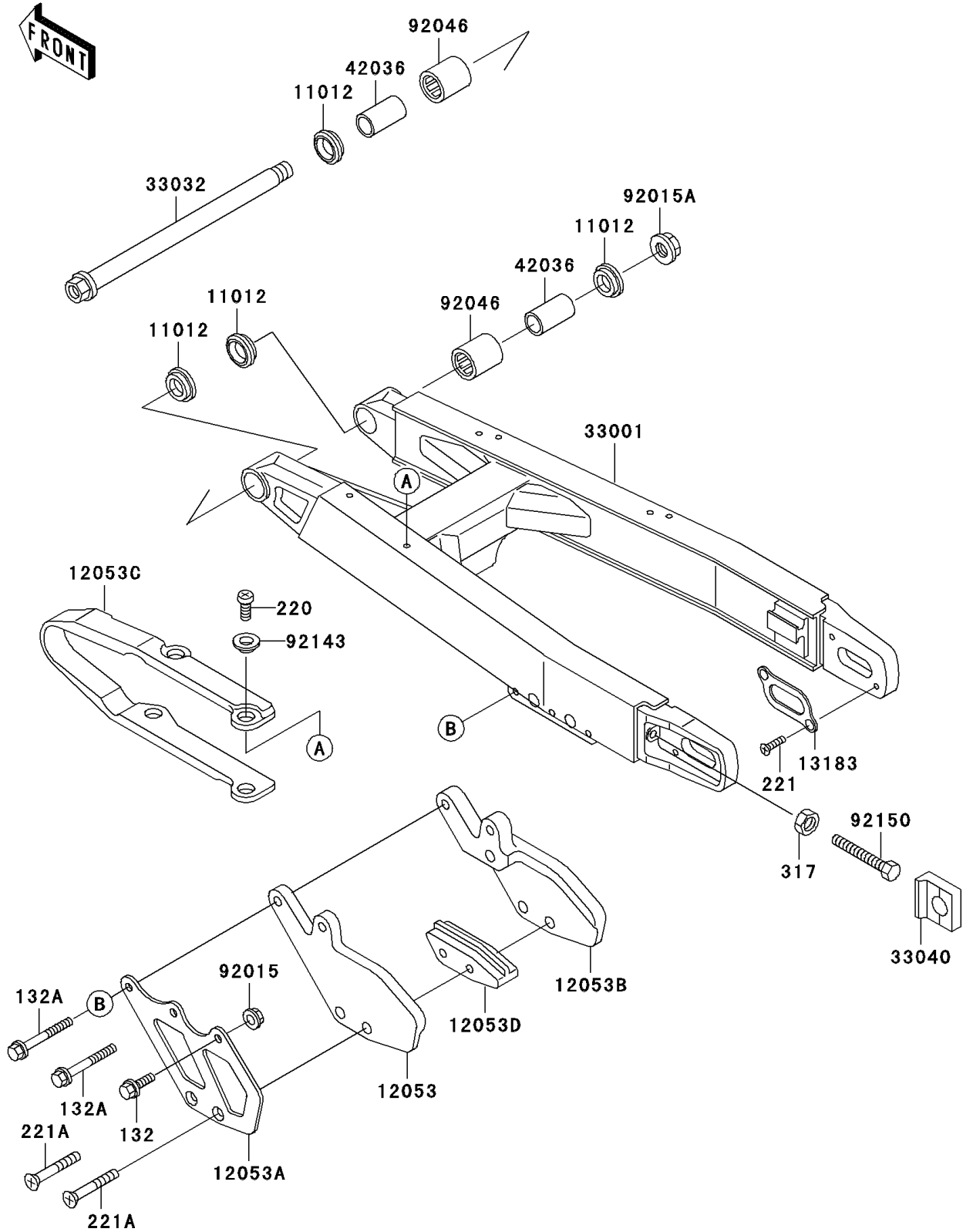


# 2001 KX500 PARTS DIAGRAM

Swingarm

F2141



## 2001 KX500 PARTS LIST

### Swingarm

| ITEM NAME                                  | PART NUMBER   | QUANTITY |
|--|---------------|----------|
| BOLT-FLANGED-SMALL (Ref # 132)             | 132G0616      | 1        |
| BOLT-FLANGED-SMALL (Ref # 132A)            | 132G0635      | 2        |
| SCREW-PAN-CROS,6X8 (Ref # 220)             | 220B0608      | 4        |
| SCREW-CSK-CROS (Ref # 221)                 | 221B0510      | 4        |
| SCREW-CSK-CROS,6X45 (Ref # 221A)           | 221B0645      | 2        |
| NUT-HEX-SMALL,8MM (Ref # 317)              | 317G0800      | 2        |
| CAP,SWING ARM (Ref # 11012)                | 11012-1259    | 4        |
| GUIDE-CHAIN,RR,INSIDE (Ref # 12053)        | 12053-1234    | 1        |
| GUIDE-CHAIN,RR,OUTSIDE (Ref # 12053A)      | 12053-1235    | 1        |
| GUIDE-CHAIN,RR,OUTSIDE (Ref # 12053B)      | 12053-1236    | 1        |
| GUIDE-CHAIN,FR (Ref # 12053C)              | 12053-1240    | 1        |
| GUIDE-CHAIN,DRIVE,RR,INSIDE (Ref # 12053D) | 12053-1270    | 1        |
| PLATE (Ref # 13183)                        | 13183-1546    | 2        |
| ARM-COMP-SWING,SILVER (Ref # 33001)        | 33001-1496-TX | 1        |
| SHAFT-SWING ARM (Ref # 33032)              | 33032-1137    | 1        |
| ADJUSTER-CHAIN (Ref # 33040)               | 33040-1106    | 2        |
| SLEEVE,SWING ARM (Ref # 42036)             | 42036-1064    | 2        |
| NUT,FLANGED,6MM (Ref # 92015)              | 92015-1078    | 1        |
| NUT,14MM (Ref # 92015A)                    | 92015-1407    | 1        |
| BEARING-NEEDLE,TA2030Z (Ref # 92046)       | 92046-1128    | 2        |
| COLLAR (Ref # 92143)                       | 92143-1156    | 4        |
| BOLT,8X55 (Ref # 92150)                    | 92150-1385    | 2        |