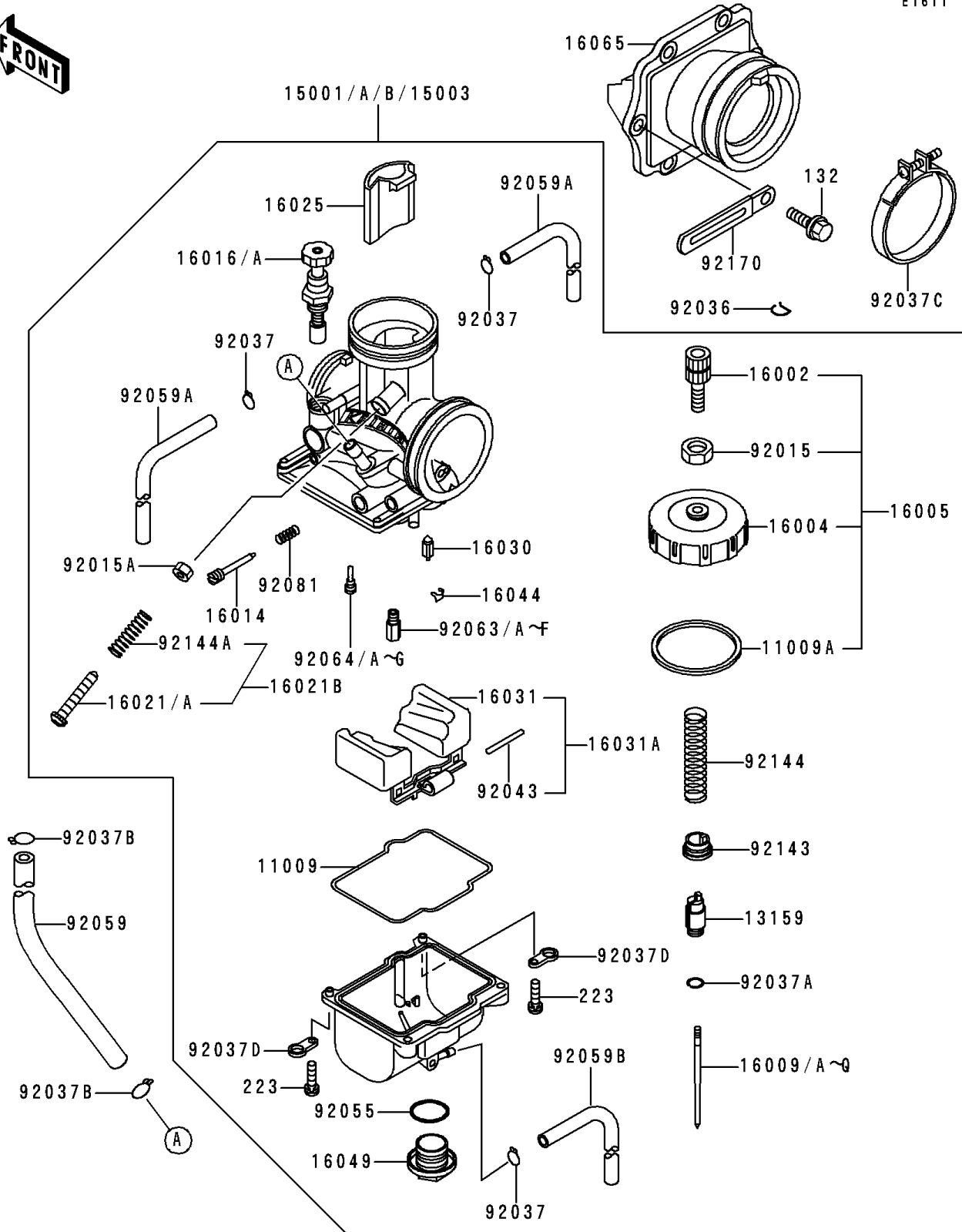


# 1992 KX500 PARTS DIAGRAM

Carburetor

E1611



# 1992 KX500 PARTS LIST

## Carburetor

| ITEM NAME                              | PART NUMBER | QUANTITY |
|--|-------------|----------|
| GASKET,FLOAT CHAMBER (Ref # 11009)     | 11009-1716  | 1        |
| GASKET,CHAMBER CAP (Ref # 11009A)      | 11009-1717  | 1        |
| CONNECTOR,THROTTLE CABLE (Ref # 13159) | 13159-1063  | 1        |
| CARBURETOR-ASSY (Ref # 15001)          | 15001-1563  | 1        |
| ADJUSTER-CABLE (Ref # 16002)           | 16002-1061  | 1        |
| CAP-CHAMBER,MIXING (Ref # 16004)       | 16004-1061  | 1        |
| NEEDLE-JET,N82K (Ref # 16009)          | 16009-1578  | 1        |
| NEEDLE-JET,N82L (Ref # 16009A)         | 16009-1579  | 1        |
| NEEDLE-JET,N82M (Ref # 16009B)         | 16009-1580  | 1        |
| NEEDLE-JET,N82N (Ref # 16009C)         | 16009-1581  | 1        |
| NEEDLE-JET,N82P (Ref # 16009D)         | 16009-1582  | 1        |
| SCREW-PILOT AIR (Ref # 16014)          | 16014-1058  | 1        |
| PLUNGER,STARTER (Ref # 16016)          | 16016-1075  | 1        |
| SCREW-THROTTLE STOP (Ref # 16021)      | 16021-1124  | 1        |
| VALVE-THROTTLE,CA7 (Ref # 16025)       | 16025-1163  | 1        |
| VALVE-FLOAT (Ref # 16030)              | 16030-1057  | 1        |
| FLOAT (Ref # 16031)                    | 16031-1067  | 1        |
| CLAMP,FLOAT VALVE (Ref # 16044)        | 16044-007   | 1        |
| COVER-MAIN JET (Ref # 16049)           | 16049-1051  | 1        |
| HOLDER-CARBURETOR (Ref # 16065)        | 16065-1180  | 1        |
| NUT,CABLE ADJUST LOCK (Ref # 92015)    | 92015-1574  | 1        |
| NUT,THROTTLE STOP SCREW (Ref # 92015A) | 92015-1707  | 1        |
| RING-SNAP (Ref # 92036)                | 92036-018   | 1        |
| CLAMP,TUBE (Ref # 92037)               | 92037-1396  | 3        |
| CLAMP,JET NEEDLE (Ref # 92037A)        | 92037-1401  | 1        |
| CLAMP,TUBE (Ref # 92037B)              | 92037-147   | 2        |
| CLAMP,55MM (Ref # 92037C)              | 92037-1486  | 1        |
| CLAMP,HOSE (Ref # 92037D)              | 92037-1969  | 2        |
| PIN,FLOAT (Ref # 92043)                | 92043-1207  | 1        |

# 1992 KX500 PARTS LIST

## Carburetor

| ITEM NAME                           | PART NUMBER | QUANTITY |
|-------------------------------------|-------------|----------|
| RING-O,MAIN JET COVER (Ref # 92055) | 92055-1167  | 1        |
| TUBE (Ref # 92059)                  | 92059-1888  | 1        |
| TUBE,4X7X480 (Ref # 92059A)         | 92059-1898  | 2        |
| TUBE,3.5X6.5X390 (Ref # 92059B)     | 92059-1899  | 1        |
| JET-MAIN,#162 (Ref # 92063)         | 92063-1369  | 1        |
| JET-MAIN,#165 (Ref # 92063A)        | 92063-1370  | 1        |
| JET-MAIN,#168 (Ref # 92063B)        | 92063-1371  | 1        |
| JET-MAIN,#170 (Ref # 92063C)        | 92063-1372  | 1        |
| JET-MAIN,#172 (Ref # 92063D)        | 92063-1373  | 1        |
| JET-MAIN,#188 (Ref # 92063F)        | 92063-1379  | 1        |
| BOLT-FLANGED-SMALL (Ref # 132)      | 132G0620    | 6        |
| SCREW-PAN-WS-CROS (Ref # 223)       | 223C0416    | 4        |
| JET-PILOT,#55 (Ref # 92064A)        | 92064-1145  | 1        |
| JET-PILOT,#58 (Ref # 92064C)        | 92064-1146  | 1        |
| JET-PILOT,#60 (Ref # 92064D)        | 92064-1147  | 1        |
| JET-PILOT,#62 (Ref # 92064F)        | 92064-1148  | 1        |
| JET-PILOT,#65 (Ref # 92064G)        | 92064-1149  | 1        |
| SPRING,ADJUST SCREW (Ref # 92081)   | 92081-1555  | 1        |
| COLLAR,THROTTLE VALVE (Ref # 92143) | 92143-1201  | 1        |
| SPRING,THROTTLE VALVE (Ref # 92144) | 92144-1494  | 1        |
| CLAMP (Ref # 92170)                 | 92170-1514  | 1        |