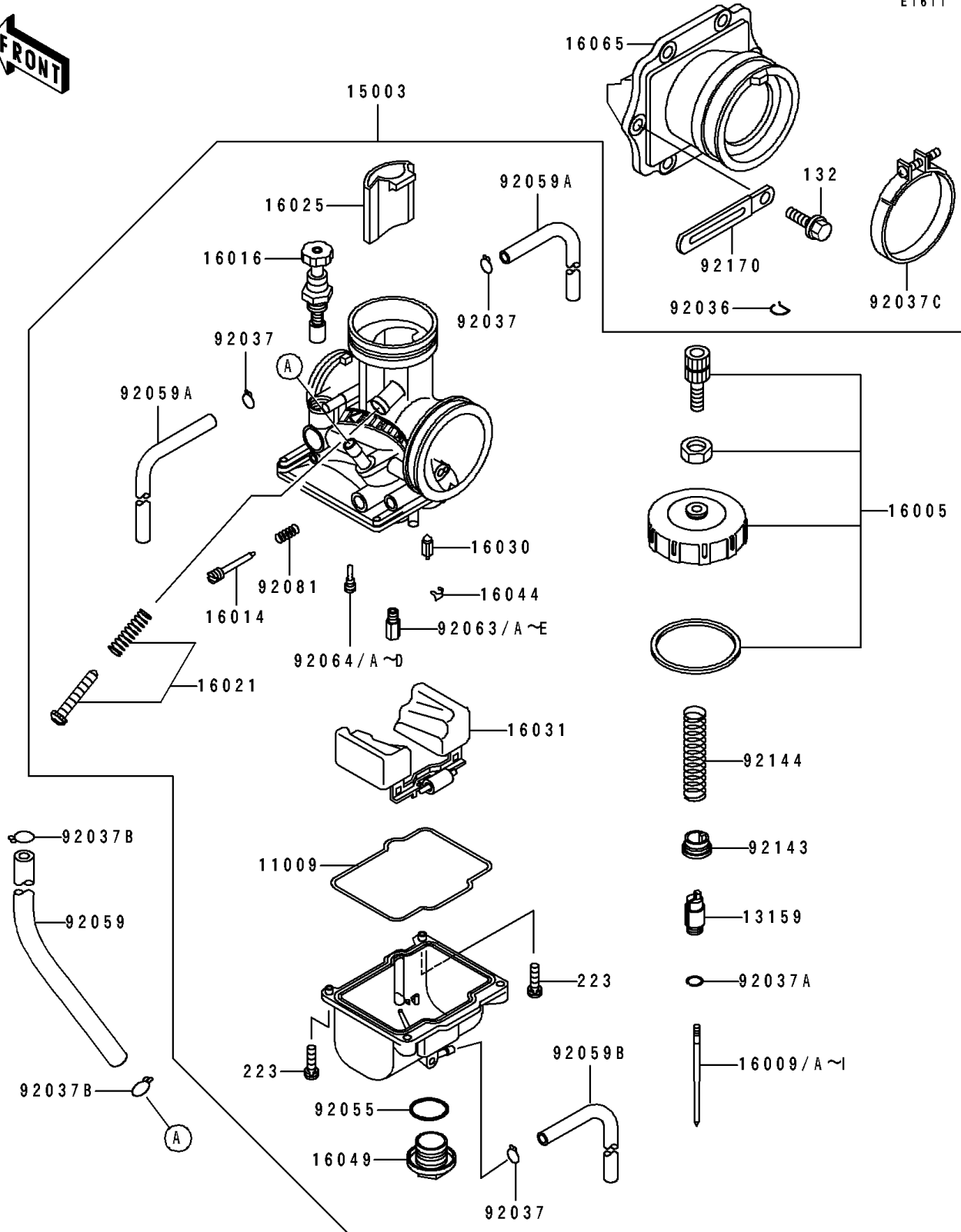


# 1997 KX500 PARTS DIAGRAM

Carburetor

E1611



# 1997 KX500 PARTS LIST

## Carburetor

ITEM NAME	PART NUMBER	QUANTITY
GASKET,FLOAT CHAMBER (Ref # 11009)	11009-1716	1
CONNECTOR,THROTTLE CABLE (Ref # 13159)	13159-1063	1
CARBURETOR-ASSY (Ref # 15003)	15003-1250	1
TOP-CHAMBER (Ref # 16005)	16005-1068	1
NEEDLE-JET,N82K (Ref # 16009)	16009-1578	1
NEEDLE-JET,N82L (Ref # 16009A)	16009-1579	1
NEEDLE-JET,N82M (Ref # 16009B)	16009-1580	1
NEEDLE-JET,N82N (Ref # 16009C)	16009-1581	1
NEEDLE-JET,N82P (Ref # 16009D)	16009-1582	1
NEEDLE-JET,N89Z (Ref # 16009E)	16009-1609	1
NEEDLE-JET,N89A (Ref # 16009F)	16009-1610	1
NEEDLE-JET,N89B (Ref # 16009G)	16009-1611	1
NEEDLE-JET,N89C (Ref # 16009H)	16009-1612	1
NEEDLE-JET,N89D (Ref # 16009I)	16009-1613	1
SCREW-PILOT AIR (Ref # 16014)	16014-1058	1
PLUNGER (Ref # 16016)	16016-1085	1
SCREW-THROTTLE STOP (Ref # 16021)	16021-1198	1
VALVE-THROTTLE,CA7 (Ref # 16025)	16025-1163	1
VALVE-FLOAT (Ref # 16030)	16030-1057	1
FLOAT (Ref # 16031)	16031-1084	1
CLAMP,FLOAT VALVE (Ref # 16044)	16044-007	1
COVER-MAIN JET (Ref # 16049)	16049-1051	1
HOLDER-CARBURETOR (Ref # 16065)	16065-1180	1
RING-SNAP (Ref # 92036)	92036-018	1
CLAMP,TUBE (Ref # 92037)	92037-1396	3
CLAMP,JET NEEDLE (Ref # 92037A)	92037-1401	1
CLAMP,TUBE (Ref # 92037B)	92037-147	2
CLAMP,55MM (Ref # 92037C)	92037-1486	1
RING-O,MAIN JET COVER (Ref # 92055)	92055-1167	1

# 1997 KX500 PARTS LIST

## Carburetor

ITEM NAME	PART NUMBER	QUANTITY
TUBE (Ref # 92059)	92059-1888	1
TUBE,4X7X480 (Ref # 92059A)	92059-1898	2
TUBE,3.5X6.5X390 (Ref # 92059B)	92059-1899	1
JET-MAIN,#162 (Ref # 92063)	92063-1369	1
JET-MAIN,#165 (Ref # 92063A)	92063-1370	1
JET-MAIN,#168 (Ref # 92063B)	92063-1371	1
JET-MAIN,#170 (Ref # 92063C)	92063-1372	1
JET-MAIN,#172 (Ref # 92063D)	92063-1373	1
JET-MAIN,#178 (Ref # 92063E)	92063-1375	1
JET-PILOT,#52 (Ref # 92064)	92064-1130	1
JET-PILOT,#55 (Ref # 92064A)	92064-1145	1
JET-PILOT,#58 (Ref # 92064B)	92064-1146	1
JET-PILOT,#60 (Ref # 92064C)	92064-1147	1
JET-PILOT,#62 (Ref # 92064D)	92064-1148	1
SPRING,ADJUST SCREW (Ref # 92081)	92081-1555	1
COLLAR,THROTTLE VALVE (Ref # 92143)	92143-1201	1
SPRING,THROTTLE VALVE (Ref # 92144)	92144-1494	1
CLAMP (Ref # 92170)	92170-1514	1
BOLT-FLANGED-SMALL (Ref # 132)	132G0620	6
SCREW-PAN-WS-CROS (Ref # 223)	223C0416	4