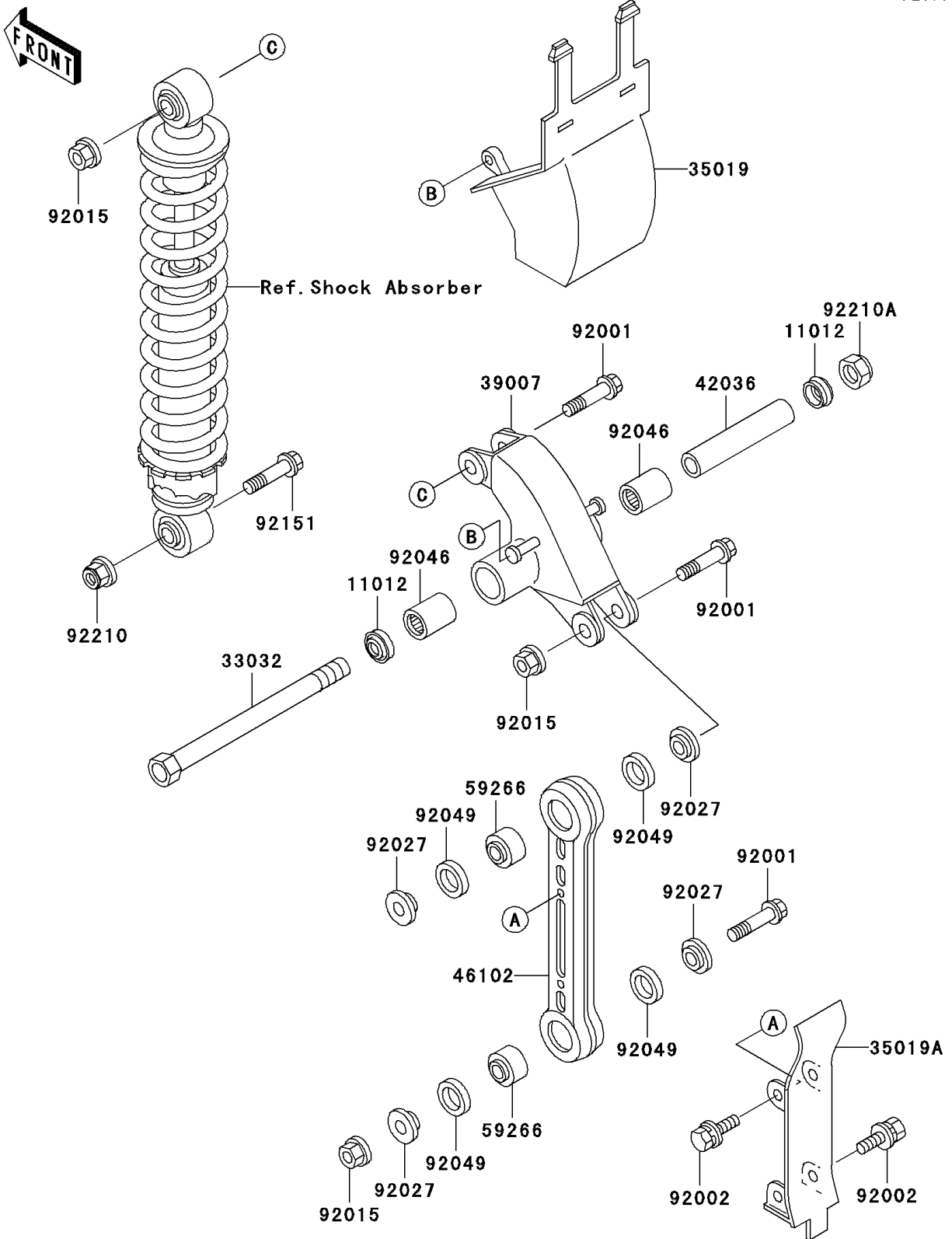


# 2000 KX60 PARTS DIAGRAM

Rear Suspension

F2150



## 2000 KX60 PARTS LIST

### Rear Suspension

| ITEM NAME                                | PART NUMBER | QUANTITY |
|--|-------------|----------|
| CAP (Ref # 11012)                        | 11012-1263  | 2        |
| SHAFT-SUSPENSION ARM,L=168 (Ref # 33032) | 33032-1032  | 1        |
| FLAP,SUSPENSION ARM (Ref # 35019)        | 35019-1046  | 1        |
| FLAP,SUSPENSION ROD (Ref # 35019A)       | 35019-1137  | 1        |
| ARM-SUSP,UNI-TRAK (Ref # 39007)          | 39007-1062  | 1        |
| SLEEVE,SUSPENSION ARM,L=86 (Ref # 42036) | 42036-1068  | 1        |
| ROD,SUSPENSION (Ref # 46102)             | 46102-1125  | 1        |
| JOINT-BALL (Ref # 59266)                 | 59266-1011  | 2        |
| BOLT,FLANGED,10X42 (Ref # 92001)         | 92001-1711  | 3        |
| BOLT,6X14 (Ref # 92002)                  | 92002-1133  | 4        |
| NUT,FLANGED,10MM (Ref # 92015)           | 92015-1415  | 3        |
| COLLAR,SUSPENSION ROD (Ref # 92027)      | 92027-1496  | 4        |
| BEARING-NEEDLE (Ref # 92046)             | 92046-1046  | 2        |
| SEAL-OIL (Ref # 92049)                   | 92049-1098  | 4        |
| BOLT,FLANGED,10X41 (Ref # 92151)         | 92151-1831  | 1        |
| NUT,LOCK,FLANGED,10MM (Ref # 92210)      | 92210-1080  | 1        |
| NUT,LOCK,12MM (Ref # 92210A)             | 92210-1249  | 1        |