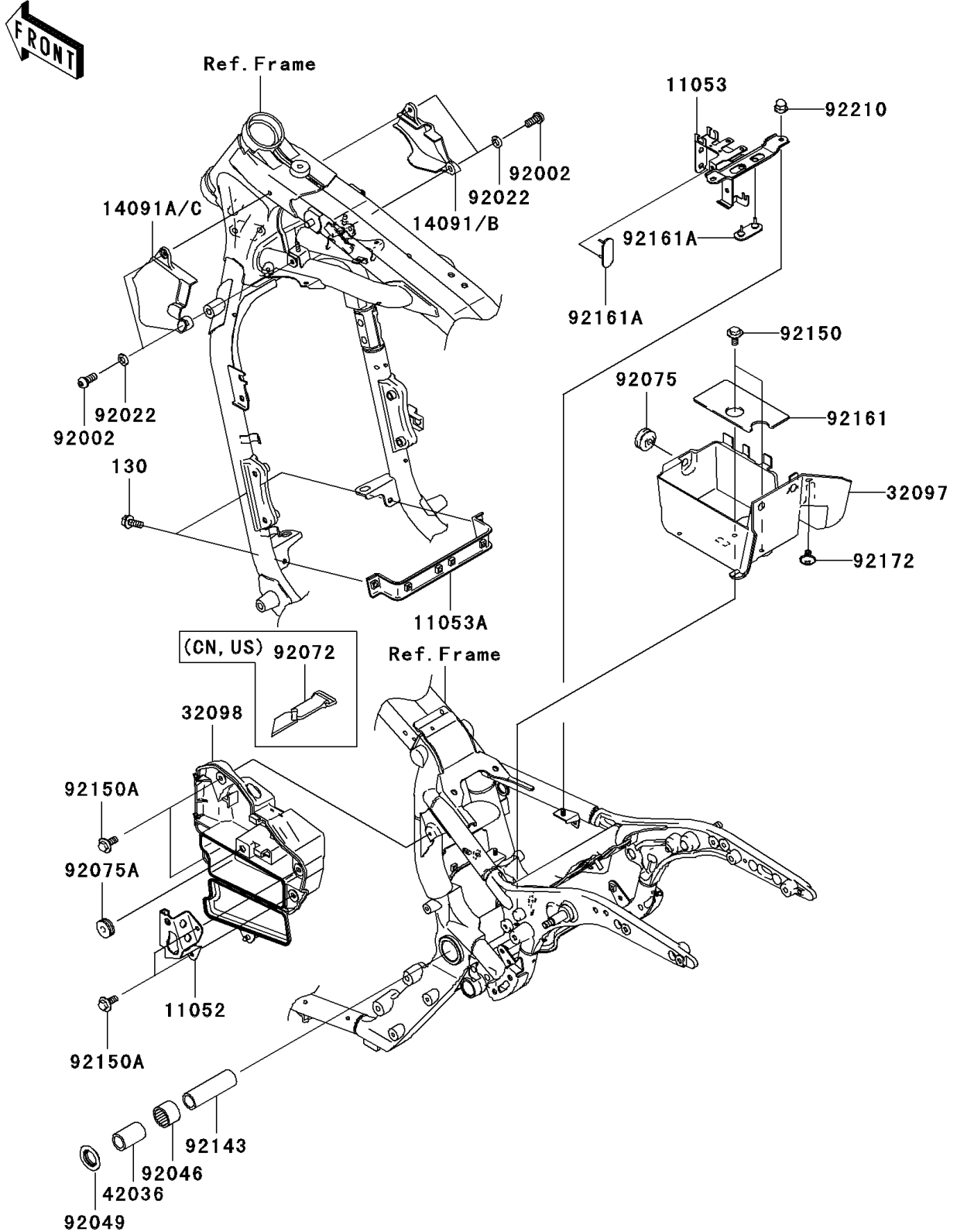


# 2008 Vulcan® 1600 Nomad™ PARTS DIAGRAM

Frame Fittings

F2131



## 2008 Vulcan® 1600 Nomad™ PARTS LIST

### Frame Fittings

| ITEM NAME                             | PART NUMBER | QUANTITY |
|---------------------------------------|-------------|----------|
| BOLT-FLANGED,6X16 (Ref # 130)         | 130J0616    | 2        |
| BRACKET,SIDE COVER LOCK (Ref # 11052) | 11052-1234  | 1        |
| BRACKET,BATTERY BAND (Ref # 11053)    | 11053-0289  | 1        |
| BRACKET,REGULATOR (Ref # 11053A)      | 11053-0434  | 1        |
| COVER,HEAD PIPE,RH (Ref # 14091B)     | 14091-0852  | 1        |
| COVER,HEAD PIPE,LH (Ref # 14091C)     | 14091-0853  | 1        |
| CASE-BATTERY (Ref # 32097)            | 32097-1192  | 1        |
| CASE-TOOL (Ref # 32098)               | 32098-1137  | 1        |
| SLEEVE,L=45 (Ref # 42036)             | 42036-1330  | 2        |
| BOLT,6X14 (Ref # 92002)               | 92002-1700  | 4        |
| WASHER,6.2X11X1.5 (Ref # 92022)       | 92022-183   | 4        |
| BEARING-NEEDLE,BM2824 (Ref # 92046)   | 92046-1202  | 2        |
| SEAL-OIL (Ref # 92049)                | 92049-1181  | 2        |
| DAMPER (Ref # 92075)                  | 92075-1067  | 1        |
| DAMPER (Ref # 92075A)                 | 92075-1629  | 1        |
| COLLAR,20.2X27X90 (Ref # 92143)       | 92143-1878  | 1        |
| BOLT,6X14 (Ref # 92150)               | 92150-1133  | 2        |
| BOLT,6X16 (Ref # 92150A)              | 92150-1198  | 4        |
| DAMPER,BATTERY (Ref # 92161)          | 92161-1097  | 1        |
| DAMPER,BATTERY BAND (Ref # 92161A)    | 92161-1214  | 2        |
| SCREW,6X10 (Ref # 92172)              | 92172-0005  | 2        |
| NUT,CAP,6MM (Ref # 92210)             | 92210-0003  | 2        |
| BAND,L=470 (Ref # 92072)              | 92072-1331  | 1        |