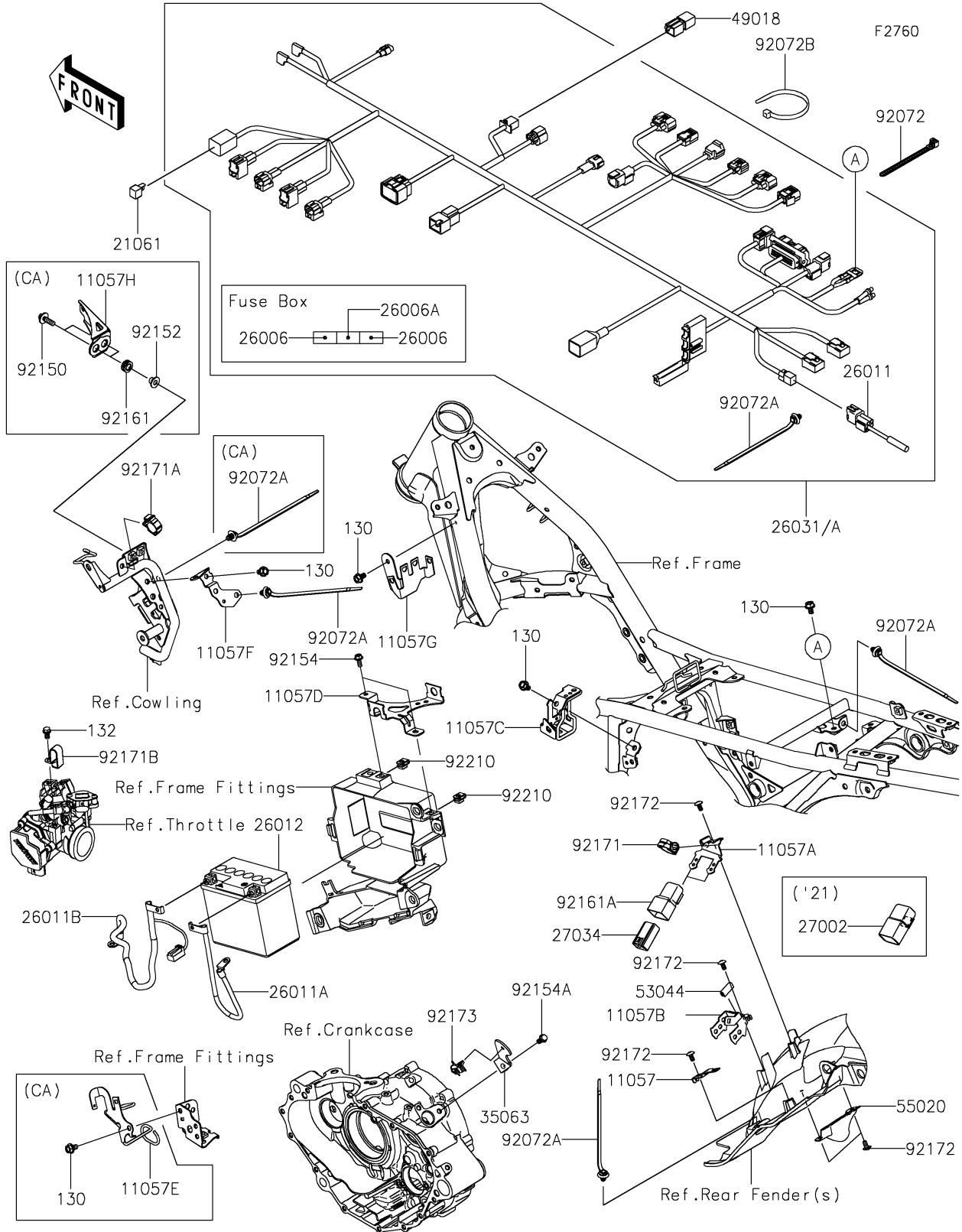


2021 KLX® 230R S PARTS DIAGRAM

Chassis Electrical Equipment



2021 KLX® 230R S PARTS LIST

Chassis Electrical Equipment

ITEM NAME	PART NUMBER	QUANTITY
BRACKET,DIAG (Ref # 11057)	11057-2018	1
BRACKET,RELAY-ASSY (Ref # 11057A)	11057-2019	1
BRACKET,SWITCH (Ref # 11057B)	11057-2020	1
BRACKET,VEHICLE DOWN SENSOR (Ref # 11057C)	11057-2021	1
BRACKET,ECU (Ref # 11057D)	11057-2022	1
BRACKET (Ref # 11057E)	11057-2463	1
BRACKET,ENGINE START SWITCH (Ref # 11057F)	11057-2520	1
BRACKET (Ref # 11057G)	11057-2539	1
BRACKET,REGULATOR (Ref # 11057H)	11057-4104	1
RECTIFIER (Ref # 21061)	21061-1003	1
FUSE,MINI BLADE,15A,BLUE (Ref # 26006)	26006-0001	2
FUSE,MINI BLADE,10A,RED (Ref # 26006A)	26006-1078	1
WIRE-LEAD,DIAG (Ref # 26011)	26011-0858	1
WIRE-LEAD,BATTERY(+) (Ref # 26011A)	26011-1869	1
WIRE-LEAD,BATTERY(-) (Ref # 26011B)	26011-1870	1
BATTERY,YTX5L-BS,12V 4AH (Ref # 26012)	26012-0905	1
HARNESS,MAIN (Ref # 26031)	26031-2807	1
HARNESS,MAIN (Ref # 26031)	26031-2807	1
HARNESS,MAIN (Ref # 26031A)	26031-2836	1
RELAY-ASSY (Ref # 27002)	27002-1086	2
RELAY (Ref # 27034)	27034-0012	1
STAY (Ref # 35063)	35063-1476	1
DIODE (Ref # 49018)	49018-0005	1
TRIM,9X6.5X20 (Ref # 53044)	53044-0596	1
GUARD,OXYGEN SENSOR (Ref # 55020)	55020-2254	1
BAND,L=140 (Ref # 92072)	92072-1293	2
BAND,OS170-FT7(BLACK) (Ref # 92072A)	92072-1414	AR
BAND,L=152 (Ref # 92072B)	92072-3874	1
BOLT,FLANGED,6X20 (Ref # 92150)	92150-1339	2

2021 KLX® 230R S PARTS LIST

Chassis Electrical Equipment

ITEM NAME	PART NUMBER	QUANTITY
COLLAR (Ref # 92152)	92152-2595	2
BOLT,FLANGED,5X12 (Ref # 92154)	92154-1215	2
BOLT,FLANGED,6X12 (Ref # 92154A)	92154-1776	1
DAMPER,8.3X16X6.4 (Ref # 92161)	92161-1848	2
DAMPER (Ref # 92161A)	92161-2290	1
CLAMP,20MM DIA. (Ref # 92171)	92171-0069	1
CLAMP,BRAKE HOSE (Ref # 92171A)	92171-0316	1
CLAMP (Ref # 92171B)	92171-0911	1
SCREW,CROS,5X10 (Ref # 92172)	92172-1255	5
CLAMP (Ref # 92173)	92173-1163	1
NUT,PLATE,5MM (Ref # 92210)	92210-0262	2
BOLT-FLANGED,6X10 (Ref # 130)	130BA0610	5
BOLT-FLANGED,6X10 (Ref # 130)	130BA0610	1
BOLT-FLANGED,6X10 (Ref # 130)	130BA0610	4
BOLT-FLANGED-SMALL,6X10 (Ref # 132)	132BB0610	1