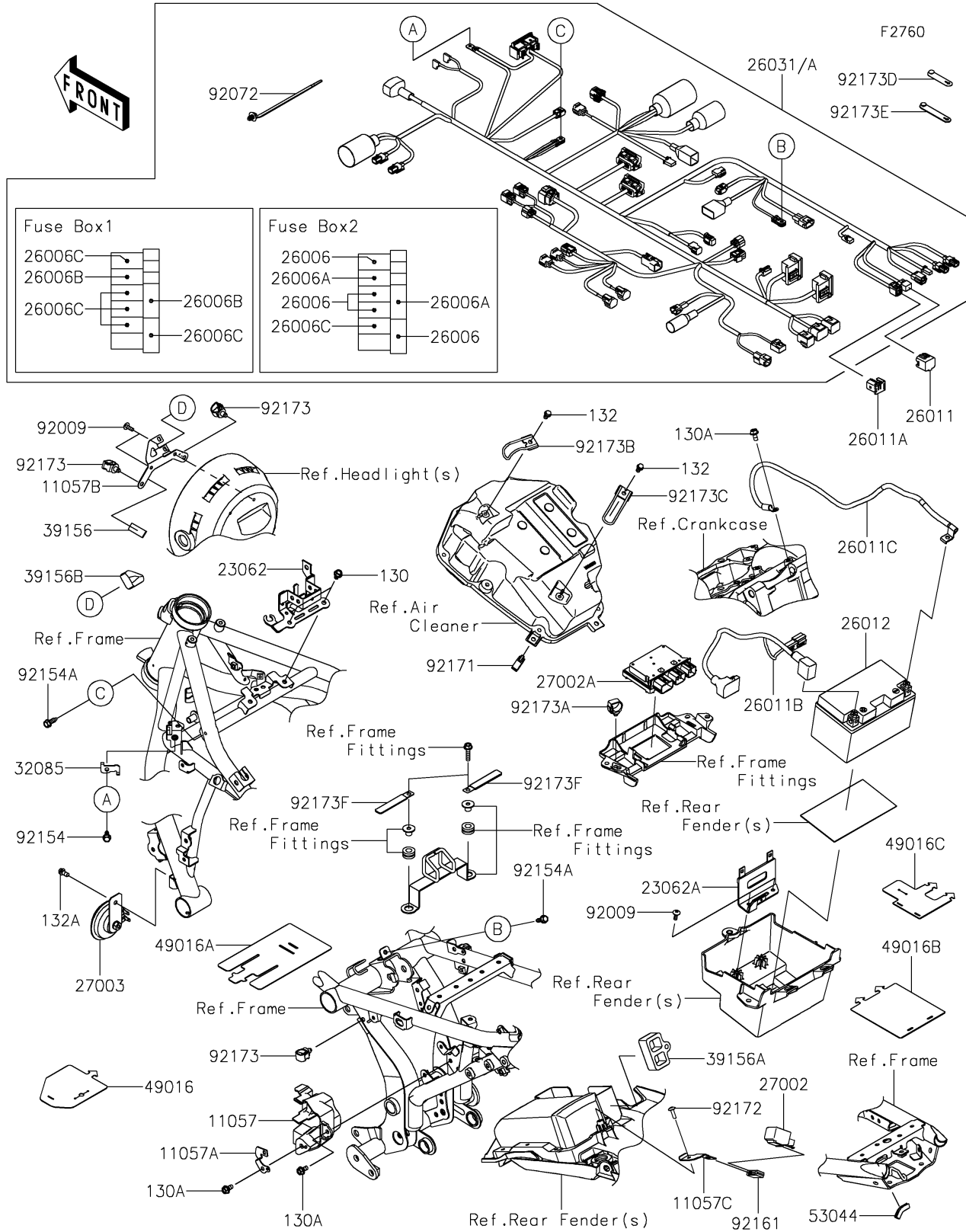


# 2022 Z650RS ABS PARTS DIAGRAM

## Chassis Electrical Equipment



## 2022 Z650RS ABS PARTS LIST

### Chassis Electrical Equipment

ITEM NAME	PART NUMBER	QUANTITY
BRACKET,MAGNETIC SW. (Ref # 11057)	11057-0137	1
BRACKET,COUPLER (Ref # 11057A)	11057-0138	1
BRACKET,SIGNAL LAMP (Ref # 11057B)	11057-7138	1
BRACKET,RELAY (Ref # 11057C)	11057-7590	1
BRACKET-COMP (Ref # 23062)	23062-1318	1
BRACKET-COMP,FUSE BOX (Ref # 23062A)	23062-1339	1
FUSE,MINI BLADE,15A,BLUE (Ref # 26006)	26006-0001	4
FUSE,MINI BLADE,25A,NATURAL (Ref # 26006A)	26006-0020	2
FUSE,MINI BLADE,5A,TAN (Ref # 26006B)	26006-1077	2
FUSE,MINI BLADE,10A,RED (Ref # 26006C)	26006-1078	6
WIRE-LEAD,CONNECTOR COVER (Ref # 26011)	26011-0275	1
WIRE-LEAD,DIAG CONNECTOR (Ref # 26011A)	26011-1901	1
WIRE-LEAD,BATTERY(+) (Ref # 26011B)	26011-1947	1
WIRE-LEAD,BATTERY(-) (Ref # 26011C)	26011-1948	1
BATTERY,YTZ10,12V 8.6AH (Ref # 26012)	26012-0689	1
HARNESS,MAIN (Ref # 26031)	26031-3882	1
HARNESS,MAIN (Ref # 26031A)	26031-3883	1
RELAY-ASSY,SIGNAL LAMP (Ref # 27002)	27002-0006	1
RELAY-ASSY (Ref # 27002A)	27002-0050	1
HORN (Ref # 27003)	27003-0158	1
STOPPER (Ref # 32085)	32085-0890	1
PAD,12X32.8X2 (Ref # 39156)	39156-2336	1
PAD,DIAGNOSTIC CONNECTOR (Ref # 39156A)	39156-2685	1
PAD (Ref # 39156B)	39156-2819	1
COVER-SEAL (Ref # 49016)	49016-0645	1
COVER-SEAL,ECU CONNECTOR (Ref # 49016A)	49016-0672	1
COVER-SEAL,REAR LAMP (Ref # 49016B)	49016-0699	1
COVER-SEAL,FUEL-PUMP CONNECTOR (Ref # 49016C)	49016-0700	1
TRIM,L=30 (Ref # 53044)	53044-0001	1

## 2022 Z650RS ABS PARTS LIST

### Chassis Electrical Equipment

ITEM NAME	PART NUMBER	QUANTITY
SCREW,TAPPING,5X14 (Ref # 92009)	92009-1197	4
BAND,OS170-FT7(BLACK) (Ref # 92072)	92072-1414	AR
BOLT,FLANGED,6X16 (Ref # 92154)	92154-0551	1
BOLT,FLANGED,6X18 (Ref # 92154A)	92154-4008	2
DAMPER,15X25X8.5 (Ref # 92161)	92161-1443	1
CLAMP,BRAKE HOSE (Ref # 92171)	92171-0316	1
SCREW,TAPPING,5X16 (Ref # 92172)	92172-0742	1
CLAMP,12MM DIA. (Ref # 92173)	92173-0736	3
CLAMP,HOLDER CLIP (Ref # 92173A)	92173-0868	1
CLAMP,A/C CASE,FR (Ref # 92173B)	92173-1586	1
CLAMP,A/C CASE,RR (Ref # 92173C)	92173-1587	1
CLAMP (Ref # 92173D)	92173-2198	2
CLAMP (Ref # 92173E)	92173-2199	6
CLAMP (Ref # 92173F)	92173-2480	2
BOLT-FLANGED,6X10 (Ref # 130)	130BA0610	2
BOLT-FLANGED,6X12 (Ref # 130A)	130BA0612	3
BOLT-FLANGED-SMALL,6X10 (Ref # 132)	132BA0610	2
BOLT-FLANGED-SMALL,6X12 (Ref # 132A)	132BB0612	1