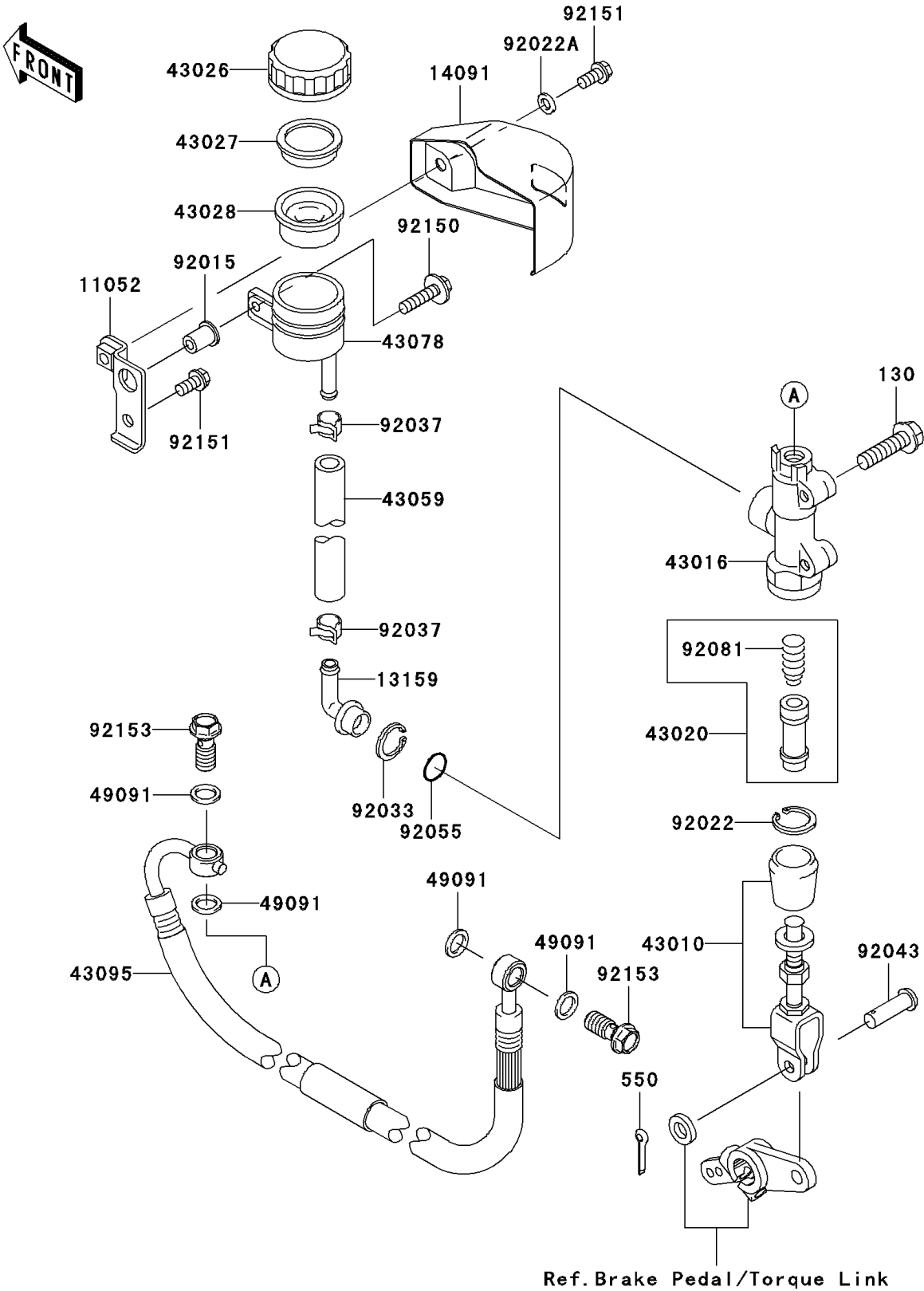


# 2008 Vulcan® 1600 Nomad™ PARTS DIAGRAM

Rear Master Cylinder

F2293



## 2008 Vulcan® 1600 Nomad™ PARTS LIST

### Rear Master Cylinder

ITEM NAME	PART NUMBER	QUANTITY
BOLT-FLANGED,8X30 (Ref # 130)	130J0830	2
PIN-COTTER,2.0X15 (Ref # 550)	550D2015	1
BRACKET,RESERVOIR TANK (Ref # 11052)	11052-1305	1
CONNECTOR,RR MASTER CYLINDER (Ref # 13159)	13159-1052	1
COVER,RESERVOIR TANK (Ref # 14091)	14091-0412	1
ROD-ASSY-BRAKE (Ref # 43010)	43010-1055	1
CYLINDER-MASTER,RR (Ref # 43016)	43016-1122	1
PISTON-COMP-BRAKE (Ref # 43020)	43020-1057	1
CAP-BRAKE (Ref # 43026)	43026-1051	1
PLATE-DIAPHRAGM (Ref # 43027)	43027-1051	1
DIAPHRAGM,MASTER CYLINDER (Ref # 43028)	43028-1057	1
HOSE-BRAKE,RR MASTER CYLINDER (Ref # 43059)	43059-1318	1
RESERVOIR,RR MASTER CYLINDER (Ref # 43078)	43078-1178	1
HOSE-BRAKE,RR (Ref # 43095)	43095-0150	1
WASHER-SEAL,10.1X14.5X1.5 (Ref # 49091)	49091-0001	4
NUT (Ref # 92015)	92015-1700	1
WASHER,CIRCRIP (Ref # 92022)	92022-1601	1
WASHER,6.2X11X1.5 (Ref # 92022A)	92022-183	1
RING-SNAP,20.5MM (Ref # 92033)	92033-1186	1
CLAMP,BRAKE HOSE (Ref # 92037)	92037-1547	2
PIN,8X16 (Ref # 92043)	92043-1013	1
RING-O,MASTER CYLINDER (Ref # 92055)	92055-1251	1
SPRING,MASTER CYLINDER (Ref # 92081)	92081-1737	1
BOLT,6X25 (Ref # 92150)	92150-1829	1
BOLT,FLANGED,6X12 (Ref # 92151)	92151-1401	2
BOLT,OIL,L=23 (Ref # 92153)	92153-0627	2