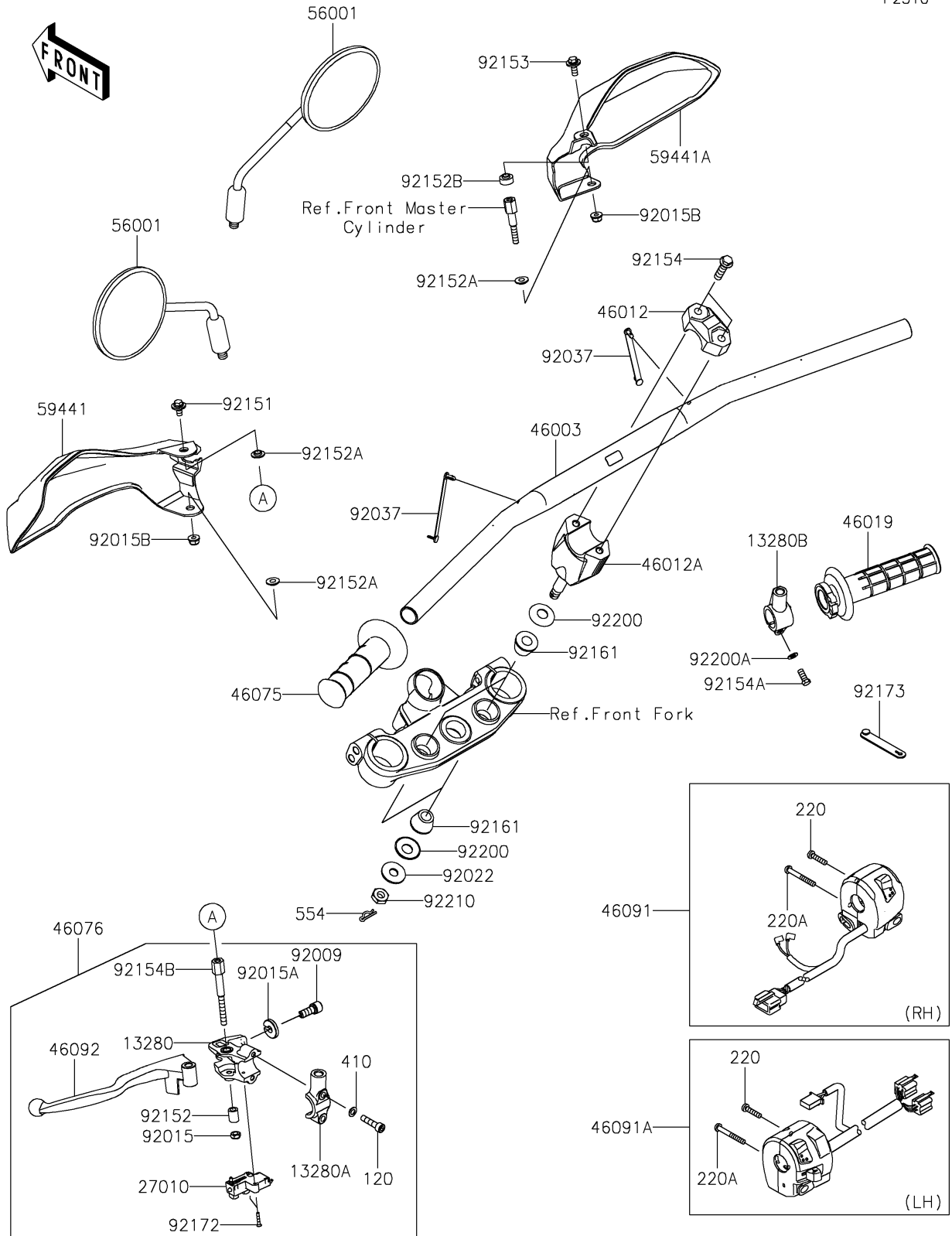


2022 KLX® 230 SE PARTS DIAGRAM

Handlebar

F2310



2022 KLX® 230 SE PARTS LIST

Handlebar

ITEM NAME	PART NUMBER	QUANTITY
HOLDER,LEVER (Ref # 13280)	13280-0929	1
HOLDER,MIRROR (Ref # 13280A)	13280-0930	1
HOLDER,MIRROR (Ref # 13280B)	13280-1000	1
SWITCH,CLUTCH (Ref # 27010)	27010-0729	1
HANDLE,FAT TYPE BAR,P.SILVER (Ref # 46003)	46003-0794-458	1
HOLDER-HANDLE,UPP,P.SILVER (Ref # 46012)	46012-0359-458	2
HOLDER-HANDLE,LWR,P.SILVER (Ref # 46012A)	46012-0360-458	2
GRIP-ASSY,THROTTLE (Ref # 46019)	46019-0088	1
GRIP,LH (Ref # 46075)	46075-0644	1
LEVER-ASSY-GRIP (Ref # 46076)	46076-0161	1
HOUSING-ASSY-CONTROL,RH (Ref # 46091)	46091-0452	1
HOUSING-ASSY-CONTROL,LH (Ref # 46091A)	46091-0455	1
LEVER-GRIP,CLUTCH (Ref # 46092)	46092-0576	1
MIRROR-ASSY (Ref # 56001)	56001-0419	2
COVER-HANDLE,LH,EBONY (Ref # 59441)	59441-0045-6C	1
COVER-HANDLE,RH,EBONY (Ref # 59441A)	59441-0046-6C	1
SCREW,CABLE ADJUST,8MM,BLACK (Ref # 92009)	92009-1134	1
NUT,LOCK,6MM,BLACK (Ref # 92015)	92015-1191	1
NUT,CABLE ADJUST LOCK,8MM,BLK (Ref # 92015A)	92015-1197	1
NUT,LOCK,FLANGED,6MM (Ref # 92015B)	92015-1603	2
WASHER,10.2X28X2 (Ref # 92022)	92022-1088	2
CLAMP,SPEED,L=80.5 (Ref # 92037)	92037-1903	2
BOLT,6X12 (Ref # 92151)	92151-1985	1
COLLAR,6.5X10.5X14 (Ref # 92152)	92152-2302	1
COLLAR,6.5X15X3.4 (Ref # 92152A)	92152-2314	3
COLLAR (Ref # 92152B)	92152-2592	1
BOLT,FLANGED,6X16 (Ref # 92153)	92153-1059	1
BOLT,FLANGED,8X30 (Ref # 92154)	92154-1246	4
BOLT,UPSET,6X22 (Ref # 92154A)	92154-1422	1

2022 KLX® 230 SE PARTS LIST

Handlebar

ITEM NAME	PART NUMBER	QUANTITY
BOLT (Ref # 92154B)	92154-2359	1
DAMPER,12X26X19 (Ref # 92161)	92161-2116	4
SCREW,3X16 (Ref # 92172)	92172-0183	2
CLAMP (Ref # 92173)	92173-2199	1
WASHER,12.5X27.6X1.2 (Ref # 92200)	92200-0872	4
WASHER,6.5X11.5X0.8 (Ref # 92200A)	92200-0947	1
NUT,LOCK,10MM (Ref # 92210)	92210-1672	2
BOLT-SOCKET,6X25 (Ref # 120)	120CB0625	2
SCREW-PAN-CROS,5X22 (Ref # 220)	220AB0522	2
SCREW-PAN-CROS,5X40 (Ref # 220A)	220AB0540	2
WASHER-PLAIN-SMALL,6MM (Ref # 410)	410AB0600	2
PIN-SNAP (Ref # 554)	554DA0800	2