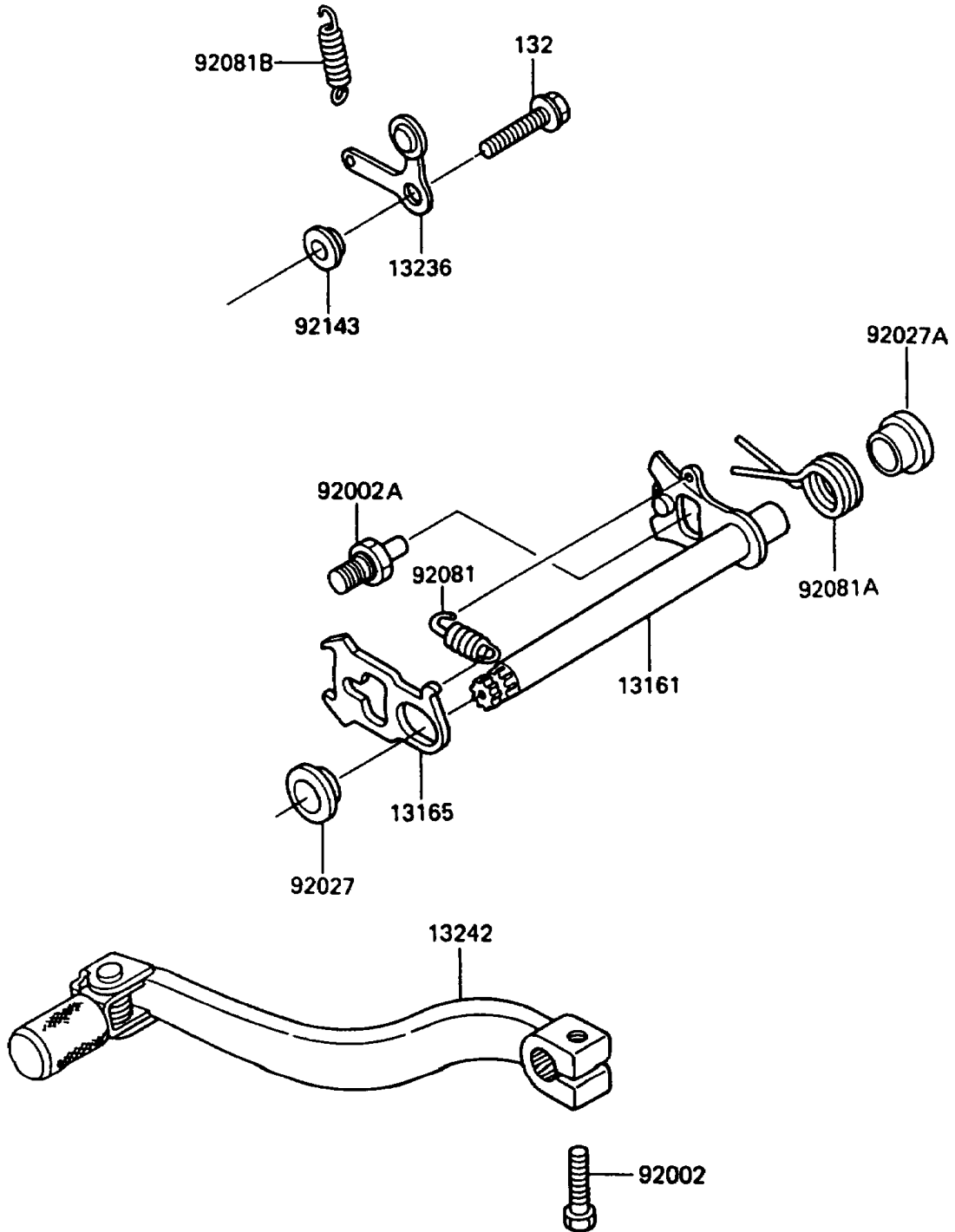


# 1989 KX80 PARTS DIAGRAM

Gear Change Mechanism

E1370-0157



# 1989 KX80 PARTS LIST

## Gear Change Mechanism

| ITEM NAME                                 | PART NUMBER | QUANTITY |
|---|-------------|----------|
| LEVER-COMP-CHANGE SHAFT (Ref # 13161)     | 13161-1126  | 1        |
| PAWL,CHANGE LEVER (Ref # 13165)           | 13165-1114  | 1        |
| LEVER-COMP,POSITION (Ref # 13236)         | 13236-1152  | 1        |
| LEVER-ASSY-CHANGE,PEDAL (Ref # 13242)     | 13242-1205  | 1        |
| BOLT,6X20 (Ref # 92002)                   | 92002-1237  | 1        |
| BOLT,8X15 (Ref # 92002A)                  | 92002-1601  | 1        |
| COLLAR (Ref # 92027)                      | 92027-1939  | 1        |
| COLLAR (Ref # 92027A)                     | 92027-1940  | 1        |
| SPRING,CHANGE LEVER (Ref # 92081)         | 92081-076   | 1        |
| SPRING,CHANGE SHAFT RETURN (Ref # 92081A) | 92081-1716  | 1        |
| SPRING,CHANGE DRUM LEVER (Ref # 92081B)   | 92083-012   | 1        |
| COLLAR (Ref # 92143)                      | 92143-1055  | 1        |
| BOLT-FLANGED-SMALL (Ref # 132)            | 132G0616    | 1        |