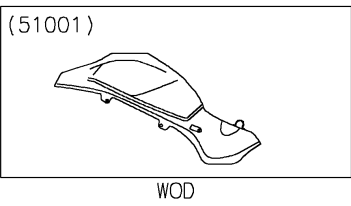
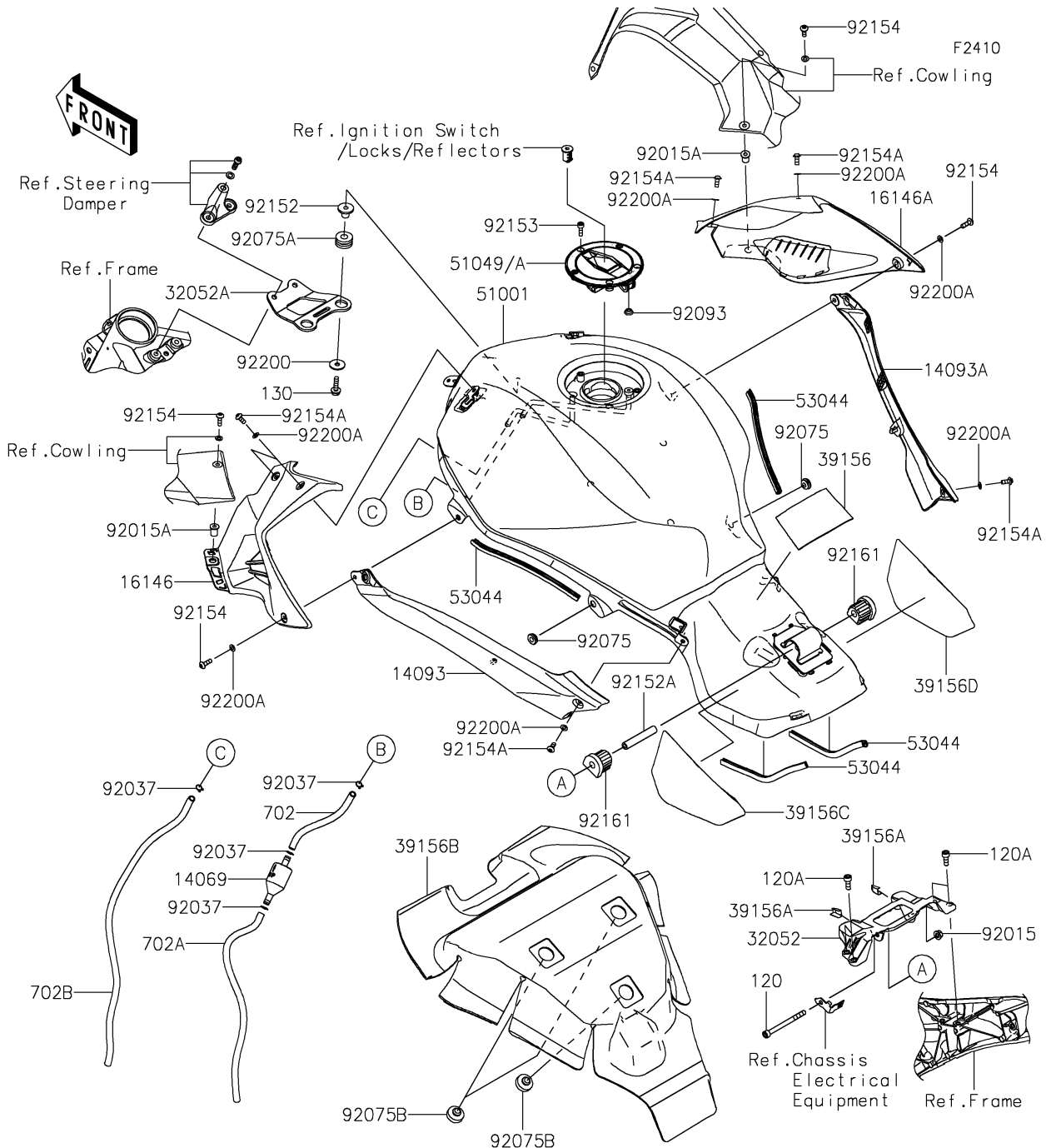


2017 NINJA H2™ R PARTS DIAGRAM

Fuel Tank



2017 NINJA H2™ R PARTS LIST

Fuel Tank

| ITEM NAME | PART NUMBER | QUANTITY |
|---|----------------|----------|
| BREATHER,TANK (Ref # 14069) | 14069-0008 | 1 |
| COVER,KNEE GRIP,LH (Ref # 14093) | 14093-0180 | 1 |
| COVER,KNEE GRIP,RH (Ref # 14093A) | 14093-0181 | 1 |
| COVER-ASSY,TANK,LH,M.C.M.S.BLK (Ref # 16146) | 16146-0780-60E | 1 |
| COVER-ASSY,TANK,RH,M.C.M.S.BLK (Ref # 16146A) | 16146-0781-60E | 1 |
| BRACKET-TANK,RR (Ref # 32052) | 32052-0763 | 1 |
| BRACKET-TANK,FR (Ref # 32052A) | 32052-0764 | 1 |
| PAD,RR FRM (Ref # 39156) | 39156-1778 | 1 |
| PAD,15X20X0.2 (Ref # 39156A) | 39156-1784 | 2 |
| PAD,FUEL TANK (Ref # 39156B) | 39156-1848 | 1 |
| PAD,FUEL TANK,LH (Ref # 39156C) | 39156-1942 | 1 |
| PAD,FUEL TANK,RH (Ref # 39156D) | 39156-1943 | 1 |
| TANK-COMP-FUEL,M.C.M.S.BLACK (Ref # 51001) | 51001-0820-60E | 1 |
| CAP-TANK (Ref # 51049) | 51049-0721 | 1 |
| TRIM,FUEL TANK (Ref # 53044) | 53044-0582 | 4 |
| NUT,FLANGED,6MM (Ref # 92015) | 92015-1367 | 1 |
| NUT,WELL,5MM (Ref # 92015A) | 92015-1757 | 2 |
| CLAMP,TUBE (Ref # 92037) | 92037-010 | 4 |
| DAMPER,6X16X7 (Ref # 92075) | 92075-1011 | 2 |
| DAMPER,10X24X12 (Ref # 92075A) | 92075-1690 | 2 |
| DAMPER,9X24X14 (Ref # 92075B) | 92075-281 | 3 |
| SEAL,FUEL TANK CAP (Ref # 92093) | 92093-1030 | 1 |
| COLLAR,6.3X10X14.5 (Ref # 92152) | 92152-0091 | 2 |
| COLLAR,6X10X60.2 (Ref # 92152A) | 92152-1964 | 1 |
| BOLT,SOCKET,5X16 (Ref # 92153) | 92153-1616 | 3 |
| BOLT,SOCKET,5X16 (Ref # 92154) | 92154-1560 | 4 |
| BOLT,SOCKET,5X12 (Ref # 92154A) | 92154-1561 | 6 |
| DAMPER,FUEL TANK (Ref # 92161) | 92161-1737 | 2 |
| WASHER,6.5X22X1.6 (Ref # 92200) | 92200-1087 | 2 |

2017 NINJA H2™ R PARTS LIST

Fuel Tank

| ITEM NAME | PART NUMBER | QUANTITY |
|----------------------------------|-------------|----------|
| WASHER,5.2X10X1.0 (Ref # 92200A) | 92200-1820 | 8 |
| BOLT-SOCKET,6X75 (Ref # 120) | 120CA0675 | 1 |
| BOLT-SOCKET,6X16 (Ref # 120A) | 120CB0616 | 4 |
| BOLT-FLANGED,6X22 (Ref # 130) | 130CA0622 | 2 |
| TUBE-RUBBER,6X9X140 (Ref # 702) | 702A06140 | 1 |
| TUBE-RUBBER,6X9X330 (Ref # 702A) | 702A06330 | 1 |
| TUBE-RUBBER,6X9X470 (Ref # 702B) | 702A06470 | 1 |