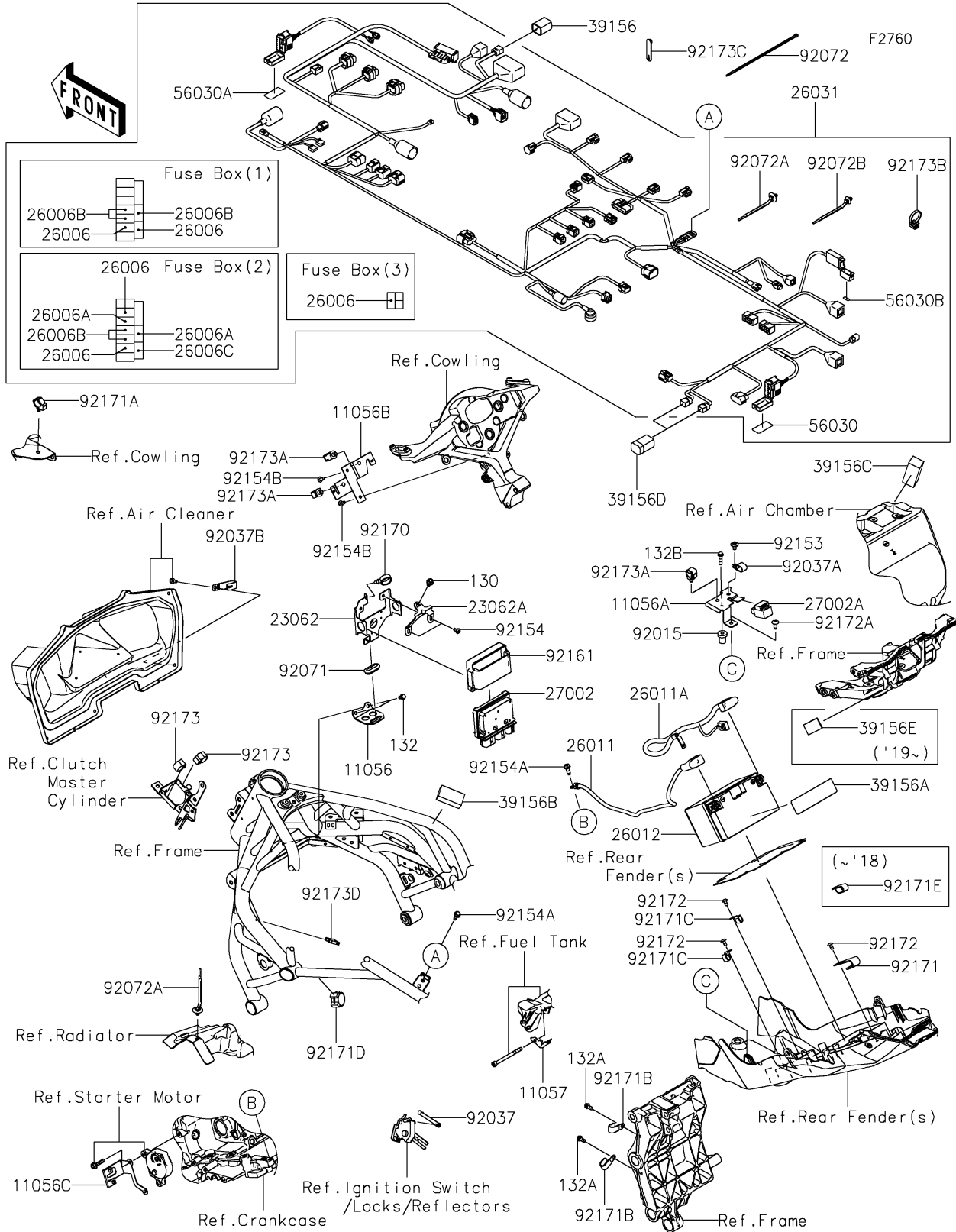


# 2019 NINJA H2™ R PARTS DIAGRAM

## Chassis Electrical Equipment



## 2019 NINJA H2™ R PARTS LIST

### Chassis Electrical Equipment

| ITEM NAME                                    | PART NUMBER | QUANTITY |
|--|-------------|----------|
| BRACKET,RELAY BRKT.,LWR (Ref # 11056)        | 11056-7100  | 1        |
| BRACKET,RR WHEEL SPEED SENSOR (Ref # 11056A) | 11056-7175  | 1        |
| BRACKET,HARNESS CONNECTOR (Ref # 11056B)     | 11056-7378  | 1        |
| BRACKET,STARTER (Ref # 11056C)               | 11056-7543  | 1        |
| BRACKET,FUEL PUMP CONNECTOR (Ref # 11057)    | 11057-0040  | 1        |
| BRACKET-COMP,RELAY BOX (Ref # 23062)         | 23062-0844  | 1        |
| BRACKET-COMP,RELAY BRKT.,UPP (Ref # 23062A)  | 23062-0845  | 1        |
| FUSE,MINI BLADE,15A,BLUE (Ref # 26006)       | 26006-0001  | 5        |
| FUSE,MINI BLADE,25A,NATURAL (Ref # 26006A)   | 26006-0020  | 2        |
| FUSE,MINI BLADE,10A,RED (Ref # 26006B)       | 26006-1078  | 5        |
| FUSE,MINI BLADE,30A,GREEN (Ref # 26006C)     | 26006-1080  | 1        |
| WIRE-LEAD,BATTERY(-) (Ref # 26011)           | 26011-0908  | 1        |
| WIRE-LEAD,BATTERY(+) (Ref # 26011A)          | 26011-0909  | 1        |
| BATTERY,YTZ10S,12V 8.6AH (Ref # 26012)       | 26012-0564  | 1        |
| HARNESS,MAIN (Ref # 26031)                   | 26031-2190  | 1        |
| RELAY-ASSY (Ref # 27002)                     | 27002-0042  | 1        |
| RELAY-ASSY (Ref # 27002A)                    | 27002-1062  | 1        |
| PAD,DIAG. CONNECTOR (Ref # 39156)            | 39156-1886  | 1        |
| PAD,30X115X0.36 (Ref # 39156A)               | 39156-1895  | 1        |
| PAD,25X50X20 (Ref # 39156B)                  | 39156-1940  | 1        |
| PAD,25X65X20 (Ref # 39156C)                  | 39156-1945  | 1        |
| PAD,DIAG. CONNECTOR (Ref # 39156D)           | 39156-2112  | 2        |
| PAD,30X15X1 (Ref # 39156E)                   | 39156-2495  | 1        |
| LABEL,FUSE BOX 2 (Ref # 56030)               | 56030-0902  | 1        |
| LABEL,FUSE BOX 1 (Ref # 56030A)              | 56030-0903  | 1        |
| LABEL,FUSE BOX 3 (Ref # 56030B)              | 56030-0906  | 1        |
| NUT,RUBBER,6MM (Ref # 92015)                 | 92015-1692  | 1        |
| CLAMP,SPEED,L=58 (Ref # 92037)               | 92037-1163  | 1        |
| CLAMP (Ref # 92037A)                         | 92037-1608  | 1        |

## 2019 NINJA H2™ R PARTS LIST

### Chassis Electrical Equipment

| ITEM NAME                              | PART NUMBER | QUANTITY |
|--|-------------|----------|
| CLAMP,CABLE,STEEL SHEET (Ref # 92037B) | 92037-2014  | 1        |
| GROMMET (Ref # 92071)                  | 92071-1187  | 1        |
| BAND,202X3.6 (Ref # 92072)             | 92072-0782  | 4        |
| BAND (Ref # 92072A)                    | 92072-1392  | 2        |
| BAND,OS170-FT7(BLACK) (Ref # 92072B)   | 92072-1414  | 1        |
| BOLT,SOCKET,6X10 (Ref # 92153)         | 92153-0410  | 1        |
| BOLT,SOCKET,5X10 (Ref # 92154)         | 92154-0211  | 2        |
| BOLT,FLANGED,6X16 (Ref # 92154A)       | 92154-0551  | 2        |
| BOLT,SOCKET,5X12 (Ref # 92154B)        | 92154-0917  | 2        |
| DAMPER,RELAY BOX (Ref # 92161)         | 92161-0203  | 1        |
| CLAMP (Ref # 92170)                    | 92170-1067  | 1        |
| CLAMP (Ref # 92171)                    | 92171-0305  | 1        |
| CLAMP,BRAKE HOSE (Ref # 92171A)        | 92171-0316  | 1        |
| CLAMP (Ref # 92171B)                   | 92171-0739  | 2        |
| CLAMP (Ref # 92171C)                   | 92171-0766  | 2        |
| CLAMP,25MM DIA. (Ref # 92171D)         | 92171-1559  | 1        |
| SCREW,TAPPING,5X10 (Ref # 92172)       | 92172-0262  | 3        |
| SCREW,6X16 (Ref # 92172A)              | 92172-0284  | 1        |
| CLAMP,CLIP (Ref # 92173)               | 92173-0127  | 2        |
| CLAMP,12MM DIA. (Ref # 92173A)         | 92173-0736  | 3        |
| CLAMP (Ref # 92173B)                   | 92173-0791  | 3        |
| CLAMP,RUBBER PLATE (Ref # 92173C)      | 92173-1229  | 2        |
| CLAMP (Ref # 92173D)                   | 92173-1513  | 1        |
| BOLT-FLANGED,6X10 (Ref # 130)          | 130BA0610   | 1        |
| BOLT-FLANGED-SMALL,6X10 (Ref # 132)    | 132BA0610   | 2        |
| BOLT-FLANGED-SMALL,6X12 (Ref # 132A)   | 132BA0612   | 2        |
| BOLT-FLANGED-SMALL,6X22 (Ref # 132B)   | 132BA0622   | 1        |