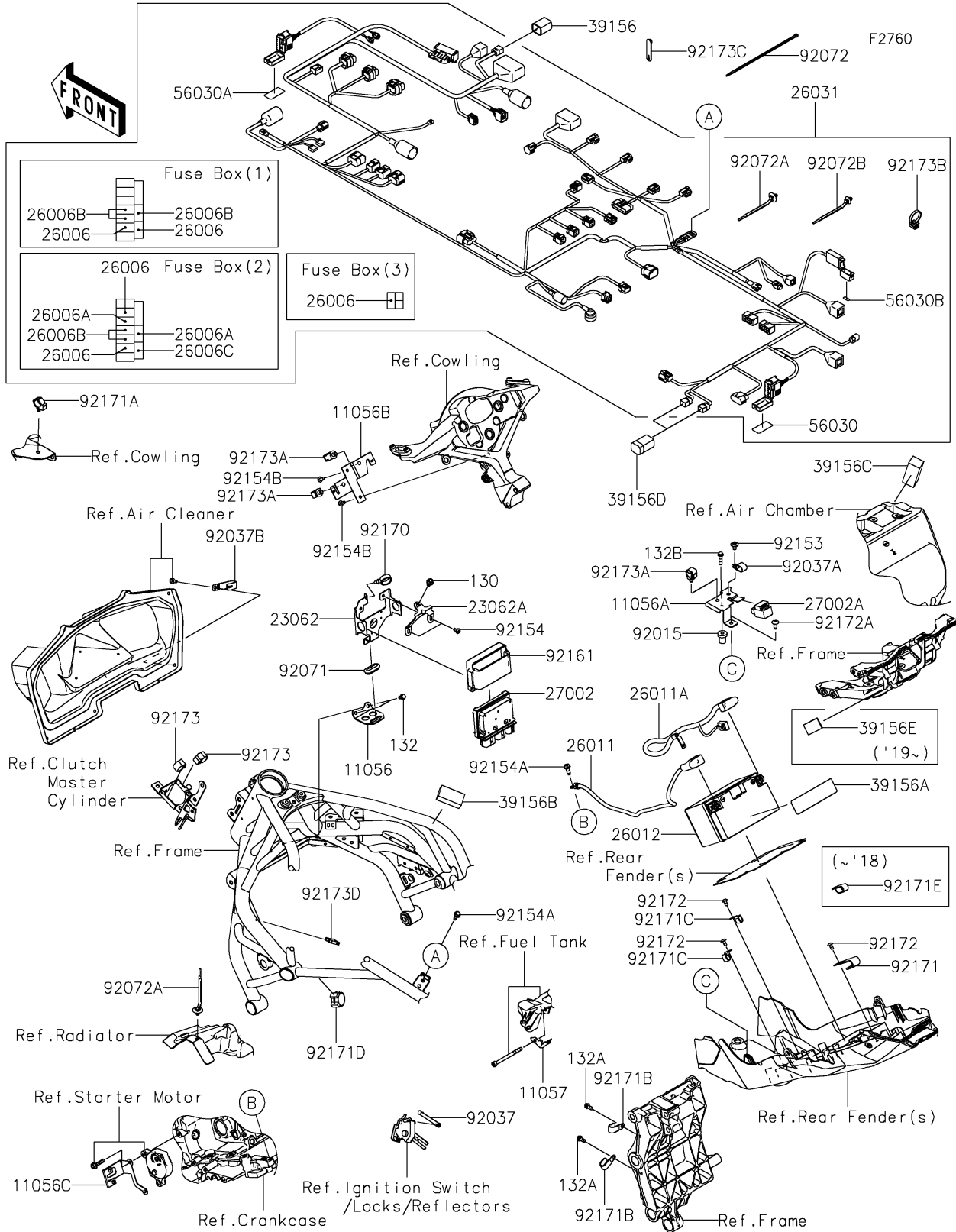


2020 NINJA H2™ R PARTS DIAGRAM

Chassis Electrical Equipment



2020 NINJA H2™ R PARTS LIST

Chassis Electrical Equipment

ITEM NAME	PART NUMBER	QUANTITY
BRACKET,RELAY BRKT.,LWR (Ref # 11056)	11056-7100	1
BRACKET,RR WHEEL SPEED SENSOR (Ref # 11056A)	11056-7175	1
BRACKET,HARNESS CONNECTOR (Ref # 11056B)	11056-7378	1
BRACKET,STARTER (Ref # 11056C)	11056-7543	1
BRACKET,FUEL PUMP CONNECTOR (Ref # 11057)	11057-0040	1
BRACKET-COMP,RELAY BOX (Ref # 23062)	23062-0844	1
BRACKET-COMP,RELAY BRKT.,UPP (Ref # 23062A)	23062-0845	1
FUSE,MINI BLADE,15A,BLUE (Ref # 26006)	26006-0001	5
FUSE,MINI BLADE,25A,NATURAL (Ref # 26006A)	26006-0020	2
FUSE,MINI BLADE,10A,RED (Ref # 26006B)	26006-1078	5
FUSE,MINI BLADE,30A,GREEN (Ref # 26006C)	26006-1080	1
WIRE-LEAD,BATTERY(-) (Ref # 26011)	26011-0908	1
WIRE-LEAD,BATTERY(+) (Ref # 26011A)	26011-0909	1
BATTERY,YTZ10S,12V 8.6AH (Ref # 26012)	26012-0564	1
HARNESS,MAIN (Ref # 26031)	26031-2190	1
RELAY-ASSY (Ref # 27002)	27002-0042	1
RELAY-ASSY (Ref # 27002A)	27002-1062	1
PAD,DIAG. CONNECTOR (Ref # 39156)	39156-1886	1
PAD,30X115X0.36 (Ref # 39156A)	39156-1895	1
PAD,25X50X20 (Ref # 39156B)	39156-1940	1
PAD,25X65X20 (Ref # 39156C)	39156-1945	1
PAD,DIAG. CONNECTOR (Ref # 39156D)	39156-2112	2
PAD,30X15X1 (Ref # 39156E)	39156-2495	1
LABEL,FUSE BOX 2 (Ref # 56030)	56030-0902	1
LABEL,FUSE BOX 1 (Ref # 56030A)	56030-0903	1
LABEL,FUSE BOX 3 (Ref # 56030B)	56030-0906	1
NUT,RUBBER,6MM (Ref # 92015)	92015-1692	1
CLAMP,SPEED,L=58 (Ref # 92037)	92037-1163	1
CLAMP (Ref # 92037A)	92037-1608	1

2020 NINJA H2™ R PARTS LIST

Chassis Electrical Equipment

ITEM NAME	PART NUMBER	QUANTITY
CLAMP,CABLE,STEEL SHEET (Ref # 92037B)	92037-2014	1
GROMMET (Ref # 92071)	92071-1187	1
BAND,202X3.6 (Ref # 92072)	92072-0782	4
BAND (Ref # 92072A)	92072-1392	2
BAND,OS170-FT7(BLACK) (Ref # 92072B)	92072-1414	1
BOLT,SOCKET,6X10 (Ref # 92153)	92153-0410	1
BOLT,SOCKET,5X10 (Ref # 92154)	92154-0211	2
BOLT,FLANGED,6X16 (Ref # 92154A)	92154-0551	2
BOLT,SOCKET,5X12 (Ref # 92154B)	92154-0917	2
DAMPER,RELAY BOX (Ref # 92161)	92161-0203	1
CLAMP (Ref # 92170)	92170-1067	1
CLAMP (Ref # 92171)	92171-0305	1
CLAMP,BRAKE HOSE (Ref # 92171A)	92171-0316	1
CLAMP (Ref # 92171B)	92171-0739	2
CLAMP (Ref # 92171C)	92171-0766	2
CLAMP,25MM DIA. (Ref # 92171D)	92171-1559	1
SCREW,TAPPING,5X10 (Ref # 92172)	92172-0262	3
SCREW,6X16 (Ref # 92172A)	92172-0284	1
CLAMP,CLIP (Ref # 92173)	92173-0127	2
CLAMP,12MM DIA. (Ref # 92173A)	92173-0736	3
CLAMP (Ref # 92173B)	92173-0791	3
CLAMP,RUBBER PLATE (Ref # 92173C)	92173-1229	2
CLAMP (Ref # 92173D)	92173-1513	1
BOLT-FLANGED,6X10 (Ref # 130)	130BA0610	1
BOLT-FLANGED-SMALL,6X10 (Ref # 132)	132BA0610	2
BOLT-FLANGED-SMALL,6X12 (Ref # 132A)	132BA0612	2
BOLT-FLANGED-SMALL,6X22 (Ref # 132B)	132BA0622	1