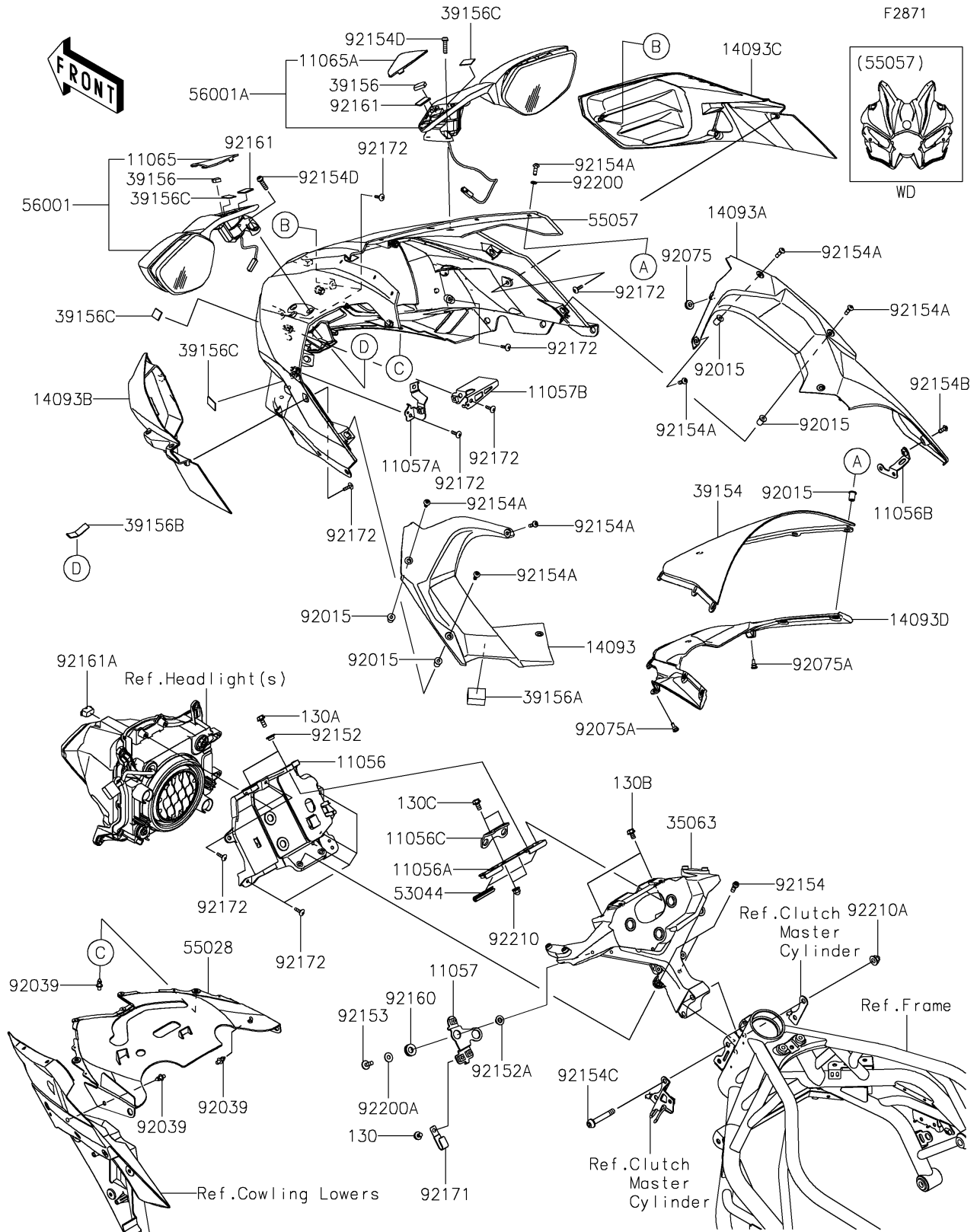


# 2021 NINJA H2® PARTS DIAGRAM

Cowling(JMFNN/JMFNL)



## 2021 NINJA H2® PARTS LIST

Cowling(JMFNN/JMFNL)

ITEM NAME	PART NUMBER	QUANTITY
BRACKET,HEAD LAMP (Ref # 11056)	11056-4497	1
BRACKET,METER STAY (Ref # 11056A)	11056-7076	1
BRACKET,INNER COVER (Ref # 11056B)	11056-7098	1
BRACKET,V.D. SENSOR (Ref # 11056C)	11056-7534	1
BRACKET,GYRO SENSOR (Ref # 11057)	11057-0447	1
BRACKET (Ref # 11057A)	11057-0765	1
BRACKET,HEAD LAMP HARNESS (Ref # 11057B)	11057-0777	1
CAP,UPP,LH (Ref # 11065)	11065-0922	1
CAP,UPP,RH (Ref # 11065A)	11065-0923	1
COVER,INNER,LH (Ref # 14093)	14093-0182	1
COVER,INNER,RH (Ref # 14093A)	14093-0183	1
COVER,DUCT,LH (Ref # 14093B)	14093-0185	1
COVER,DUCT,RH (Ref # 14093C)	14093-0186	1
COVER,METER VISOR (Ref # 14093D)	14093-0783	1
STAY,UPP COWL.,M.F.S.BLACK (Ref # 35063)	35063-1459-46R	1
WINDSHIELD (Ref # 39154)	39154-0341	1
PAD,12X10X8 (Ref # 39156)	39156-1809	2
PAD,20X30X24 (Ref # 39156A)	39156-1900	1
PAD,10X50X2 (Ref # 39156B)	39156-1924	1
PAD,15X25X1 (Ref # 39156C)	39156-2119	6
TRIM (Ref # 53044)	53044-0580	2
COWLING,UPP,LWR (Ref # 55028)	55028-0539	1
COWLING,UPP,M.C.S.BLACK (Ref # 55057)	55057-5315-53X	1
MIRROR-ASSY,LH,M.F.S.BLACK (Ref # 56001)	56001-0330-739	1
MIRROR-ASSY,RH,M.F.S.BLACK (Ref # 56001A)	56001-0331-739	1
NUT,WELL,5MM (Ref # 92015)	92015-1757	10
RIVET (Ref # 92039)	92039-0060	4
DAMPER,6X16X7 (Ref # 92075)	92075-1011	1
DAMPER,6X10X15 (Ref # 92075A)	92075-1808	2

## 2021 NINJA H2® PARTS LIST

Cowling(JMFNN/JMFNL)

ITEM NAME	PART NUMBER	QUANTITY
COLLAR,6.5X10X5.6 (Ref # 92152)	92152-0445	2
COLLAR,6.5X16X7.3 (Ref # 92152A)	92152-2336	2
BOLT,6X18 (Ref # 92153)	92153-0816	2
BOLT,SOCKET,6X18 (Ref # 92154)	92154-1455	2
BOLT,SOCKET,5X16 (Ref # 92154A)	92154-1560	12
BOLT,SOCKET,5X12 (Ref # 92154B)	92154-1561	1
BOLT,SOCKET,8X52 (Ref # 92154C)	92154-1710	2
BOLT,SOCKET,6X22 (Ref # 92154D)	92154-1724	4
DAMPER (Ref # 92160)	92160-1278	2
DAMPER,16X23X2 (Ref # 92161)	92161-1696	2
DAMPER,HEAD LAMP (Ref # 92161A)	92161-1734	1
CLAMP (Ref # 92171)	92171-0305	1
SCREW,TAPPING,5X16 (Ref # 92172)	92172-0238	14
WASHER,5.2X10X1.0 (Ref # 92200)	92200-1820	6
WASHER,6.5X16X1.0 (Ref # 92200A)	92200-3712	2
NUT,CAP,6MM (Ref # 92210)	92210-0003	2
NUT,CAP,8MM (Ref # 92210A)	92210-1132	2
BOLT-FLANGED,6X8 (Ref # 130)	130BA0608	1
BOLT-FLANGED,6X14 (Ref # 130A)	130BA0614	2
BOLT-FLANGED,6X10 (Ref # 130B)	130BB0610	2
BOLT-FLANGED,6X12 (Ref # 130C)	130R0612	2