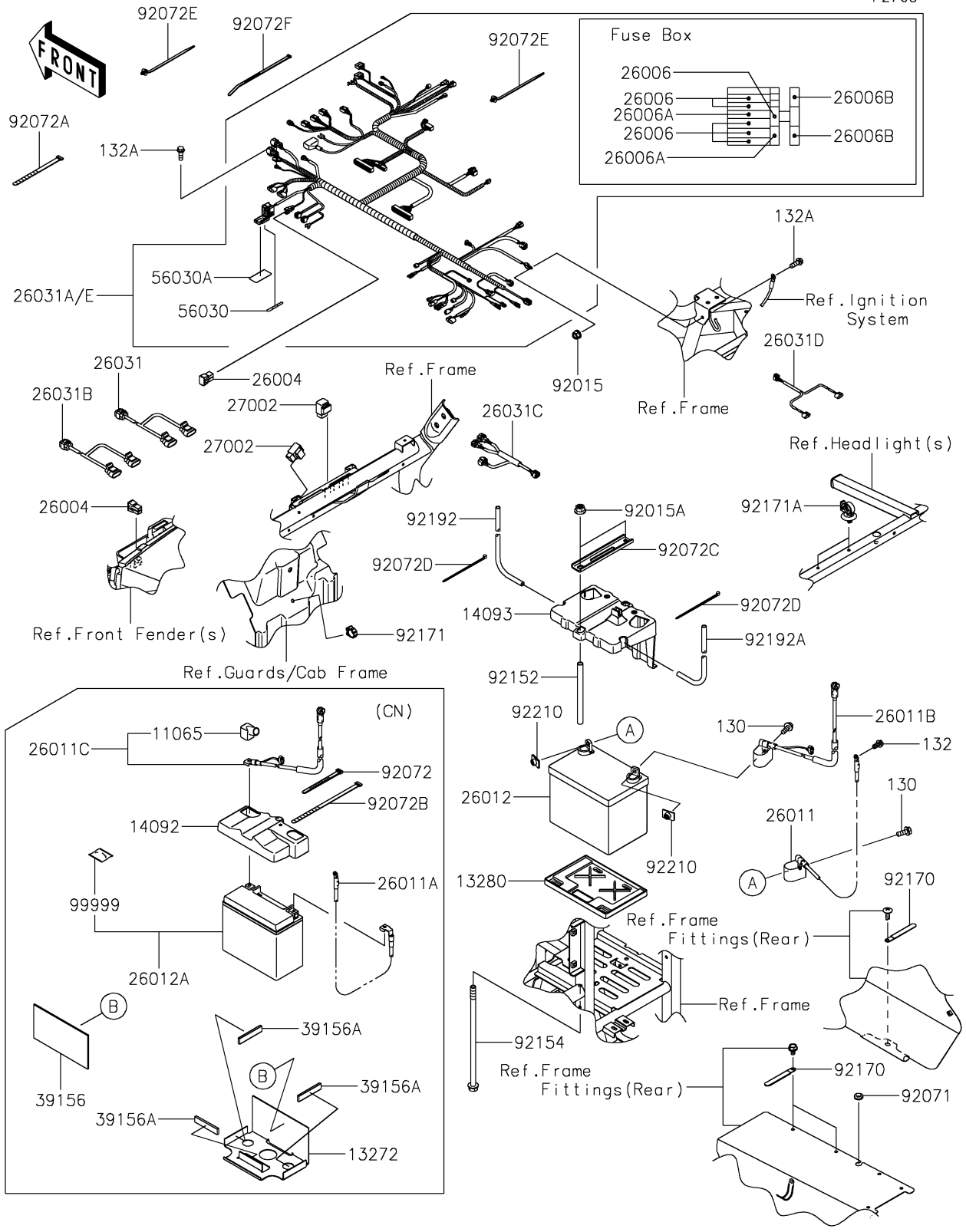


# 2020 TERYX4™ LE CAMO PARTS DIAGRAM

## Chassis Electrical Equipment

F2760



## 2020 TERYX4™ LE CAMO PARTS LIST

### Chassis Electrical Equipment

| ITEM NAME                                 | PART NUMBER | QUANTITY |
|---|-------------|----------|
| CAP (Ref # 11065)                         | 11065-0755  | 1        |
| PLATE,BATTERY BOTTOM (Ref # 13272)        | 13272-1322  | 1        |
| HOLDER,BATTERY (Ref # 13280)              | 13280-0709  | 1        |
| COVER,BATTERY (Ref # 14092)               | 14092-0978  | 1        |
| COVER,BATTERY (Ref # 14093)               | 14093-0546  | 1        |
| FUSE-ASSY,40A (Ref # 26004)               | 26004-1093  | 2        |
| FUSE,MINI BLADE,10A,RED (Ref # 26006)     | 26006-0009  | 6        |
| FUSE,MINI BLADE,20A,YELLOW (Ref # 26006A) | 26006-1079  | 2        |
| FUSE,MINI BLADE,30A,GREEN (Ref # 26006B)  | 26006-1080  | 2        |
| WIRE-LEAD,BATTERY(-) (Ref # 26011)        | 26011-1852  | 1        |
| WIRE-LEAD,BATTERY(-) (Ref # 26011A)       | 26011-1853  | 1        |
| WIRE-LEAD,BATTERY(+) (Ref # 26011B)       | 26011-1854  | 1        |
| WIRE-LEAD,BATTERY(+) (Ref # 26011C)       | 26011-1855  | 1        |
| BATTERY,12V 14AH (Ref # 26012)            | 26012-0107  | 1        |
| BATTERY,YTX20L-BS,12V 18AH (Ref # 26012A) | 26012-0787  | 1        |
| HARNESS,HEAD LAMP,RH,2P (Ref # 26031)     | 26031-2387  | 1        |
| HARNESS,MAIN (Ref # 26031A)               | 26031-2424  | 1        |
| HARNESS,HEAD LAMP,LH,2P (Ref # 26031B)    | 26031-2428  | 1        |
| HARNESS,SUB,FI (Ref # 26031C)             | 26031-2430  | 1        |
| HARNESS,SUB,TAIL LAMP (Ref # 26031D)      | 26031-2431  | 1        |
| HARNESS,MAIN (Ref # 26031E)               | 26031-2433  | 1        |
| RELAY-ASSY (Ref # 27002)                  | 27002-1062  | 2        |
| PAD,175X94X3 (Ref # 39156)                | 39156-0837  | 1        |
| PAD,15X72X5 (Ref # 39156A)                | 39156-0838  | 3        |
| LABEL,FUSE BOX,30A (Ref # 56030)          | 56030-0404  | 1        |
| LABEL,FUSE BOX (Ref # 56030A)             | 56030-0900  | 1        |
| NUT,LOCK,FLANGED,6MM (Ref # 92015)        | 92015-1339  | 1        |
| NUT,FLANGED,8MM (Ref # 92015A)            | 92015-1406  | 2        |
| GROMMET,10X20X6 (Ref # 92071)             | 92071-0733  | 1        |

## 2020 TERYX4™ LE CAMO PARTS LIST

### Chassis Electrical Equipment

| ITEM NAME                            | PART NUMBER | QUANTITY |
|--------------------------------------|-------------|----------|
| BAND,L=123 (Ref # 92072)             | 92072-030   | 1        |
| BAND,L=149 (Ref # 92072A)            | 92072-031   | 1        |
| BAND,L=218 (Ref # 92072B)            | 92072-032   | 1        |
| BAND (Ref # 92072C)                  | 92072-0707  | 1        |
| BAND,92X2.4 (Ref # 92072D)           | 92072-0791  | 2        |
| BAND,OS170-FT7(BLACK) (Ref # 92072E) | 92072-1414  | 14       |
| BAND,L=292.1 (Ref # 92072F)          | 92072-3509  | 21       |
| COLLAR,10.2X12.7X165.8 (Ref # 92152) | 92152-1555  | 2        |
| BOLT,FLANGED,8X185 (Ref # 92154)     | 92154-0889  | 2        |
| CLAMP (Ref # 92170)                  | 92170-1925  | 3        |
| CLAMP,BRAKE HOSE (Ref # 92171)       | 92171-0316  | 1        |
| CLAMP (Ref # 92171A)                 | 92171-0453  | 2        |
| TUBE,7X10X450 (Ref # 92192)          | 92192-1695  | 1        |
| TUBE,7X10X560 (Ref # 92192A)         | 92192-1818  | 1        |
| NUT,PLATE,6MM (Ref # 92210)          | 92210-1352  | 2        |
| BOLT NUT KIT (Ref # 99999)           | 99999-0311  | 1        |
| BOLT-FLANGED,6X16 (Ref # 130)        | 130BA0616   | 2        |
| BOLT-FLANGED-SMALL,6X12 (Ref # 132)  | 132BA0612   | 1        |
| BOLT-FLANGED-SMALL,6X16 (Ref # 132A) | 132BA0616   | 2        |