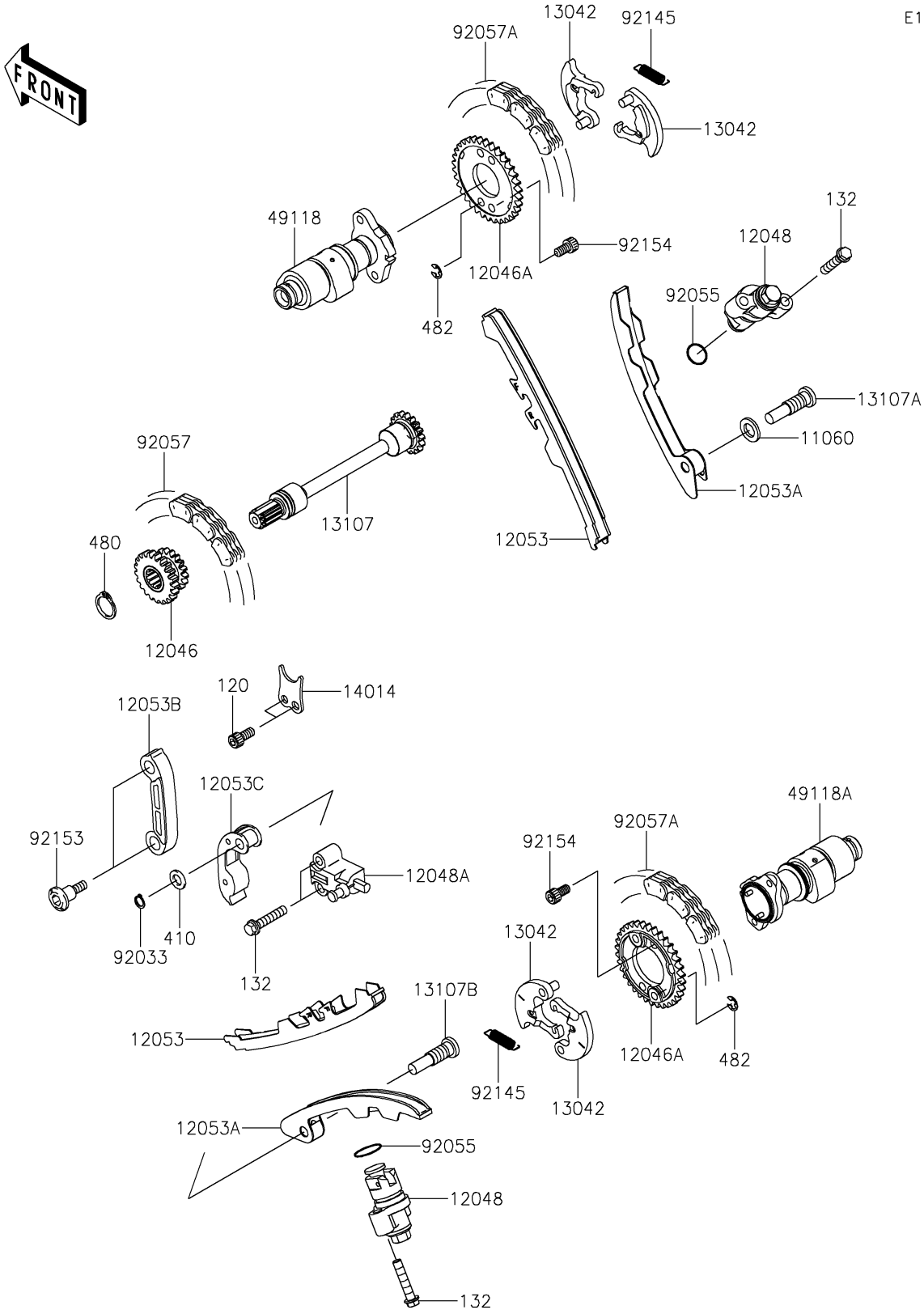


# 2021 TERYX4™ PARTS DIAGRAM

Camshaft(s)/Tensioner

E1230



## 2021 TERYX4™ PARTS LIST

Camshaft(s)/Tensioner

| ITEM NAME                                  | PART NUMBER | QUANTITY |
|--------------------------------------------|-------------|----------|
| GASKET (Ref # 11060)                       | 11060-1966  | 1        |
| SPROCKET,21T&17T (Ref # 12046)             | 12046-0559  | 1        |
| SPROCKET,CAMSHAFT,34T (Ref # 12046A)       | 12046-0568  | 2        |
| TENSIONER-ASSY,CAM (Ref # 12048)           | 12048-1176  | 2        |
| TENSIONER-ASSY,SECONDARY (Ref # 12048A)    | 12048-1177  | 1        |
| GUIDE-CHAIN,CAMSHAFT,TENSION (Ref # 12053) | 12053-1441  | 2        |
| GUIDE-CHAIN,CAMSHAFT,SLACK (Ref # 12053A)  | 12053-1442  | 2        |
| GUIDE-CHAIN,TENSION (Ref # 12053B)         | 12053-1443  | 1        |
| GUIDE-CHAIN,SLACK (Ref # 12053C)           | 12053-1444  | 1        |
| WEIGHT,DECOMP (Ref # 13042)                | 13042-1141  | 4        |
| SHAFT (Ref # 13107)                        | 13107-0761  | 1        |
| SHAFT,CHAIN GUIDE,FR (Ref # 13107A)        | 13107-1443  | 1        |
| SHAFT,CHAIN GUIDE,RR (Ref # 13107B)        | 13107-1444  | 1        |
| PLATE-POSITION,DRIVE (Ref # 14014)         | 14014-0050  | 1        |
| CAMSHAFT-COMP,FR (Ref # 49118)             | 49118-0939  | 1        |
| CAMSHAFT-COMP,RR (Ref # 49118A)            | 49118-0940  | 1        |
| RING-SNAP,8MM (Ref # 92033)                | 92033-1039  | 1        |
| RING-O,18.8X1.9 (Ref # 92055)              | 92055-086   | 2        |
| CHAIN,DID SCR-0412 SV (Ref # 92057)        | 92057-0186  | 1        |
| CHAIN,DID SCR-0409 SV (Ref # 92057A)       | 92057-0187  | 2        |
| SPRING,DECOMP (Ref # 92145)                | 92145-0913  | 2        |
| BOLT,SOCKET,6X24.5 (Ref # 92153)           | 92153-1200  | 2        |
| BOLT,SOCKET,6X12 (Ref # 92154)             | 92154-1820  | 4        |
| BOLT-SOCKET,6X14 (Ref # 120)               | 120CB0614   | 2        |
| BOLT-FLANGED-SMALL,6X30 (Ref # 132)        | 132BA0630   | 6        |
| WASHER-PLAIN-SMALL,8MM (Ref # 410)         | 410AA0800   | 1        |
| CIRCLIP-TYPE-C,14MM (Ref # 480)            | 480J1400    | 1        |
| CIRCLIP-TYPE-E,5MM (Ref # 482)             | 482J5000    | 4        |