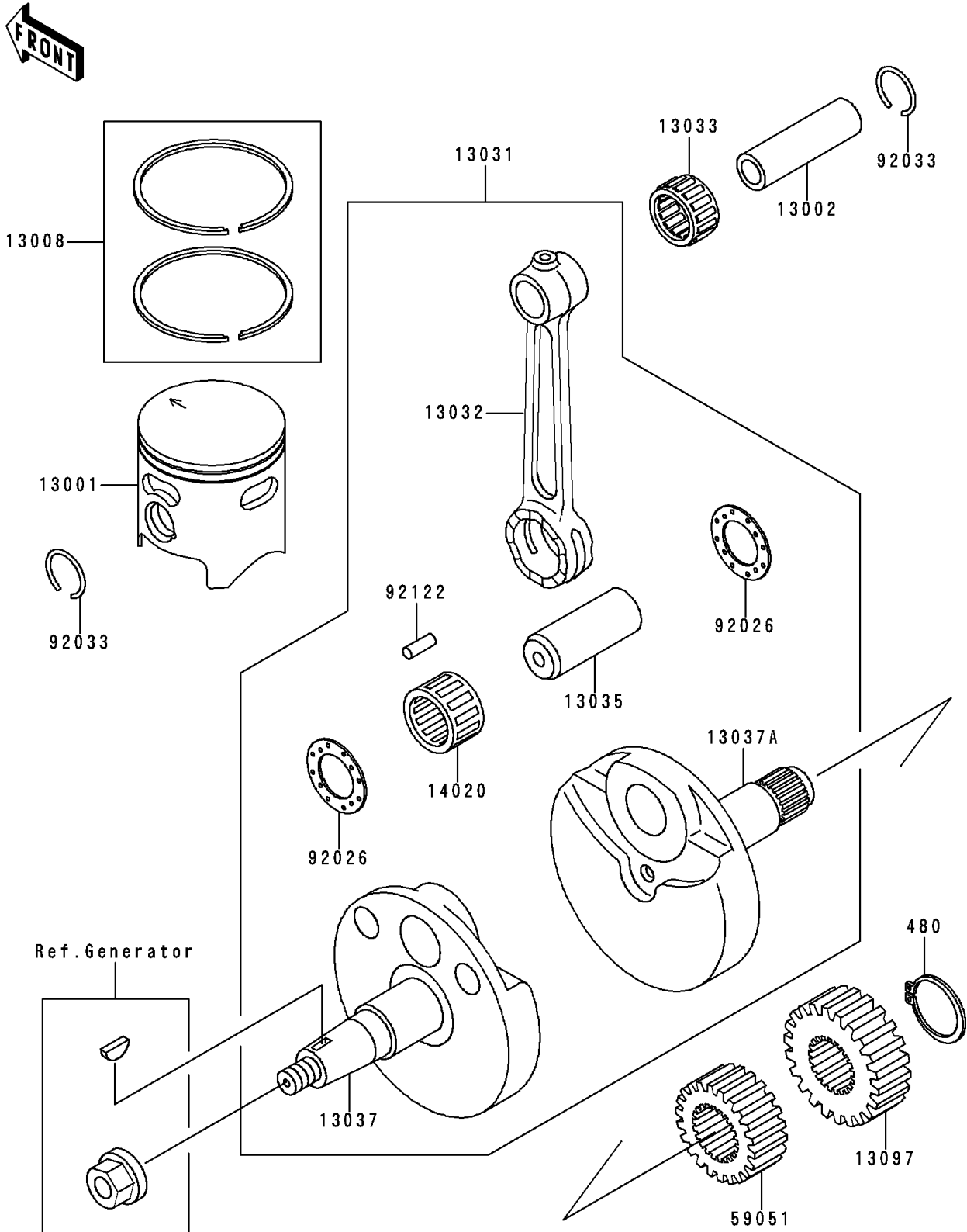


1996 KX80 PARTS DIAGRAM

Crankshaft/Piston(s)

E1320



1996 KX80 PARTS LIST

Crankshaft/Piston(s)

| ITEM NAME | PART NUMBER | QUANTITY |
|---|-------------|----------|
| CIRCLIP-TYPE-C,16MM (Ref # 480) | 480J1600 | 1 |
| PISTON-ENGINE (Ref # 13001) | 13001-1453 | 1 |
| PIN-PISTON (Ref # 13002) | 13002-1079 | 1 |
| RING-SET-PISTON (Ref # 13008) | 13008-1100 | 1 |
| CRANKSHAFT-COMP (Ref # 13031) | 13031-1313 | 1 |
| ROD-CONNECTING (Ref # 13032) | 13032-1039 | 1 |
| BEARING-SMALL END,14R1818AP-1 (Ref # 13033) | 13033-1053 | 1 |
| PIN-CRANK (Ref # 13035) | 13035-1054 | 1 |
| CRANKSHAFT,LH (Ref # 13037) | 13037-1396 | 1 |
| CRANKSHAFT,RH (Ref # 13037A) | 13037-1397 | 1 |
| GEAR-PRIMARY SPUR,20T (Ref # 13097) | 13097-1148 | 1 |
| RETAINER (Ref # 14020) | 14020-1076 | 1 |
| GEAR-SPUR,PUMP,22T (Ref # 59051) | 59051-1146 | 1 |
| SPACER,22.2X37X1.0 (Ref # 92026) | 92026-1136 | 2 |
| RING-SNAP (Ref # 92033) | 92033-1050 | 2 |
| ROLLER (Ref # 92122) | 92122-1177 | 16 |