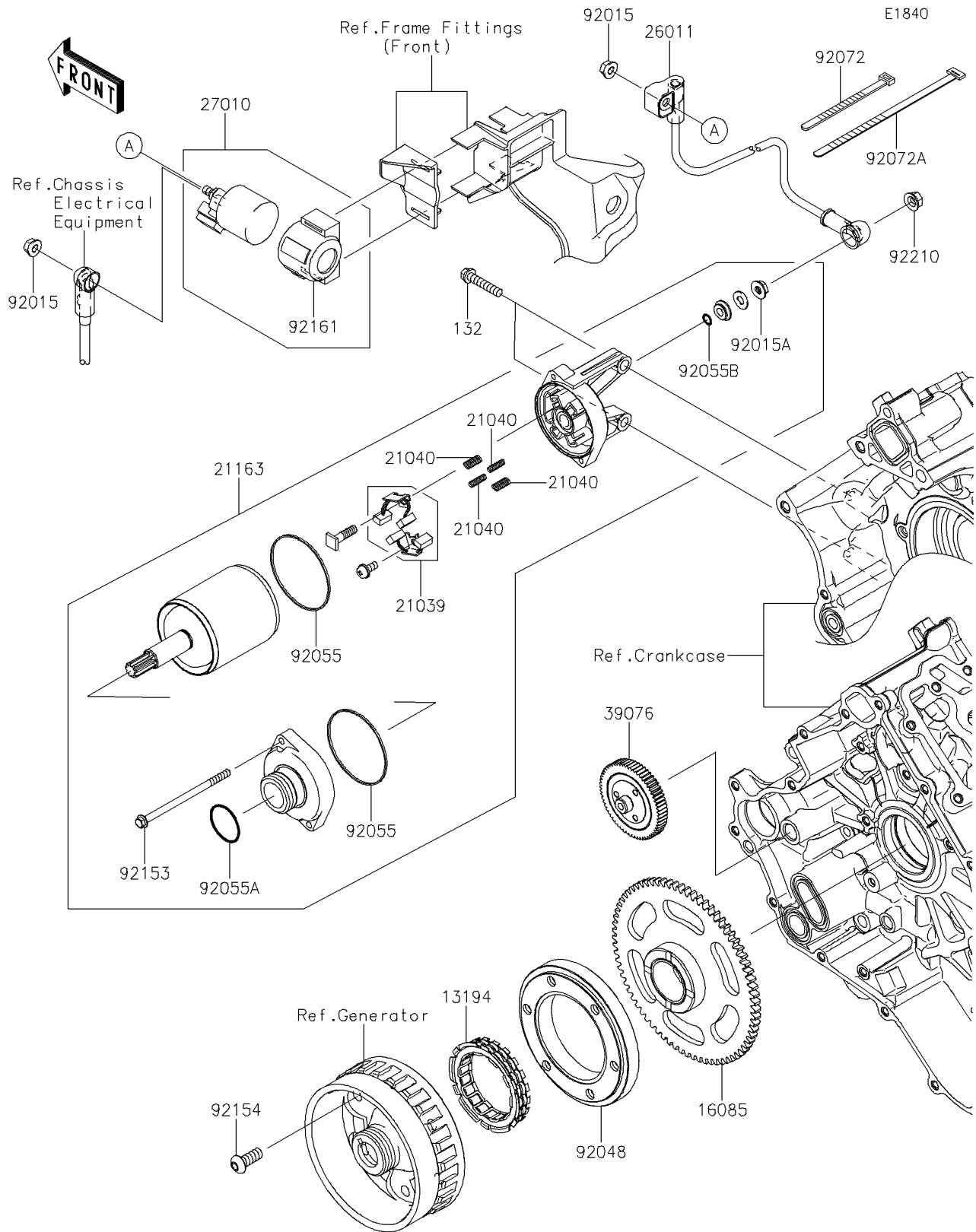


# 2016 TERYX® CAMO PARTS DIAGRAM

## Starter Motor



## 2016 TERYX® CAMO PARTS LIST

### Starter Motor

| ITEM NAME                            | PART NUMBER | QUANTITY |
|--------------------------------------|-------------|----------|
| CLUTCH-ONEWAY (Ref # 13194)          | 13194-1094  | 1        |
| GEAR,STARTER (Ref # 16085)           | 16085-0591  | 1        |
| BRUSH,CARBON (Ref # 21039)           | 21039-0004  | 1        |
| SPRING-BRUSH (Ref # 21040)           | 21040-0003  | 4        |
| STARTER-ELECTRIC (Ref # 21163)       | 21163-0037  | 1        |
| WIRE-LEAD (Ref # 26011)              | 26011-0901  | 1        |
| SWITCH,MAGNETIC (Ref # 27010)        | 27010-0766  | 1        |
| LIMITER,STARTER (Ref # 39076)        | 39076-0555  | 1        |
| NUT,FLANGED,6MM (Ref # 92015)        | 92015-1367  | 2        |
| NUT,STARTER MOTOR (Ref # 92015A)     | 92015-1476  | 1        |
| RACE,ONEWAY CLUTCH (Ref # 92048)     | 92048-0553  | 1        |
| RING-O (Ref # 92055)                 | 92055-0136  | 2        |
| RING-O (Ref # 92055A)                | 92055-1276  | 1        |
| RING-O,4.5X2.0 (Ref # 92055B)        | 92055-1370  | 1        |
| BAND,L=123 (Ref # 92072)             | 92072-030   | 1        |
| BAND,L=186 (Ref # 92072A)            | 92072-056   | 1        |
| BOLT (Ref # 92153)                   | 92153-1850  | 2        |
| BOLT,TORX,8X20 (Ref # 92154)         | 92154-0421  | 6        |
| DAMPER,MAGNETIC SWITCH (Ref # 92161) | 92161-1722  | 1        |
| NUT,6MM (Ref # 92210)                | 92210-0188  | 1        |
| BOLT-FLANGED-SMALL,6X30 (Ref # 132)  | 132BA0630   | 2        |