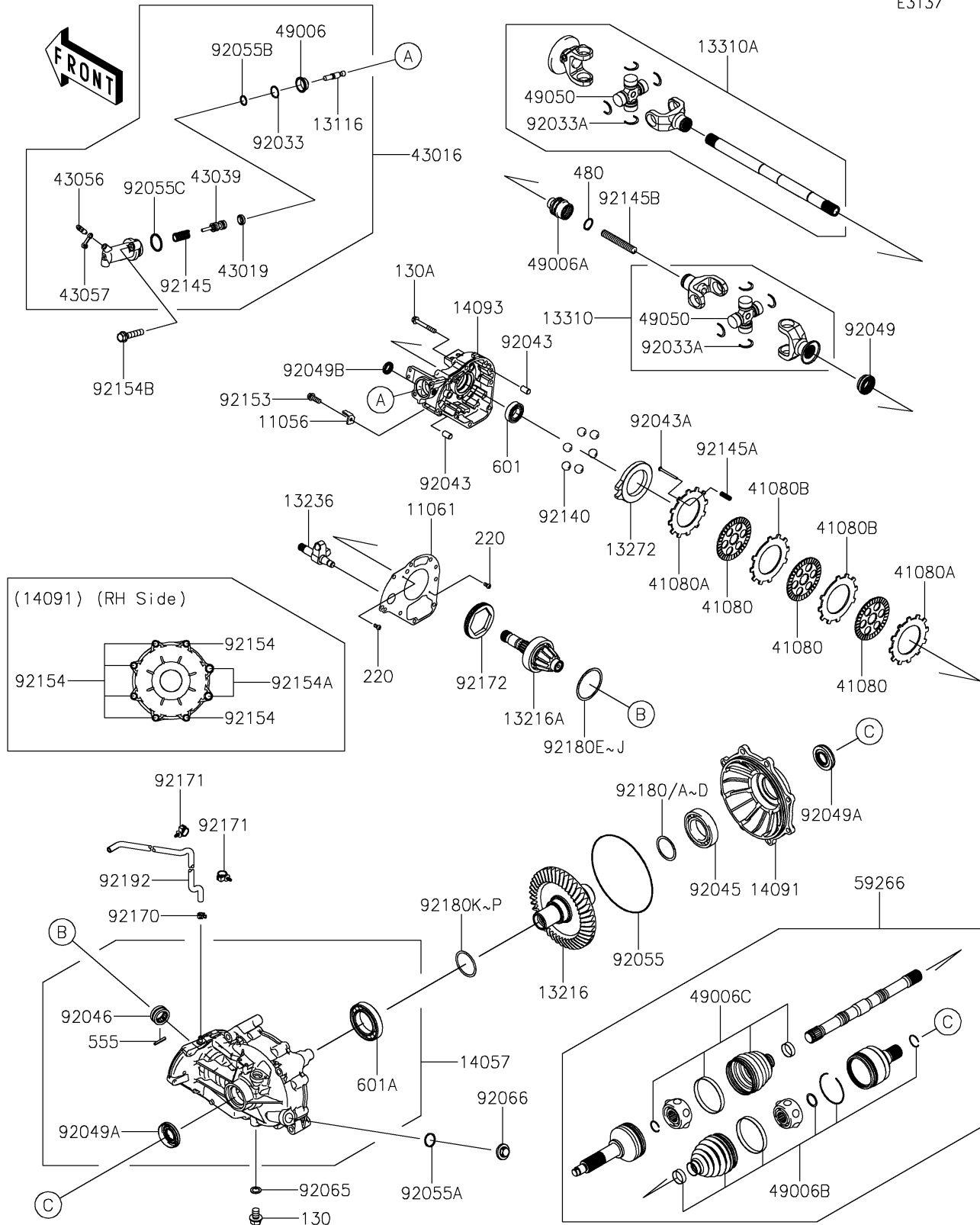


# 2018 TERYX® CAMO PARTS DIAGRAM

Drive Shaft-Rear

E3137



## 2018 TERYX® CAMO PARTS LIST

### Drive Shaft-Rear

ITEM NAME	PART NUMBER	QUANTITY
BRACKET (Ref # 11056)	11056-1447	1
GASKET,FR COVER (Ref # 11061)	11061-0270	1
ROD-PUSH (Ref # 13116)	13116-0026	1
GEAR-COMP,RING GEAR,44T (Ref # 13216)	13216-0885	1
GEAR-COMP,PINION,10T (Ref # 13216A)	13216-0886	1
LEVER-COMP,BRAKE (Ref # 13236)	13236-0706	1
PLATE,CAM (Ref # 13272)	13272-1203	1
SHAFT-ASSY,GEAR-ASSY SIDE (Ref # 13310)	13310-0034	1
SHAFT-ASSY,ENGINE SIDE (Ref # 13310A)	13310-0043	1
CASE-COMP-GEAR (Ref # 14057)	14057-0019	1
COVER,RH (Ref # 14091)	14091-0677	1
COVER,FR (Ref # 14093)	14093-0428	1
DISC,FRICTION (Ref # 41080)	41080-1482	3
DISC,PRESSURE (Ref # 41080A)	41080-1483	2
DISC,SEPARATER (Ref # 41080B)	41080-1484	2
CYLINDER-MASTER (Ref # 43016)	43016-0556	1
CUP-BRAKE (Ref # 43019)	43019-0002	1
PISTON-BRAKE (Ref # 43039)	43039-0006	1
BREATHER-BRAKE (Ref # 43056)	43056-1056	1
CAP-BREATHER (Ref # 43057)	43057-1001	1
BOOT (Ref # 49006)	49006-0072	1
BOOT,GEAR ASSY SIDE (Ref # 49006A)	49006-0108	1
BOOT,INSIDE (Ref # 49006B)	49006-0596	2
BOOT,OUTSIDE (Ref # 49006C)	49006-0597	2
SPIDER (Ref # 49050)	49050-0027	2
JOINT-BALL,RR,CVJ (Ref # 59266)	59266-0715	2
RING-SNAP (Ref # 92033)	92033-0055	1
RING-SNAP (Ref # 92033A)	92033-0735	8
PIN,8X14 (Ref # 92043)	92043-1567	2

## 2018 TERYX® CAMO PARTS LIST

### Drive Shaft-Rear

ITEM NAME	PART NUMBER	QUANTITY
PIN,3X35 (Ref # 92043A)	92043-1617	2
BEARING-BALL,6210CM (Ref # 92045)	92045-1213	1
BEARING-NEEDLE,AH502802 (Ref # 92046)	92046-0024	1
SEAL-OIL,25X45X9.5 (Ref # 92049)	92049-0739	1
SEAL-OIL (Ref # 92049A)	92049-0773	2
SEAL-OIL,TC17X28X6 (Ref # 92049B)	92049-1537	1
RING-O,190.2X4.2 (Ref # 92055)	92055-0121	1
RING-O (Ref # 92055A)	92055-0122	1
RING-O (Ref # 92055B)	92055-0146	1
RING-O (Ref # 92055C)	92055-0147	1
GASKET,10.5X16X1 (Ref # 92065)	92065-058	1
PLUG (Ref # 92066)	92066-1303	1
BALL,D/O#12 (Ref # 92140)	92140-1064	6
SPRING (Ref # 92145)	92145-0882	1
SPRING,RR BRAKE (Ref # 92145A)	92145-1301	2
SPRING,PROPELLER SHAFT (Ref # 92145B)	92145-1304	1
BOLT,FLANGED-SMALL,6X16 (Ref # 92153)	92153-1729	1
BOLT,10X35 (Ref # 92154)	92154-1823	6
BOLT,12X35 (Ref # 92154A)	92154-1824	2
BOLT,FLANGED,8X40 (Ref # 92154B)	92154-1825	2
CLAMP (Ref # 92170)	92170-2043	1
CLAMP (Ref # 92171)	92171-0453	2
SCREW,SET,85X11.5 (Ref # 92172)	92172-1122	1
SHIM,T=0.95 (Ref # 92180)	92180-0813	AR
SHIM,T=1.10 (Ref # 92180A)	92180-0814	AR
SHIM,T=1.15 (Ref # 92180B)	92180-0815	AR
SHIM,T=1.30 (Ref # 92180C)	92180-0816	AR
SHIM,T=1.40 (Ref # 92180D)	92180-0817	AR
SHIM,70X80X0.15 (Ref # 92180E)	92180-0972	AR

## 2018 TERYX® CAMO PARTS LIST

### Drive Shaft-Rear

ITEM NAME	PART NUMBER	QUANTITY
SHIM,70X80X0.2 (Ref # 92180F)	92180-0973	AR
SHIM,70X80X0.5 (Ref # 92180G)	92180-0974	AR
SHIM,70X80X0.8 (Ref # 92180H)	92180-0975	AR
SHIM,70X80X1.0 (Ref # 92180I)	92180-0976	AR
SHIM,70X80X1.2 (Ref # 92180J)	92180-0977	AR
SHIM,55X64X0.15 (Ref # 92180K)	92180-1417	AR
SHIM,55X64X0.20 (Ref # 92180L)	92180-1418	AR
SHIM,55X64X0.50 (Ref # 92180M)	92180-1419	AR
SHIM,55X64X0.80 (Ref # 92180N)	92180-1420	AR
SHIM,55X64X1.00 (Ref # 92180O)	92180-1421	AR
SHIM,55X64X1.20 (Ref # 92180P)	92180-1422	AR
TUBE,BREATHER (Ref # 92192)	92192-1473	1
BOLT-FLANGED,10X14 (Ref # 130)	130BA1014	1
BOLT-FLANGED,8X60 (Ref # 130A)	130CA0860	8
SCREW-PAN-CROS,4X8 (Ref # 220)	220AA0408	2
CIRCLIP-TYPE-C,25MM (Ref # 480)	480J2500	1
PIN-SPRING (Ref # 555)	555A0428	1
BEARING-BALL (Ref # 601)	601A6005	1
BEARING-BALL (Ref # 601A)	601A6011	1