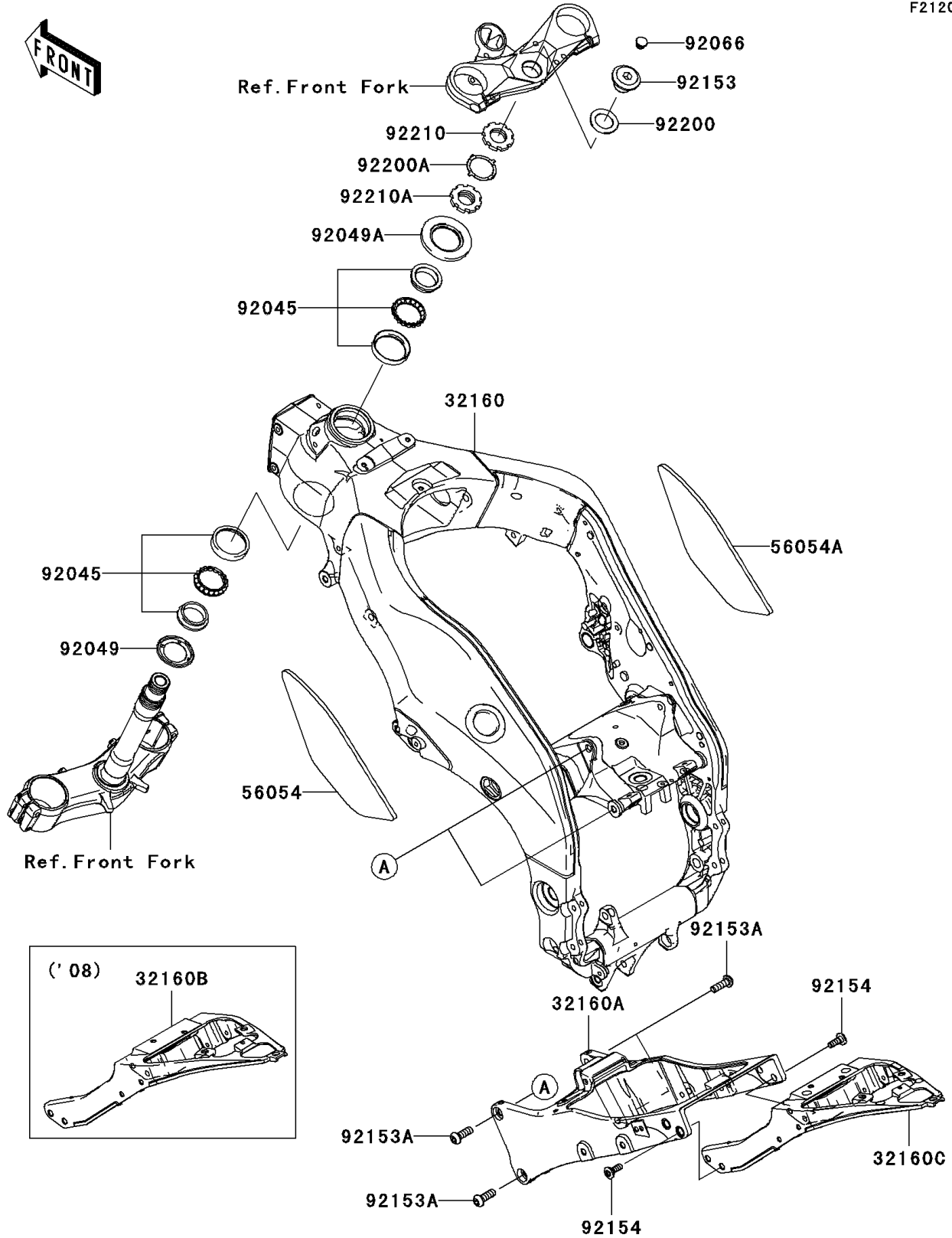


2008 Ninja® ZX™-10R PARTS DIAGRAM

Frame

F2120



2008 Ninja® ZX™ -10R PARTS LIST

Frame

| ITEM NAME | PART NUMBER | QUANTITY |
|---|----------------|----------|
| FRAME-COMP,FR,F.S.BLACK (Ref # 32160) | 32160-0254-18R | 1 |
| FRAME-COMP,RR,FR,F.S.BLACK (Ref # 32160A) | 32160-0255-18R | 1 |
| FRAME-COMP,RR,RR (Ref # 32160B) | 32160-0347 | 1 |
| MARK,FRAME,LH (Ref # 56054) | 56054-0238 | 1 |
| MARK,FRAME,RH (Ref # 56054A) | 56054-0239 | 1 |
| BEARING-BALL,SF07A17PX1V1 (Ref # 92045) | 92045-1384 | 2 |
| SEAL-OIL,DS35X55X4 (Ref # 92049) | 92049-0022 | 1 |
| SEAL-OIL,XMH 43 75 6.4J (Ref # 92049A) | 92049-1382 | 1 |
| PLUG (Ref # 92066) | 92066-0071 | 1 |
| BOLT,26MM (Ref # 92153) | 92153-0474 | 1 |
| BOLT,SOCKET,10X30 (Ref # 92153A) | 92153-1933 | 4 |
| BOLT,SOCKET,8X23 (Ref # 92154) | 92154-0077 | 4 |
| WASHER,27X42X2.3 (Ref # 92200) | 92200-0081 | 1 |
| WASHER (Ref # 92200A) | 92200-0281 | 1 |
| NUT,35MM (Ref # 92210) | 92210-0095 | 1 |
| NUT,35MM (Ref # 92210A) | 92210-0096 | 1 |