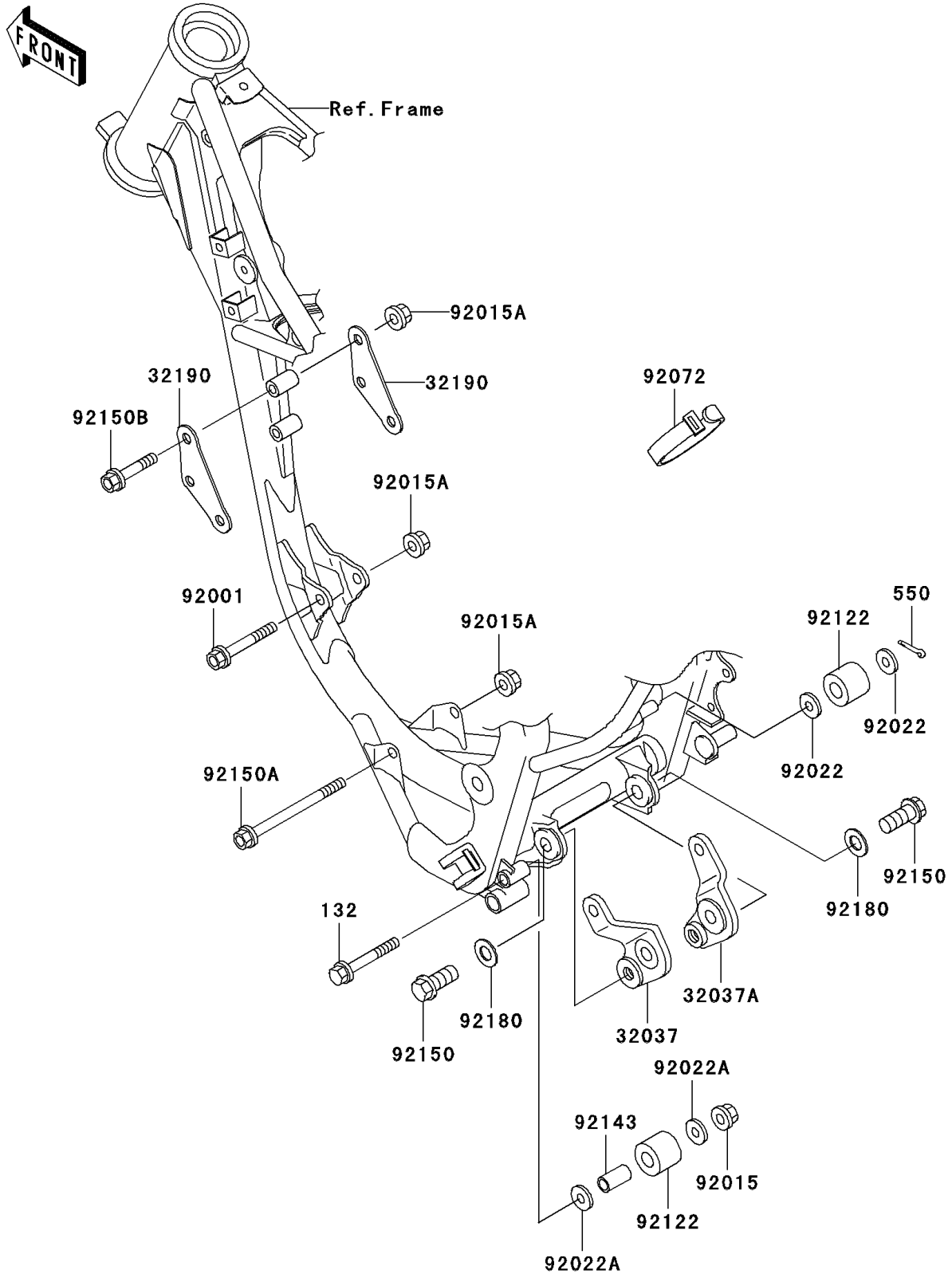


# 2001 KX85 PARTS DIAGRAM

Engine Mount

F2122



## 2001 KX85 PARTS LIST

### Engine Mount

| ITEM NAME                            | PART NUMBER | QUANTITY |
|--------------------------------------|-------------|----------|
| BOLT-FLANGED-SMALL (Ref # 132)       | 132G0860    | 1        |
| PIN-COTTER,2.5X18 (Ref # 550)        | 550D2518    | 1        |
| BRACKET-SHOCKABSORBER (Ref # 32037)  | 32037-1552  | 1        |
| BRACKET-SHOCKABSORBER (Ref # 32037A) | 32037-1553  | 1        |
| BRACKET-ENGINE,HEAD (Ref # 32190)    | 32190-1119  | 2        |
| BOLT,FLANGED,8X63 (Ref # 92001)      | 92001-1006  | 1        |
| NUT,8MM (Ref # 92015)                | 92015-1143  | 1        |
| NUT,8MM (Ref # 92015A)               | 92015-1432  | 5        |
| WASHER (Ref # 92022)                 | 92022-107   | 2        |
| WASHER,8.5X20X1.6 (Ref # 92022A)     | 92022-1561  | 2        |
| BAND,L=140 (Ref # 92072)             | 92072-1293  | 3        |
| ROLLER,CHAIN GUIDE (Ref # 92122)     | 92122-1213  | 2        |
| COLLAR,9.5X12.7X25 (Ref # 92143)     | 92143-1432  | 1        |
| BOLT,FLANGED,12X27 (Ref # 92150)     | 92150-1359  | 2        |
| BOLT,FLANGED,8X105 (Ref # 92150A)    | 92150-1482  | 1        |
| BOLT,FLANGED,8X45 (Ref # 92150B)     | 92150-1487  | 3        |
| SHIM,12.5X24X0.5 (Ref # 92180)       | 92180-1060  | 2        |