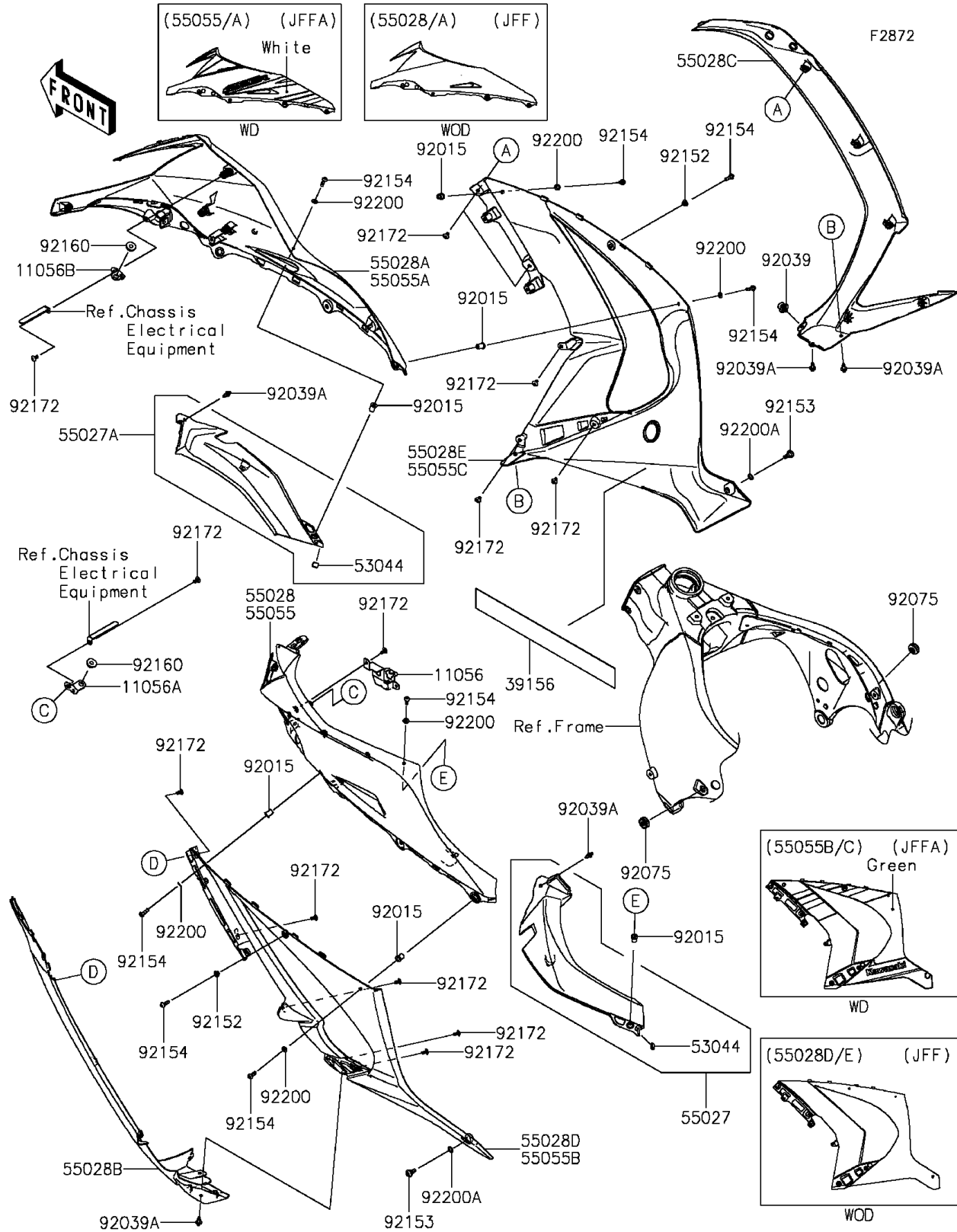


2015 Ninja® ZX™ -10R 30th Anniversary Edition PARTS DIAGRAM

Cowling Lower



2015 Ninja® ZX™ -10R 30th Anniversary Edition PARTS LIST

Cowling Lowers

| ITEM NAME | PART NUMBER | QUANTITY |
|--|----------------|----------|
| BRACKET,FUSE BOX (Ref # 11056) | 11056-0457 | 1 |
| BRACKET (Ref # 11056A) | 11056-0709 | 1 |
| BRACKET (Ref # 11056B) | 11056-0710 | 1 |
| PAD,49X400X0.3 (Ref # 39156) | 39156-0753 | 1 |
| TRIM (Ref # 53044) | 53044-0552 | 2 |
| COWLING-ASSY,INNER,LH,F.BLACK (Ref # 55027) | 55027-0060-6Z | 1 |
| COWLING-ASSY,INNER,RH,F.BLACK (Ref # 55027A) | 55027-0061-6Z | 1 |
| COWLING,SIDE,FR,LH,F.BLACK (Ref # 55028B) | 55028-0336-6Z | 1 |
| COWLING,SIDE,FR,RH,F.BLACK (Ref # 55028C) | 55028-0337-6Z | 1 |
| COWLING,SIDE,UPP,LH,P.S.WHITE (Ref # 55055) | 55055-5490-25Y | 1 |
| COWLING,SIDE,UPP,RH,P.S.WHITE (Ref # 55055A) | 55055-5491-25Y | 1 |
| COWLING,SIDE,LH,GREEN (Ref # 55055B) | 55055-5492-777 | 1 |
| COWLING,SIDE,RH,GREEN (Ref # 55055C) | 55055-5493-777 | 1 |
| NUT,WELL,5MM (Ref # 92015) | 92015-1757 | 6 |
| RIVET,HOLE 8MM (Ref # 92039) | 92039-0014 | 1 |
| RIVET (Ref # 92039A) | 92039-0068 | 5 |
| DAMPER (Ref # 92075) | 92075-1067 | 2 |
| COLLAR,5.3X7.3X5.3 (Ref # 92152) | 92152-0912 | 2 |
| BOLT,SOCKET,6MM (Ref # 92153) | 92153-0489 | 2 |
| BOLT,SOCKET,5X16 (Ref # 92154) | 92154-0209 | 8 |
| DAMPER (Ref # 92160) | 92160-1613 | 2 |
| SCREW,TAPPING,5X10 (Ref # 92172) | 92172-0262 | 13 |
| WASHER,NYLON,5.3X11.5X0.5 (Ref # 92200) | 92200-0006 | 6 |
| WASHER,10.4X15.9X0.5 (Ref # 92200A) | 92200-0157 | 2 |