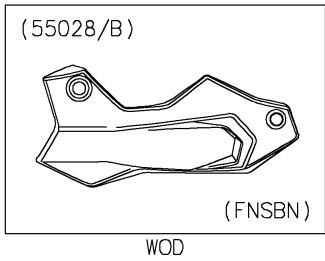
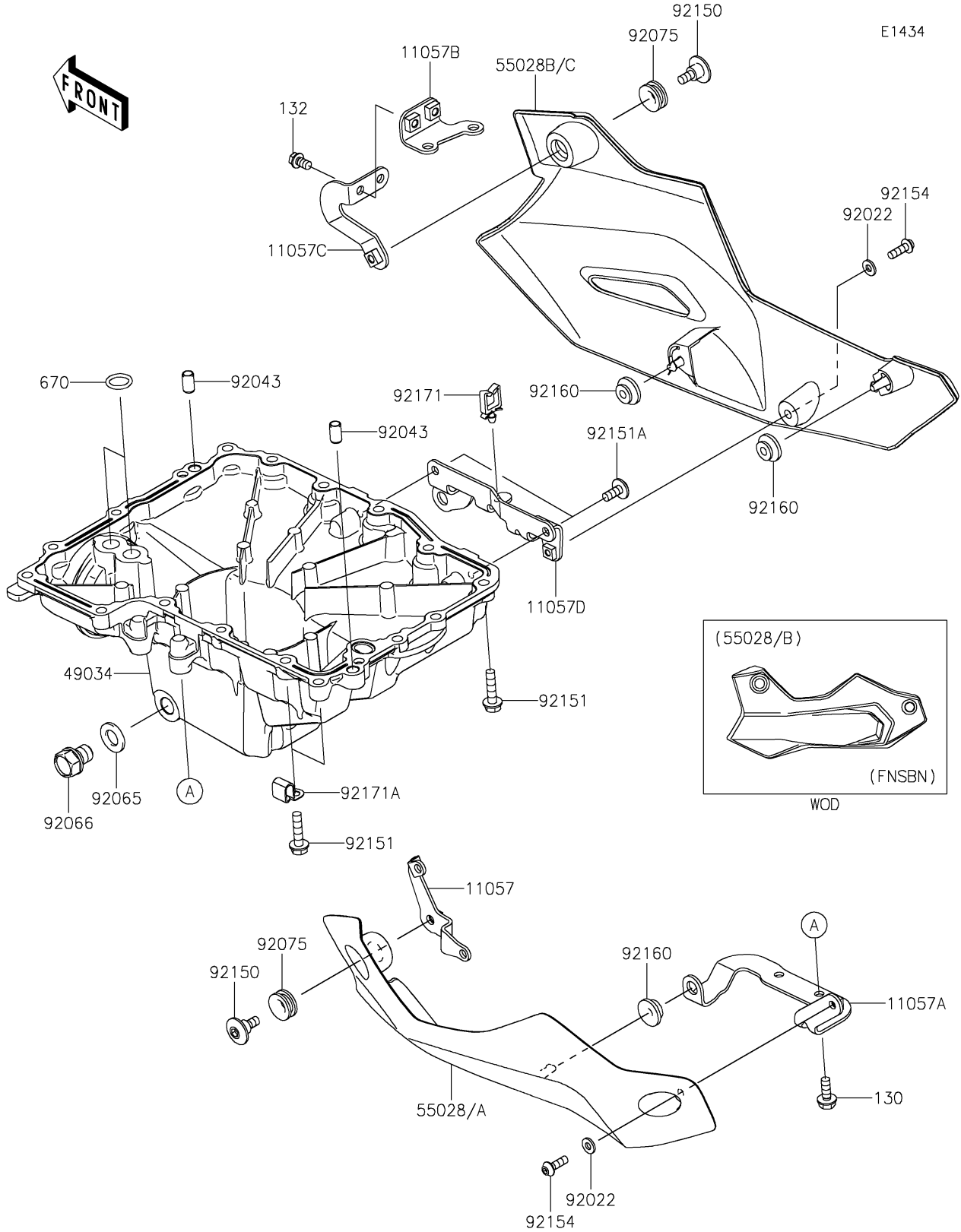


2022 Z900 PARTS DIAGRAM

Oil Pan



2022 Z900 PARTS LIST

Oil Pan

ITEM NAME	PART NUMBER	QUANTITY
BRACKET,FR,LH (Ref # 11057)	11057-2705	1
BRACKET,OIL PAN,LH (Ref # 11057A)	11057-2706	1
BRACKET,CRANKCASE (Ref # 11057B)	11057-2707	1
BRACKET,FR,RH (Ref # 11057C)	11057-2708	1
BRACKET,OIL PAN,RH (Ref # 11057D)	11057-2709	1
PAN-OIL (Ref # 49034)	49034-0578	1
COWLING,LWR,LH,M.S.BLACK (Ref # 55028)	55028-0708-660	1
COWLING,LWR,LH,EBONY (Ref # 55028A)	55028-0708-H8	1
COWLING,LWR,RH,M.S.BLACK (Ref # 55028B)	55028-0709-660	1
COWLING,LWR,RH,EBONY (Ref # 55028C)	55028-0709-H8	1
WASHER,NYLON,5.3X11.5X1.5 (Ref # 92022)	92022-1521	2
PIN,6.2X8X14 (Ref # 92043)	92043-1263	2
GASKET,12X22X2 (Ref # 92065)	92065-097	1
PLUG,12X15 (Ref # 92066)	92066-0079	1
DAMPER (Ref # 92075)	92075-1634	2
BOLT,SOCKET,6MM (Ref # 92150)	92150-1154	2
BOLT,FLANGED,6X25 (Ref # 92151)	92151-1225	18
BOLT,SOCKET,6X14 (Ref # 92151A)	92151-1654	2
BOLT,SOCKET,5X16 (Ref # 92154)	92154-0287	2
DAMPER (Ref # 92160)	92160-1613	3
CLAMP (Ref # 92171)	92171-0290	1
CLAMP (Ref # 92171A)	92171-0534	2
BOLT-FLANGED,6X16 (Ref # 130)	130CC0616	2
BOLT-FLANGED-SMALL (Ref # 132)	132BC0610	2
O RING,14MM (Ref # 670)	670D2014	2