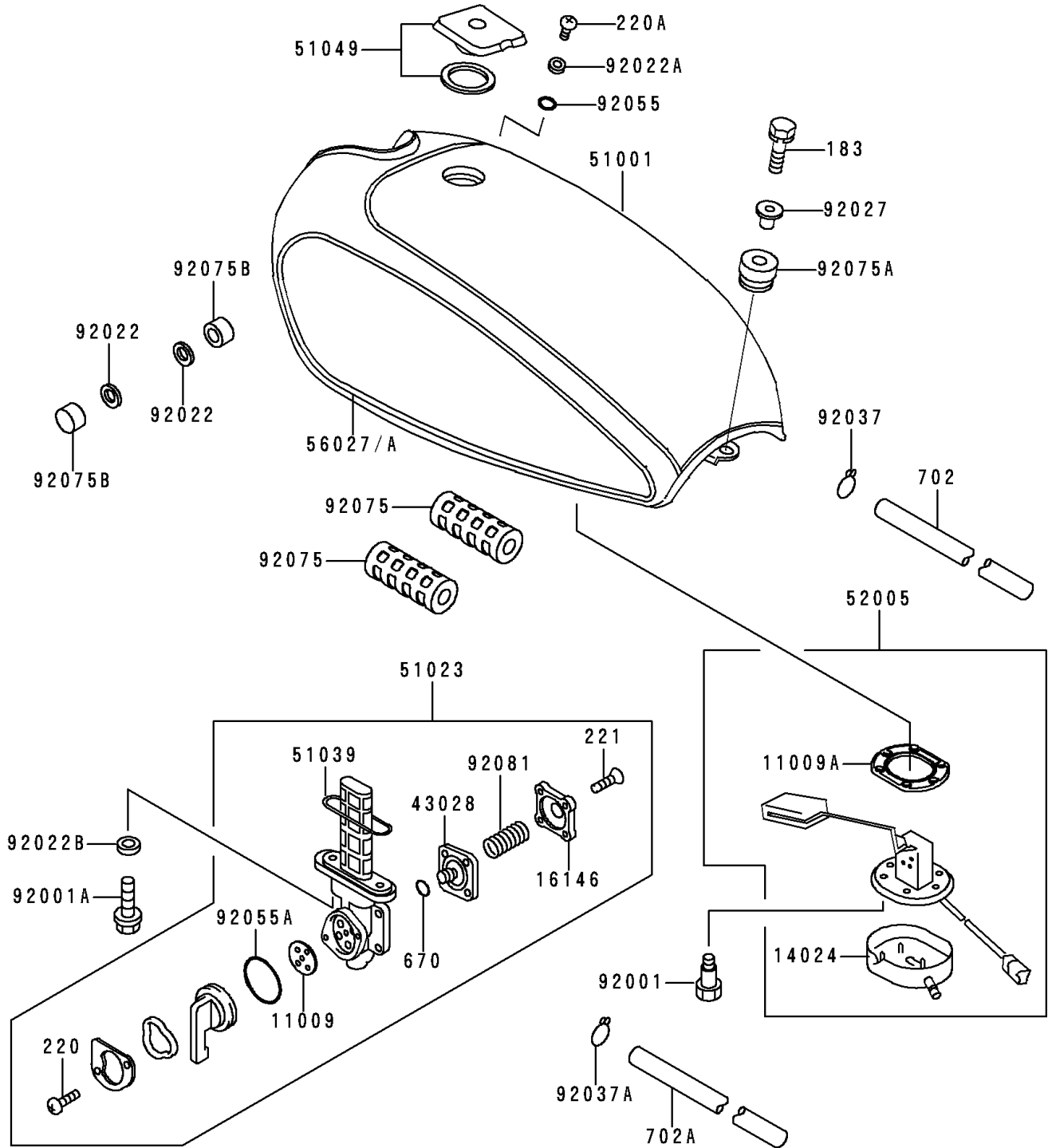


2000 Police 1000 PARTS DIAGRAM

Fuel Tank

F2410



2000 Police 1000 PARTS LIST

Fuel Tank

| ITEM NAME | PART NUMBER | QUANTITY |
|--|---------------|----------|
| BOLT-UPSET-WS-SMALL (Ref # 183) | 183B0830 | 1 |
| SCREW-PAN-CROS (Ref # 220) | 220B0308 | 2 |
| SCREW-PAN-CROS (Ref # 220A) | 220B0510 | 2 |
| SCREW-CSK-CROS,4X14 (Ref # 221) | 221B0414 | 4 |
| O RING,4MM (Ref # 670) | 670B1504 | 1 |
| TUBE-RUBBER,5X800 (Ref # 702) | 702A05800 | 1 |
| TUBE-RUBBER,7X10X780 (Ref # 702A) | 702A07780 | 1 |
| GASKET,TAP VALVE (Ref # 11009) | 11009-1194 | 1 |
| GASKET,FUEL GAUGE (Ref # 11009A) | 11009-1826 | 1 |
| COVER,FUEL GAUGE (Ref # 14024) | 14024-1434 | 1 |
| COVER-ASSY,TAP DIAPHRAGM (Ref # 16146) | 16146-1005 | 1 |
| DIAPHRAGM,TAP (Ref # 43028) | 43028-1015 | 1 |
| TANK-COMP-FUEL,J.WHITE (Ref # 51001) | 51001-1432-8C | 1 |
| TAP-ASSY,FUEL (Ref # 51023) | 51023-1039 | 1 |
| RING,TAP FLANGED (Ref # 51039) | 51039-010 | 1 |
| CAP-TANK,FUEL (Ref # 51049) | 51049-1084 | 1 |
| GAUGE,FUEL (Ref # 52005) | 52005-1132 | 1 |
| PATTERN (Ref # 56027) | 56027-4072 | 1 |
| PATTERN (Ref # 56027A) | 56027-4073 | 1 |
| BOLT,FUEL GAUGE (Ref # 92001) | 92001-1069 | 6 |
| BOLT,6X20 (Ref # 92001A) | 92001-1091 | 2 |
| WASHER,10.5X26X2.3 (Ref # 92022) | 92022-044 | 2 |
| WASHER,6.2X11X1.5 (Ref # 92022A) | 92022-183 | 2 |
| WASHER,5.1X10X1.0 (Ref # 92022B) | 92022-1977 | 2 |
| COLLAR,L=14 (Ref # 92027) | 92027-1134 | 1 |
| CLAMP,TUBE (Ref # 92037) | 92037-1461 | 1 |
| CLAMP,TUBE (Ref # 92037A) | 92037-147 | 1 |
| RING-O (Ref # 92055) | 92055-1023 | 2 |
| RING-O,TAP LEVER (Ref # 92055A) | 92055-1027 | 1 |

2000 Police 1000 PARTS LIST

Fuel Tank

| ITEM NAME | PART NUMBER | QUANTITY |
|------------------------------------|-------------|----------|
| DAMPER,FUEL TANK (Ref # 92075) | 92075-084 | 2 |
| DAMPER,FUEL TANK (Ref # 92075A) | 92075-1116 | 1 |
| DAMPER,FUEL TANK (Ref # 92075B) | 92075-125 | 2 |
| SPRING,TAP DIAPHRAGM (Ref # 92081) | 92081-1171 | 1 |